

Annual Statistical Report 2017

SUMMARY OF KEY STATISTICS	2017	2016	2015	2014	2013
Number of Days Per Year	253	254	254	254	254
Turnover	€m	€m	€m	€m	€m
Equities - Main Securities Market (MSM)	87,257	86,684	79,727	61,384	56,553
Equities - Main Securities Market (MSM) (Grey Market Trading)	9,470	0	0.1	0	134
Equities - Enterprise Securities Market (ESM)	1,603	2,786	4,411	2,094	888
ETFs - ISEQ 20® ETF	12	9	23	20	29
Total Equities and ETFs	98,342	89,478	84,161	63,499	57,604
Average Equities and ETFs	389	352	331	250	227
Irish Government Bonds	166,696	201,378	240,582	249,177	92,218
Irish Government Bonds (Grey Market Trading)	0	0	0	0	15,016
Treasury Bills	4,885	3,803	4,536	7,570	3,444
Total Irish Government Securities	171,581	205,181	245,118	256,747	110,678
Daily Average Irish Government Securities	678	808	965	1,011	436
Trade Figures					
Equities - MSM	6,375,428	6,331,210	5,355,138	4,219,249	3,292,752
Equities - MSM (Grey Market Trading)	51,320	0	2	0	890
Equities - ESM	130,648	249,762	250,384	234,536	136,662
ETFs - ISEQ 20® ETF	700	912	906	1,132	872
Total Equities and ETFs	6,558,096	6,581,884	5,606,430	4,454,917	3,431,176
Average Equities and ETFs	25,921	25,913	22,073	17,539	13,509
Irish Government Bonds	47,051	53,220	66,224	59,542	33,831
Irish Government Bonds (Grey Market Trading)	0	0	0	0	624
Treasury Bills	358	255	332	410	325
Total Irish Government Securities	47,409	53,475	66,556	59,952	34,780
Daily Average Irish Government Securities	187	211	262	236	137
Money Raised (Domestic) (See Note 1)	€m	€m	€m	€m	€m
Equities - MSM	1,263	255	701	910	1,401
Equities - ESM	476	258	2,423	370	116
Total Equities	1,739	513	3,124	1,281	1,517
Number of Companies Raising Funds	10	11	13	15	14
Irish Government Bonds	16,697	8,350	13,000	11,750	7,736
Treasury Bills	2,000	2,000	1,500	2,500	4,000
Total Irish Government Securities	18,697	10,350	14,500	14,250	11,736
Market Capitalisation	€m	€m	€m	€m	€m
Equities - MSM (Included in ISEQ®)	121,835	100,199	98,942	77,395	65,863
Equities - ESM (Included in ISEQ®)	5,000	18,127	23,303	47,269	63,088
Total Equities (Included in ISEQ®)	126,835	118,326	122,245	124,663	128,951
ETFs - ISEQ 20® ETF	20	28	32	24	26
Irish Government Bonds	125,816	119,125	119,443	110,304	95,162
ISEQ® Equity Overall Index					
ISEQ® Overall Index	7,038.28	6,517.24	6,791.68	5,224.56	4,539.43
% Change (on year)	8%	-4%	30%	15%	34%
ISEQ® Overall Total Return Index	15,033.83	13,730.86	14,108.36	10,559.35	9,038.52
% Change (on year)	9%	-3%	34%	17%	36%
ISEQ® All Bond Index					
ISEQ® All Bond Index	115.82	118.82	118.682	120.71	110.17
% Change (on year)	-3%	0%	-2%	10%	6%
ISEQ® All Bond Total Return Index	204.13	202.71	195.867	192.156	170.47
% Change (on year)	1%	3%	2%	13%	10%
Member Firms					
Number of Member Firms (of which International)	48(39)	47(38)	47(38)	47(38)	47(38)
Number Of Companies (Domestic & Foreign)					
MSM (See Note 2)	29	26	26	26	25
ESM	22	25	27	26	25
Total	51	51	53	52	50
Investment Funds					
Funds (Including Umbrella Funds)	396	503	600	676	803
Subfunds	1,014	1,211	1,451	1,509	1,549
Total	1,410	1,714	2,051	2,185	2,352
ETFs (See Note 3)	244	215	185	114	
Fund Classes (See Note 3)	5,066	5,765	6,938	7,253	7,130
Total Fund Classes	5,310	5,980	7,123	7,367	7,130
Debt					
Programmes (See Note 4)	552	525	714	699	666
Non Programmes	3,138	3,226	3,147	3,049	2,825
Total	3,690	3,976	3,861	3,748	3,491
Debt Tranches (See Note 5)	31,426	29,057	27,124	25,047	21,719

Note 1 : The equity money raised statistics were re-stated in Q3 2013. The statistics published above reflect this change

Note 2 : There are an additional 4 preference share securities listed on the MSM to companies which also have their shares traded on the ISE.

Note 3 : Pre 2014 fund class totals include both fund classes and ETFs.

Note 4 : The method for calculating debt programme issuers was revised with effect from January 2017 and now includes all programme issuers (i) with securities listed or (ii) currently approved to list. Comparatives for 2016 have been adjusted to reflect this change

Note 5 : Debt tranches also includes Irish Government bonds and treasury bills.

Annual Statistical Report 2017

ENTRANTS AND DEPARTURES

Entrants to the Market

	2017	2016	2015	2014	2013
Companies	3	2	4	3	5

Entrants to Equity Markets

Greencoat Renewables plc			25-Jul-17		
Cairn Homes plc			26-Jul-17		
Glencave Properties plc			13-Oct-17		

Investment Funds

Total (Funds & Subfunds)	109	121	167	183	183
ETFs (See Note 1)	57	46	79		
Fund Classes (See Note 1)	860	995	1,326	1,662	1,747
Total Fund Classes	917	1,041	1,405	1,662	1,747

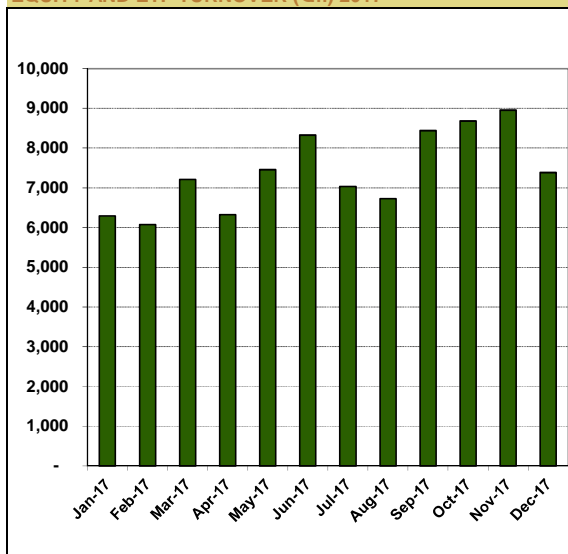
Debt

Programmes (See Note 2)	102	78	74	97	139
Non Programmes	419	401	477	508	445
Total	521	479	551	605	584
Tranches	10,360	6,777	7,219	7,013	4,562

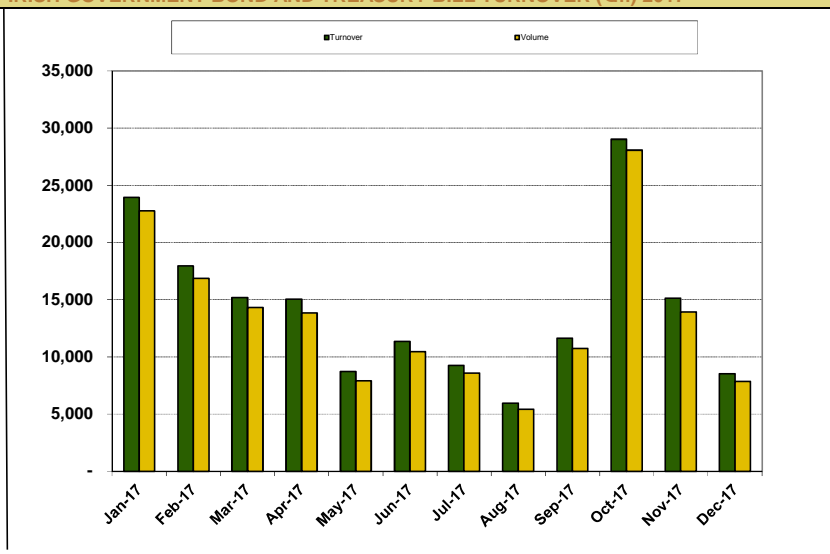
Departures from Equity Markets

Fyffes plc			20-Feb-17		
Karelian Diamond Resources plc			06-Nov-17		
Conroy Gold and Natural Resources plc			06-Nov-17		

EQUITY AND ETF TURNOVER (€m) 2017



IRISH GOVERNMENT BOND AND TREASURY BILL TURNOVER (€m) 2017



EQUITY TURNOVER (€m)

	Main Securities Market	Enterprise Securities Market	Exchange Traded Funds
January	5,927.24	359.03	0.42
February	5,976.99	92.85	1.26
March	7,105.64	98.55	3.11
April	6,203.58	115.39	0.37
May	7,319.65	136.90	1.69
June	8,228.60	100.50	0.17
July	6,929.19	95.80	1.11
August	6,659.82	66.13	0.52
September	8,290.55	143.50	0.52
October	8,533.81	139.49	3.01
November	8,810.76	142.31	0.07
December	7,271.03	112.93	0.15

BOND TURNOVER (€m)

	Irish Government Bonds	Irish Treasury Bills
January	23,839.76	77.31
February	17,865.76	90.80
March	14,110.98	1,057.63
April	14,882.12	141.56
May	8,643.19	63.42
June	10,470.93	861.83
July	8,969.95	280.99
August	5,588.23	352.55
September	10,857.19	763.58
October	28,920.81	112.26
November	14,950.28	157.66
December	7,597.05	925.08

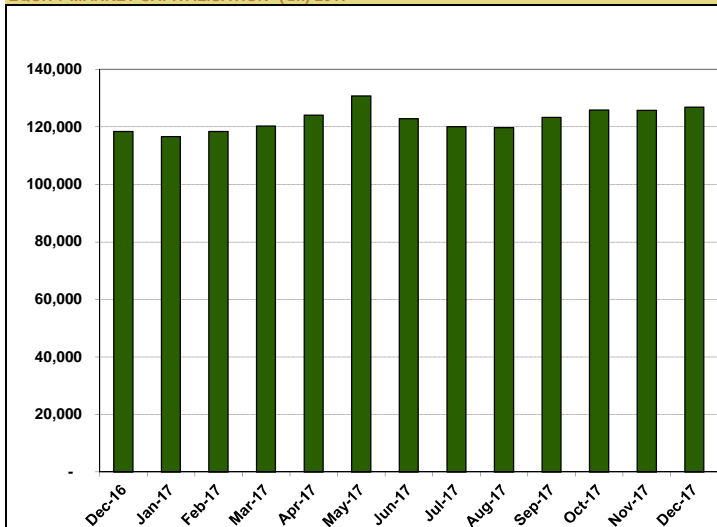
Total	87,256.86	1,603.40	12.40	Total	166,696.25	4,884.66
Daily Average	344.89	6.34	0.05	Daily Average	658.88	19.31

Note 1 : Pre 2016 fund class totals include both fund classes and ETFs.

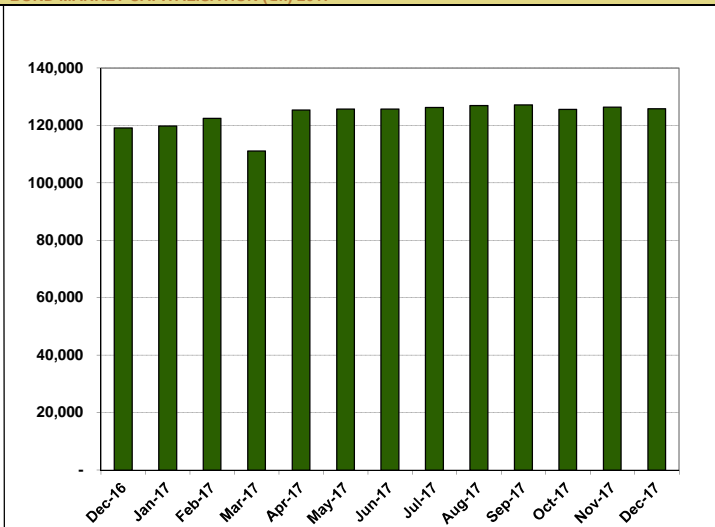
Note 2 : The method for calculating debt programme issuers was revised with effect from January 2017 and now includes all programme issuers (i) with securities listed or (ii) currently approved to list.

Annual Statistical Report 2017

EQUITY MARKET CAPITALISATION* (€m) 2017



BOND MARKET CAPITALISATION (€m) 2017



*Irish, Northern Irish and additional companies having their centre of economic interest in Ireland, included in the ISEQ Index.

ISEQ® EQUITY INDICES 2017

Month End	Overall Mkt. Cap.* €m	ISEQ® Overall	ISEQ® Financial	ISEQ® General	ISEQ® Small Cap	ISEQ® ESM	ISEQ® 20	ISEQ® 20 Capped	ISEQ® 20 Leveraged
30-Dec-16	118,326	6,517	306	9,265	2,369	2,199	1,059	1,371	5,767
31-Jan-17	116,552	6,392	323	9,032	2,461	2,200	1,039	1,341	5,550
28-Feb-17	118,392	6,547	295	9,338	2,659	2,239	1,069	1,398	5,869
31-Mar-17	120,313	6,659	306	9,482	2,711	2,387	1,083	1,412	6,022
28-Apr-17	124,051	6,861	302	9,804	2,664	2,488	1,118	1,450	6,407
31-May-17	130,770	6,947	316	9,901	2,602	2,502	1,136	1,452	6,614
30-Jun-17	122,837	6,828	295	9,760	2,512	2,446	1,120	1,436	6,427
31-Jul-17	120,086	6,649	297	9,470	2,504	2,500	1,091	1,400	6,089
31-Aug-17	119,745	6,621	296	9,429	2,519	2,388	1,085	1,392	6,010
29-Sep-17	123,271	6,882	296	9,845	2,433	2,493	1,125	1,447	6,459
31-Oct-17	125,846	6,973	292	10,011	2,346	2,566	1,141	1,462	6,648
30-Nov-17	125,687	6,868	297	9,820	2,205	2,618	1,136	1,471	6,576
29-Dec-17	126,835	7,038	312	10,028	2,154	2,601	1,163	1,513	6,890
% Chg 2017	7%	8%	2%	8%	-9%	18%	10%	10%	19%
High 2017		7,157	347	10,205	2,773	2,628	1,172	1,516	7,000
Date		09-May-17	05-Jan-17	20-Jun-17	23-Feb-17	30-Nov-17	08-Dec-17	28-Dec-17	08-Dec-17
Low 2017		6,369	276	9,009	2,088	2,189	1,036	1,337	5,521
Date		08-Feb-17	26-Oct-17	01-Feb-17	14-Dec-17	03-Jan-17	01-Feb-17	31-Jan-17	01-Feb-17

* Constats Market Cap = Main Securities Market + Enterprise Securities Market equities included in the ISEQ® Index.

ISEQ® TOTAL RETURN EQUITY INDICES 2017

Month End	ISEQ® Overall	ISEQ® Financial	ISEQ® General	ISEQ® Small Cap	ISEQ® ESM	ISEQ® 20	ISEQ® 20 Capped
30-Dec-16	13,731	748	16,455	3,386	2,515	1,393	1,770
31-Jan-17	13,475	791	16,051	3,516	2,515	1,368	1,734
28-Feb-17	13,800	721	16,595	3,804	2,561	1,407	1,808
31-Mar-17	14,104	749	16,937	3,881	2,736	1,431	1,830
28-Apr-17	14,580	738	17,575	3,813	2,851	1,482	1,887
31-May-17	14,770	773	17,759	3,727	2,874	1,507	1,892
30-Jun-17	14,517	723	17,506	3,600	2,813	1,486	1,872
31-Jul-17	14,140	726	16,987	3,588	2,875	1,448	1,825
31-Aug-17	14,094	724	16,932	3,611	2,747	1,441	1,817
29-Sep-17	14,688	725	17,732	3,487	2,871	1,498	1,894
31-Oct-17	14,886	714	18,037	3,367	2,956	1,521	1,913
30-Nov-17	14,669	726	17,704	3,165	3,037	1,514	1,928
29-Dec-17	15,034	764	18,079	3,091	3,017	1,550	1,983
% Chg 2017	9%	2%	10%	-9%	20%	11%	12%
High 2017	15,189	844	18,229	3,881	3,037	1,559	1,986
Date	05-May-17	27-Jan-17	20-Jun-17	31-Mar-17	30-Nov-17	08-Dec-17	26-Dec-17
Low 2017	13,475	675	16,051	3,068	2,514	1,368	1,734
Date	31-Jan-17	25-Oct-17	31-Jan-17	28-Dec-17	23-Jan-17	31-Jan-17	31-Jan-17

ISEQ® BOND INDICES 2017

Month End	All Bond Mkt. Cap. €m	ISEQ® All Bond	ISEQ® Under 3	ISEQ® Under 5	ISEQ® Under 10	ISEQ® 5 Plus	ISEQ® 10 Plus
30-Dec-16	117,935	118.82	89.60	103.06	114.28	132.66	141.90
31-Jan-17	118,650	115.69	88.96	102.12	112.33	127.17	131.04
28-Feb-17	121,463	117.23	88.71	102.06	113.17	130.37	136.67
31-Mar-17	121,635	116.20	88.16	101.37	112.31	129.18	134.65
28-Apr-17	123,547	116.60	87.96	101.22	112.43	130.24	136.72
31-May-17	124,143	117.06	87.74	101.08	112.67	131.42	138.45
30-Jun-17	124,060	116.08	87.17	100.39	111.68	130.16	137.61
31-Jul-17	124,504	115.89	86.96	100.20	111.55	129.98	137.03
31-Aug-17	125,268	116.62	86.68	100.02	111.81	131.77	140.49
29-Sep-17	119,218	115.98	86.33	99.64	111.38	130.81	138.61
31-Oct-17	123,781	116.62	86.15	99.52	111.60	132.20	141.51
30-Nov-17	124,724	116.33	85.77	99.16	111.20	132.01	141.88
29-Dec-17	124,107	115.82	85.36	98.68	110.64	131.47	141.56
% Chg 2017	5.23%	-2.53%	-4.73%	-4.25%	-3.18%	-0.90%	-0.24%
High 2017	117.68	89.53	102.96	113.69	133.50	144.97	
Date	03-Jan-17	04-Jan-17	04-Jan-17	04-Jan-17	06-Dec-17	18-Dec-17	
Low 2017	115.29	85.36	98.68	110.64	126.77	130.26	
Date	20-Mar-17	29-Dec-17	29-Dec-17	29-Dec-17	30-Jan-17	30-Jan-17	

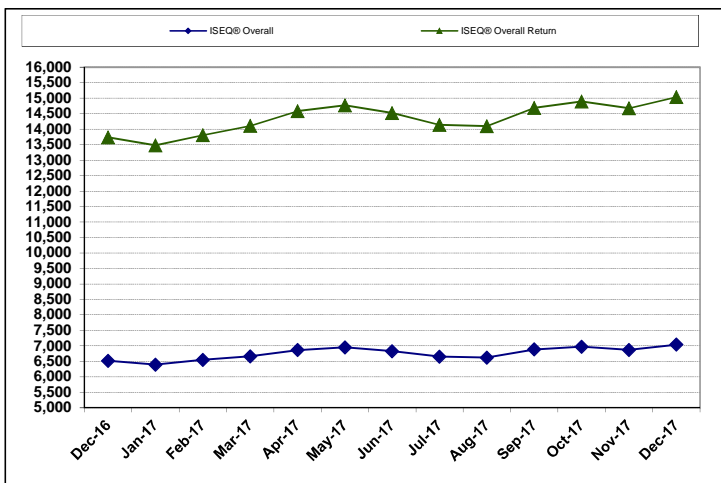
ISEQ® TOTAL RETURN BOND INDICES 2017

Month End	ISEQ® All Bond	ISEQ® Under 3	ISEQ® Under 5	ISEQ® Under 10	ISEQ® 5 Plus	ISEQ® 10 Plus
30-Dec-16	202.71	143.71	169.42	190.55	228.71	254.93
31-Jan-17	198.15	143.25	168.54	187.93	220.13	236.87
28-Feb-17	201.23	143.35	168.99	189.82	225.98	247.33
31-Mar-17	200.08	143.03	168.43	188.99	224.51	244.12
28-Apr-17	201.24	143.16	168.69	189.69	226.79	248.21
31-May-17	202.61	143.37	169.06	190.69	229.37	251.83
30-Jun-17	201.49	142.96	168.46	189.58	227.67	250.71
31-Jul-17	201.71	143.16	168.70	189.93	227.85	250.09
31-Aug-17	203.51	143.23	168.97	190.92	231.45	256.79
29-Sep-17	202.92	143.16	168.87	190.71	230.25	253.77
31-Oct-17	204.55	143.42	169.21	191.63	233.16	259.46
30-Nov-17	204.55	143.29	169.08	191.45	233.31	260.55
29-Dec-17	204.13	143.10	168.75	191.00	232.82	260.36
% Chg 2017	0.70%	-0.42%	-0.39%	0.24%	1.79%	2.13%
High 2017	205.98	143.68	169.36	192.23	235.99	266.39
Date	06-Dec-17	04-Jan-17	04-Jan-17	07-Dec-17	06-Dec-17	18-Dec-17
Low 2017	197.757	142.96	168.18	187.70	219.44	235.46
Date	30-Jan-17	06-Jul-17	21-Mar-17	30-Jan-17	30-Jan-17	30-Jan-17

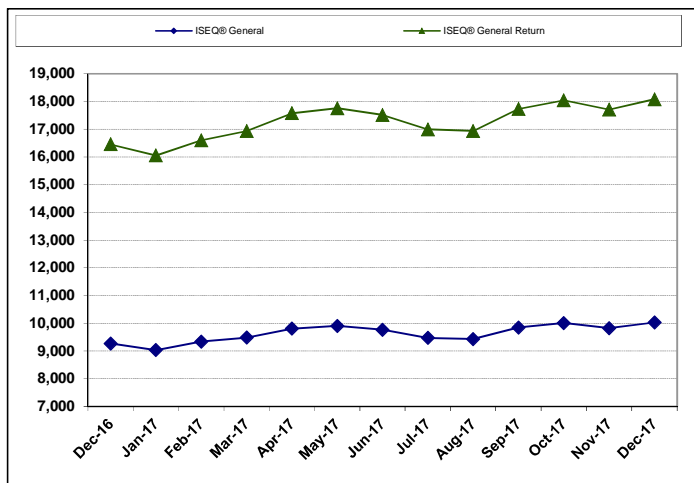
Annual Statistical Report 2017



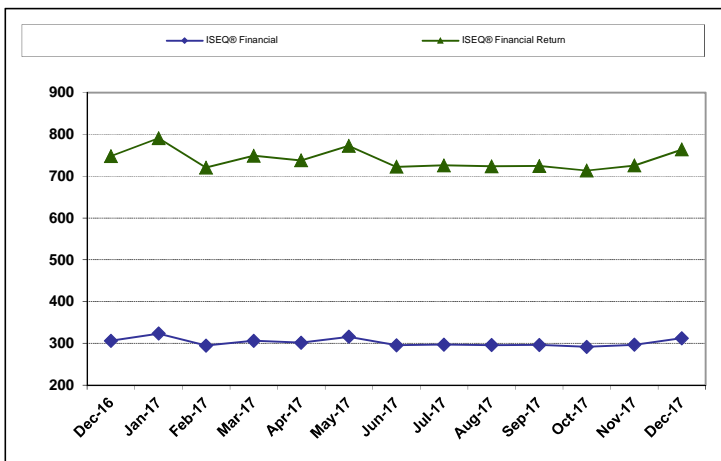
ISEQ® OVERALL INDEX



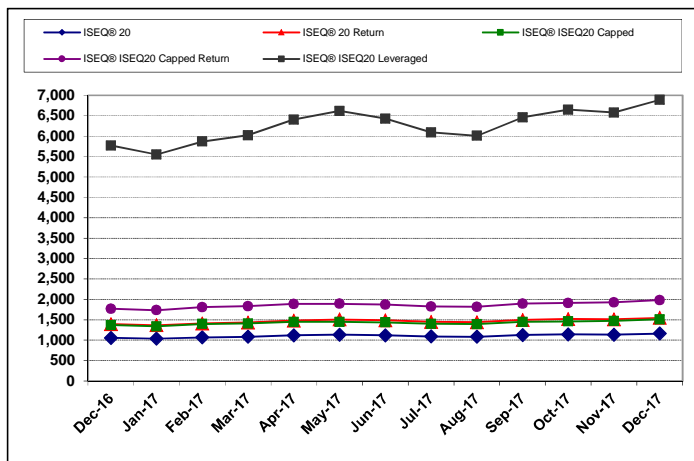
ISEQ® GENERAL INDEX



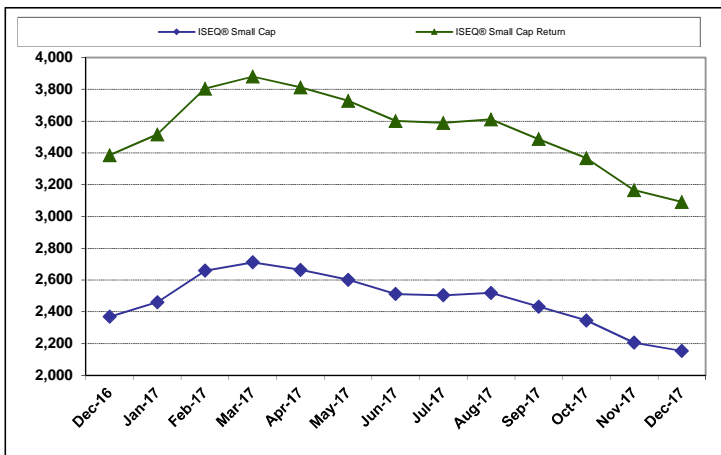
ISEQ® FINANCIAL INDEX



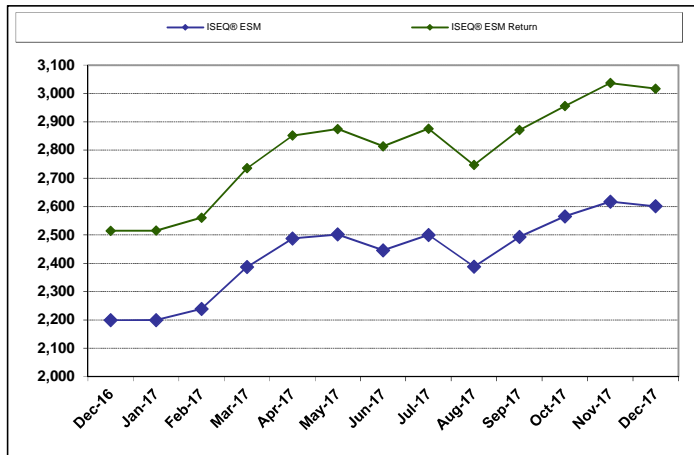
ISEQ® 20, ISEQ® 20 CAPPED, ISEQ® 20 LEVERAGED INDICES



ISEQ® SMALL CAP INDEX



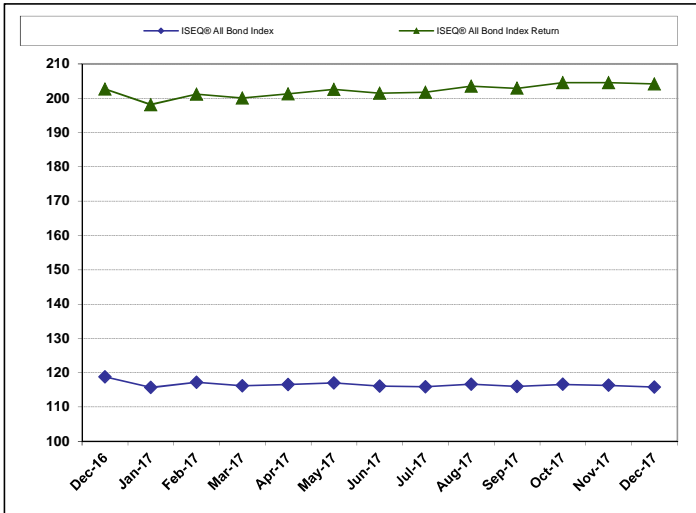
ISEQ® ESG INDEX



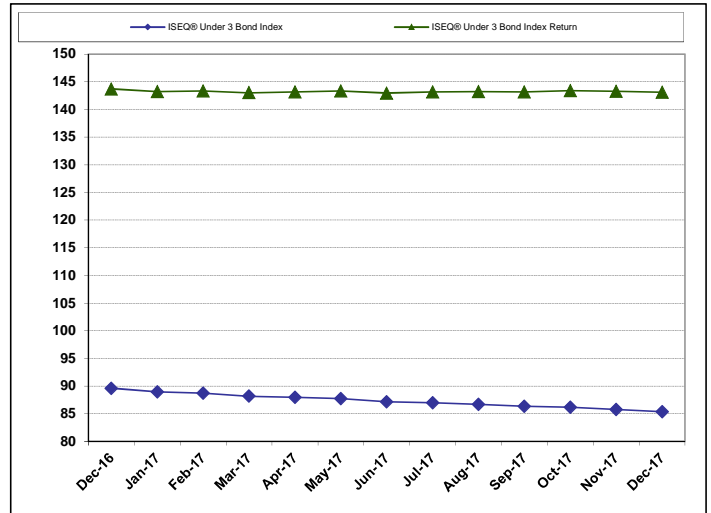
Annual Statistical Report 2017



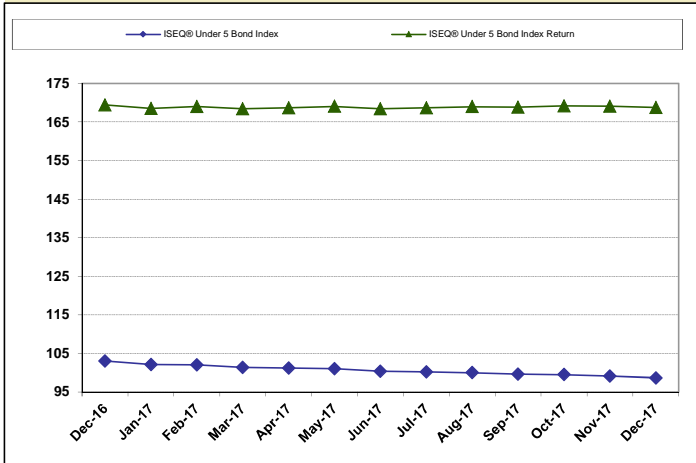
ISEQ® ALL BOND INDEX



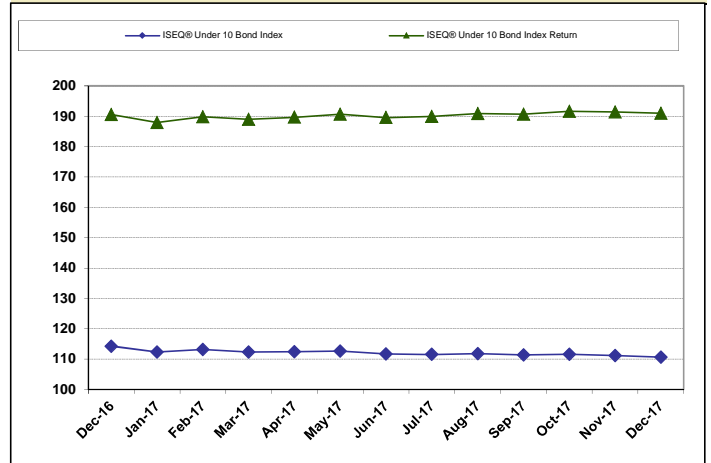
ISEQ® UNDER 3 BOND INDEX



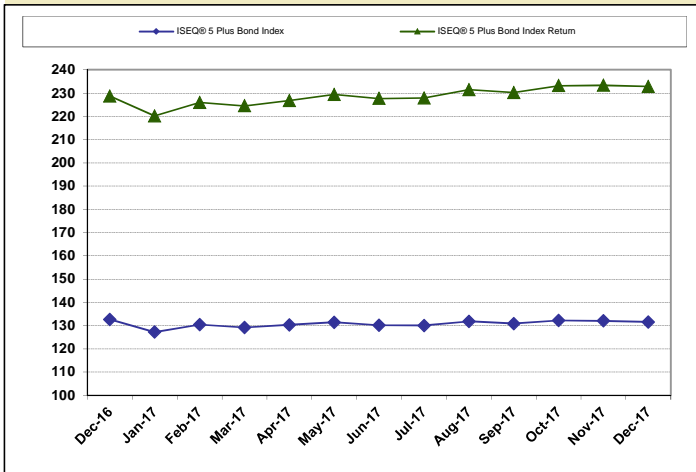
ISEQ® UNDER 5 BOND INDEX



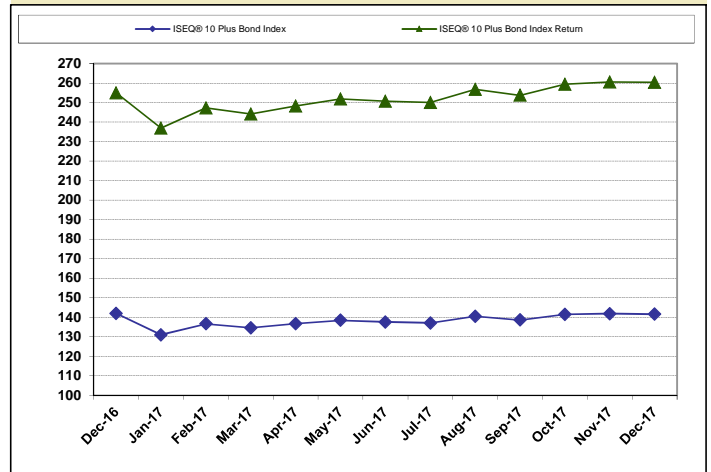
ISEQ® UNDER 10 BOND INDEX



ISEQ® 5 PLUS BOND INDEX



ISEQ® 10 PLUS BOND INDEX



Annual Statistical Report 2017



INDIVIDUAL COMPANY DATA 2017

	Share Price (€) 29/12/2017	Share Price (€) 30/12/2016	Absolute Change 2017	% Change 2017	Market Cap. €m 29-Dec-17	Market Turnover €m 2017	Volume (m) 2017	ISEQ® Weighting 29-Dec-17	ISEQ® Beta Coef 2017
Main Securities Market									
AIB GROUP PLC	5.5000	5.0000	0.50	10%	14,929.10	6,384.54	1,244.45	4.38	0.30
Aminex Plc	0.0330	0.0250	0.01	32%	120.23	8.91	171.56	0.09	0.54
ARYZTA AG	33.1000	41.4500	-8.35	-20%	2,939.84	275.96	9.47	3.09	1.03
Bank of Ireland Group Plc Note 1	7.0950	7.0200	0.07	-1%	7,654.25	9,978.38	25,062.63	6.69	2.88
BOI NC. Euro Pref Stock	24.0000	22.6000	1.40	6%	72.64	6.06	0.25	-	0.00
BOI NCP STKSRS A STG1&STG9 LIQ	18.7413	23.3465	-4.61	-20%	35.16	0.01	0.00	-	0.00
C&C Group Plc	2.8500	3.8500	-1.00	-26%	880.37	1,023.93	307.52	0.92	0.35
CAIRN HOMES PLC	1.8900	n/a	n/a	n/a	1,439.56	610.02	352.60	1.46	0.09
CRH Plc 5PCCum Pref	1.0000	1.0000	0.00	0%	0.05	-	-	-	0.00
CRH Plc 7PC'A' Cum Pref	1.0500	1.0000	0.05	5%	0.92	0.00	0.00	-	0.00
CRH Plc Ord	29.9550	32.9550	-3.00	-9%	25,127.70	18,151.71	577.18	25.52	1.43
Dalata Hotel Group Plc	6.3050	4.3950	1.91	43%	1,148.52	1,205.66	239.88	1.18	0.50
DATALEX PLC	2.8500	3.4400	-0.59	-17%	219.17	171.62	46.36	0.16	-0.14
Diageo Plc	14.4200	14.4200	0.00	0%	35,899.98	-	-	-	0.00
FBD Holdings Plc	10.1100	6.8900	3.22	47%	350.48	114.71	13.86	0.24	0.09
Glanbia Plc ORD Eo 0.06	14.9000	15.78	-0.88	-6%	4,411.08	3,410.37	202.62	3.07	0.39
GLENVEAGH PROPERTIES PLC	1.1800	n/a	n/a	n/a	787.12	626.07	548.74	0.58	0.05
Green REIT Plc	1.5550	1.3720	0.18	13%	1,077.64	1,221.47	849.37	1.04	0.22
Hibernia REIT Plc	1.5240	1.2310	0.29	24%	1,055.14	1,136.96	820.36	1.07	0.28
Hostelworld Group Plc	4.1900	2.5900	1.60	62%	400.44	4.22	1.21	0.41	0.57
IFG Grp Plc	2.1200	1.7600	0.36	20%	223.46	113.72	64.31	0.21	0.27
Independent News & Media Plc	0.0920	0.1275	-0.04	-28%	127.56	85.52	775.38	0.09	0.05
Irish Continental Group Plc	5.7600	4.5000	1.26	28%	1,093.50	588.17	110.65	0.94	0.33
Irish Residential Prop. REIT	1.5000	1.1700	0.33	28%	625.94	536.13	403.52	0.54	0.25
Kenmare Resources Plc	3.1200	2.9500	0.17	6%	341.96	2.54	0.78	0.25	0.43
Kerry Grp Plc	93.5000	67.9000	25.60	38%	16,471.34	8,830.73	113.41	14.45	0.58
Kingspan Grp Plc	36.4050	25.8000	10.61	41%	6,531.39	5,666.18	182.96	5.61	0.78
Paddy Power Betfair Plc	99.2000	101.5000	-2.30	-2%	8,376.94	4,667.40	50.00	8.70	0.84
Permanent TSB Group Holdings	2.2500	2.7600	-0.51	-18%	1,023.06	602.24	270.45	0.26	0.47
Ryanair Holdings Plc	15.0500	14.5050	0.55	4%	17,802.05	15,097.16	913.71	9.04	1.29
Smurfit Kappa Group Plc	28.1900	21.7950	6.40	29%	6,676.68	7,060.34	276.92	6.31	1.01
Tesco Plc	4.1400	4.1400	0.00	0%	33,911.68	-	-	-	0.00
Tullow Oil Plc Note 2	2.2730	2.9233	-0.65	-22%	3,150.59	4.53	2.01	-	0.00
Enterprise Securities Market									
Abbey Plc	14.5000	13.9500	0.55	4%	310.87	31.04	2.20	0.06	0.08
Amryt Pharma Plc	0.2400	0.2000	0.04	20%	65.96	0.60	2.55	0.04	0.85
Applegreen Plc	5.4150	4.2000	1.22	29%	495.79	156.78	29.09	0.23	0.03
CPL Resources Plc	6.2180	5.3600	0.86	16%	168.96	146.37	23.31	0.11	0.21
Donegal Investment Group Plc	7.7886	5.3030	2.49	47%	75.17	15.52	2.61	0.07	-0.08
Draper Esprit Plc	4.2160	3.9000	0.32	8%	301.92	1.67	0.44	-	0.00
Falcon Oil & Gas Ltd	0.2400	0.0564	0.18	326%	223.25	1.27	6.28	-	0.00
First Derivatives Plc	47.3330	25.0500	22.28	89%	1,208.34	3.41	0.10	0.84	0.01
GAN Plc	0.3800	0.4000	-0.02	-5%	26.62	0.37	1.29	-	0.00
Great Western Mining Corp Plc	0.0190	0.0100	0.01	90%	11.26	0.13	10.02	0.01	-0.95
Greencoast Renewables Plc	1.0700	n/a	n/a	n/a	288.90	84.69	80.09	0.19	0.03
Mainstay Medical Intl Plc	12.8000	14.2000	-1.40	-10%	84.72	0.78	0.05	0.04	-0.10
Malin Corporation Plc	8.5000	12.2000	-3.70	-30%	359.76	29.42	2.75	0.30	-0.05
Mincon Group Plc	1.0000	0.7310	0.27	37%	210.54	20.06	20.46	0.08	0.10
Origin Enterprises Plc	6.3400	6.1810	0.16	3%	796.17	585.31	87.50	0.81	0.41
Ormonde Mining Plc	0.0270	0.0180	0.01	50%	12.76	1.41	70.87	0.01	0.11
Ovoca Gold Plc	0.0820	0.1290	-0.05	-36%	6.69	0.20	2.04	-	-0.70
Petronet Resources Plc	0.0100	0.0280	-0.02	-64%	7.02	0.49	20.61	-	-0.43
Providence Resources Plc	0.0950	0.1747	-0.08	-46%	56.78	7.26	58.96	0.06	-0.12
Total Produce Plc	2.5600	1.9650	0.60	30%	835.86	277.12	130.43	0.84	-0.64
Venn Life Sciences Hldgs Plc	0.1450	0.2700	-0.13	-46%	8.74	0.04	0.17	-	0.00
Zamano Plc	0.0450	0.0600	-0.02	-25%	4.48	0.26	5.48	-	-0.22
Exchange Traded Funds on ISE-Xetra									
WisdomTree Issuer Plc	14.1150	12.8420	1.27	10%	19.76	12.40	0.93	-	0.00

Note 1: Bank of Ireland Group Plc price (30th December 2016) has been adjusted to reflect a consolidation of one Ordinary Share for every 30 existing units of ordinary stock on the tenth of July 2017.

Note 2: Tullow Oil Plc price (30th December 2016) has been adjusted to reflect a rights issue of 25 New Ordinary Shares at a price of £1.30 per unit of Ordinary Stock for every 49 Existing Ordinary Shares held on the ninth of July

Disclaimer
Statistics are prepared based on the best information available to us at time of publication. The calculation of statistics may be revised from time to time.
For other statistics please check our website, www.ise.ie.

The Irish Stock Exchange,
28 Anglesea Street,
Dublin 2.
Tel : +353 1 6174200
Fax : +353 1 6776045
E - Mail : info@ise.ie
Web Address : www.ise.ie