

Annual Statistical Report 2016

SUMMARY OF KEY STATISTICS	2016	2015	2014	2013	2012
Number of Days Per Year	254	254	254	254	254
Turnover	€m	€m	€m	€m	€m
Equities - Main Securities Market (MSM)	86,684	79,727	61,384	56,553	36,867
Equities - Main Securities Market (MSM) (Grey Market Trading)	0	0.1	0	134	0
Equities - Enterprise Securities Market (ESM)	2,786	4,411	2,094	888	469
ETFs - ISEQ 20® ETF	9	23	20	29	11
Total Equities and ETFs	89,478	84,161	63,499	57,604	37,347
Average Equities and ETFs	352	331	250	227	147
Irish Government Bonds	201,378	240,582	249,177	92,218	64,748
Irish Government Bonds (Grey Market Trading)	0	0	0	15,016	0
Treasury Bills	3,803	4,536	7,570	3,444	2,338
Total Irish Government Securities	205,181	245,118	256,747	110,678	67,086
Daily Average Irish Government Securities	808	965	1,011	436	264
Trade Figures					
Equities - MSM	6,331,210	5,355,138	4,219,249	3,292,752	2,339,240
Equities - MSM (Grey Market Trading)	0	2	0	890	0
Equities - ESM	249,762	250,384	234,536	136,662	84,258
ETFs - ISEQ 20® ETF	912	906	1,132	872	674
Total Equities and ETFs	6,581,884	5,606,430	4,454,917	3,431,176	2,424,172
Average Equities and ETFs	25,913	22,073	17,539	13,509	9,544
Irish Government Bonds	53,220	66,224	59,542	33,831	23,383
Irish Government Bonds (Grey Market Trading)	0	0	0	624	0
Treasury Bills	255	332	410	325	270
Total Irish Government Securities	53,475	66,556	59,952	34,780	23,653
Daily Average Irish Government Securities	211	262	236	137	93
Money Raised (Domestic) (See Note 1)	€m	€m	€m	€m	€m
Equities - MSM	255	701	910	1,401	52
Equities - ESM	258	2,423	370	116	111
Total Equities	513	3,124	1,281	1,517	163
Number of Companies Raising Funds	11	13	15	14	10
Irish Government Bonds	8,350	13,000	11,750	7,736	9,715
Treasury Bills	2,000	1,500	2,500	4,000	2,000
Total Irish Government Securities	10,350	14,500	14,250	11,736	11,715
Market Capitalisation	€m	€m	€m	€m	€m
Equities - MSM (Included in ISEQ®)	100,199	98,942	77,395	65,863	57,274
Equities - ESM (Included in ISEQ®) (See Note 2)	18,127	23,303	47,269	63,088	29,091
Total Equities (Included in ISEQ®) (See Note 3)	118,326	122,245	124,663	128,951	86,365
ETFs - ISEQ 20® ETF	28	32	24	26	18
Irish Government Bonds	119,125	119,443	110,304	95,162	90,176
ISEQ® Equity Overall Index					
ISEQ® Overall Index	6,517.24	6,791.68	5,224.56	4,539.43	3,396.67
% Change (on year)	-4%	30%	15%	34%	17%
ISEQ® Overall Total Return Index	13,730.86	14,108.36	10,559.35	9,038.52	6,656.15
% Change (on year)	-3%	34%	17%	36%	20%
ISEQ® All Bond Index					
ISEQ® All Bond Index	118.82	118.68	120.71	110.17	104.06
% Change (on year)	0%	-2%	10%	6%	21%
ISEQ® All Bond Total Return Index	202.71	195.87	192.156	170.47	154.41
% Change (on year)	3%	2%	13%	10%	27%
Member Firms					
Number of Member Firms (of which International)	47(38)	47(38)	47(38)	47(38)	45(38)
Number Of Companies (Domestic & Foreign)					
MSM (See Note 4)	26	26	26	25	27
ESM	25	27	26	25	23
Total	51	53	52	50	50
Investment Funds					
Funds (Including Umbrella Funds)	503	600	676	803	932
Subfunds	1,211	1,451	1,509	1,549	1,647
Total	1,714	2,051	2,185	2,352	2,579
ETFs (See Note 5)	215	185	114		
Fund Classes (See Note 5)	5,765	6,938	7,253	7,130	7,565
Total Fund Classes	5,980	7,123	7,367	7,130	7,565
Debt					
Programmes	750	714	699	666	552
Non Programmes	3,226	3,147	3,049	2,825	2,628
Total	3,976	3,861	3,748	3,491	3,180
Debt Tranches (See Note 6)	29,057	27,124	25,047	21,719	20,286

Note 1 : The equity money raised statistics were re-stated in Q3 2013. The statistics published above reflect this change

Note 2 : If AIB is excluded from the calculations, the market capitalisation of ESM companies included in the ISEQ indices would be €4.6bn at the end of 2016.

Note 3 : If AIB is excluded from the calculations, the total market capitalisation of companies included in the ISEQ indices would be €105bn at the end of 2016.

Note 4 : There are an additional 4 preference share securities listed on the MSM to companies which also have their shares traded on the ISE.

Note 5 : Pre 2014 fund class totals include both fund classes and ETFs.

Note 6 : Debt tranches also includes Irish Government bonds and treasury bills.

Annual Statistical Report 2016

ENTRANTS AND DEPARTURES

Entrants to the Market

	2016	2015	2014	2013	2012
Companies	2	4	3	5	1

Entrants to Equity Markets

Venn Life Sciences Holdings plc				18-Jan-16	
Draper Esprit Plc				15-Jun-16	

Investment Funds

Total (Funds & Subfunds)	121	167	183	183	226
ETFs (See Note 1)	46	79			
Fund Classes (See Note 1)	995	1,326	1,662	1,747	1,641
Total Fund Classes	1,041	1,405	1,662	1,747	1,641

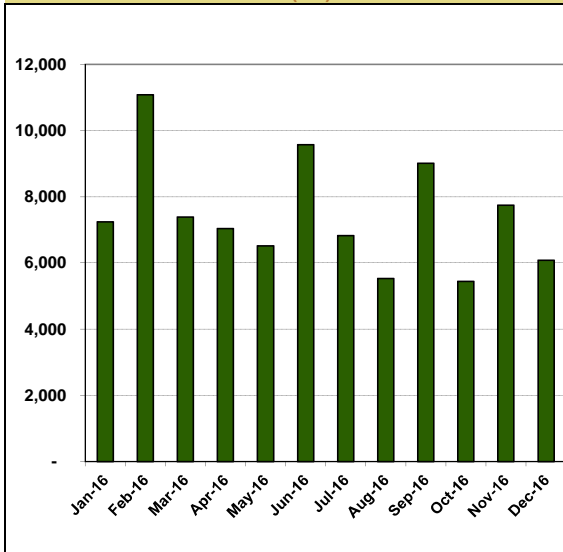
Debt

Programmes	78	74	97	139	74
Non Programmes	401	477	508	445	226
Total	479	551	605	584	300
Tranches	6,777	7,219	7,013	4,562	2,424

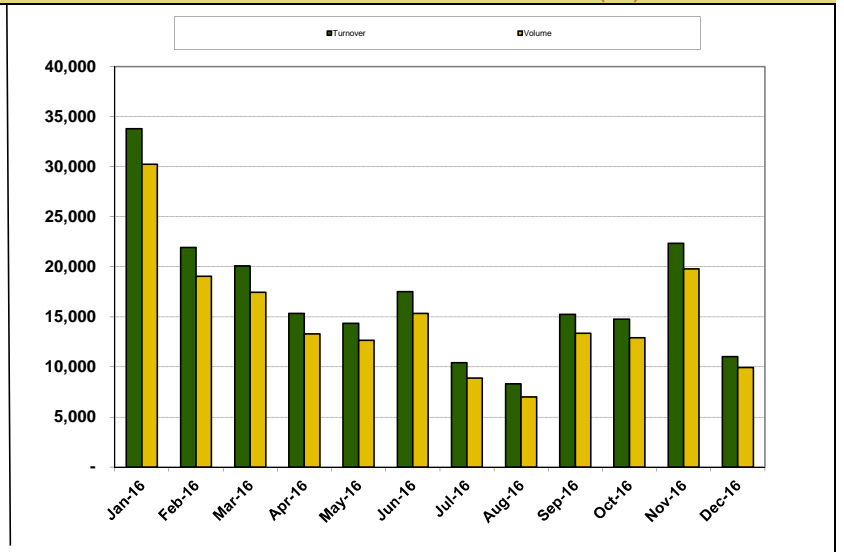
Departures from Equity Markets

Prime Active Capital Plc				04-Mar-16	
Petroceltic International Plc				16-Jun-16	
Merrion Pharmaceuticals Plc				20-Sep-16	
Wireless Group Plc				21-Oct-16	

EQUITY AND ETF TURNOVER (€m) 2016



IRISH GOVERNMENT BOND AND TREASURY BILL TURNOVER (€m) 2016



EQUITY TURNOVER (€m)

	Main Securities Market	Enterprise Securities Market	Exchange Traded Funds
January	6,995.33	245.78	2.25
February	10,869.24	203.52	1.10
March	7,088.37	301.82	0.30
April	6,677.22	365.17	0.88
May	6,183.90	334.09	0.43
June	9,286.27	283.97	0.33
July	6,685.34	144.15	0.30
August	5,446.41	87.72	0.12
September	8,838.63	174.63	0.30
October	5,367.70	74.18	0.35
November	7,611.18	127.22	1.34
December	5,633.93	443.57	1.10

BOND TURNOVER (€m)

	Irish Government Bonds	Irish Treasury Bills
January	33,801.39	0.00
February	21,935.41	0.00
March	19,214.11	867.63
April	15,297.63	43.44
May	14,366.16	0.00
June	17,147.84	383.31
July	10,295.24	127.30
August	8,229.80	77.42
September	14,180.02	1,062.67
October	14,779.34	0.00
November	22,248.21	107.31
December	9,883.10	1,133.90

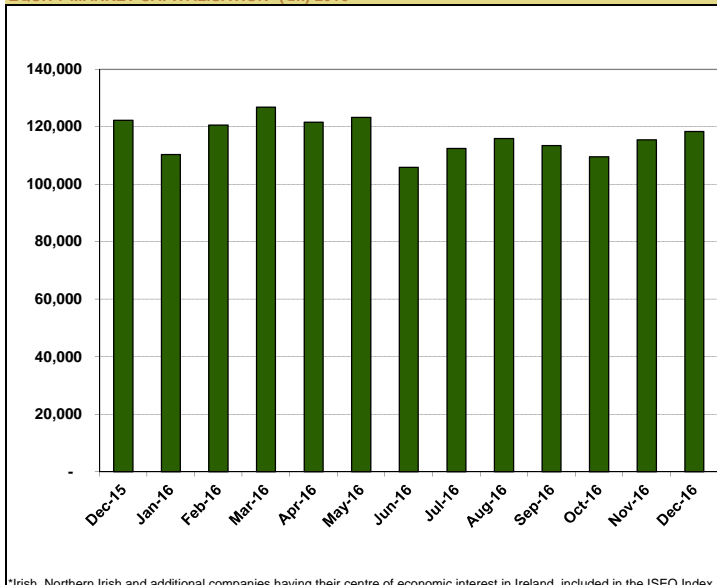
Total	86,683.51	2,785.83	8.81	Total	201,378.24	3,802.98
Daily Average	341.27	10.97	0.03	Daily Average	792.83	14.97

Note 1 : Pre 2016 fund class totals include both fund classes and ETFs.

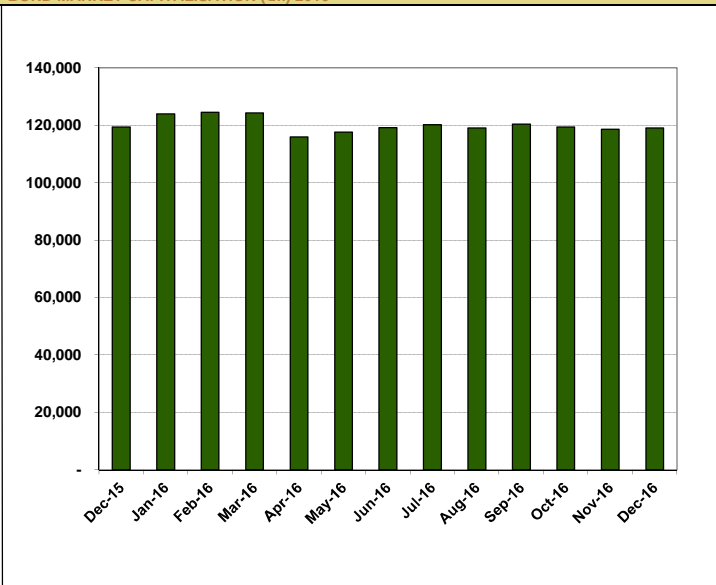
Annual Statistical Report 2016



EQUITY MARKET CAPITALISATION* (€m) 2016



BOND MARKET CAPITALISATION (€m) 2016



*Irish, Northern Irish and additional companies having their centre of economic interest in Ireland, included in the ISEQ Index.

ISEQ® EQUITY INDICES 2016

Month End	Overall Mkt. Cap.* €m	ISEQ® Overall	ISEQ® Financial	ISEQ® General	ISEQ® Small Cap	ISEQ® ESM	ISEQ® 20	ISEQ® 20 Capped	ISEQ® 20 Leveraged
31-Dec-15	122,245	6,792	440	9,359	2,458	2,195	1,126	1,509	6,866
29-Jan-16	110,345	6,343	395	8,783	2,335	2,024	1,054	1,429	5,993
29-Feb-16	120,631	6,344	339	8,920	2,300	1,920	1,055	1,422	5,951
31-Mar-16	126,786	6,309	332	8,883	2,428	1,997	1,046	1,373	5,837
29-Apr-16	121,576	6,161	344	8,628	2,404	1,979	1,019	1,337	5,534
31-May-16	123,307	6,493	353	9,116	2,455	2,084	1,073	1,400	6,130
30-Jun-16	105,906	5,642	243	8,075	2,235	1,801	926	1,203	4,448
29-Jul-16	112,506	5,868	246	8,413	2,230	1,848	962	1,251	4,790
31-Aug-16	115,877	6,170	266	8,831	2,403	1,947	1,008	1,315	5,246
30-Sep-16	113,519	6,035	246	8,669	2,431	1,899	984	1,287	5,002
31-Oct-16	109,546	5,913	258	8,454	2,310	1,908	962	1,252	4,771
30-Nov-16	115,427	6,216	265	8,902	2,267	1,957	1,011	1,305	5,259
30-Dec-16	118,326	6,517	306	9,265	2,369	2,199	1,059	1,371	5,767
% Chg 2016	-3%	-4%	-30%	-1%	-4%	0%	-6%	-9%	-16%
High 2016		6,792	446	9,359	2,518	2,227	1,123	1,507	6,866
Date		04-Jan-16	05-Jan-16	04-Jan-16	11-Jan-16	30-Dec-16	05-Jan-16	05-Jan-16	04-Jan-16
Low 2016		5,287	214	7,477	2,141	1,711	872	1,144	3,904
Date		24-Jun-16	03-Aug-16	24-Jun-16	03-Aug-16	07-Jul-16	27-Jun-16	27-Jun-16	24-Jun-16

* Constats Market Cap = Main Securities Market + Enterprise Securities Market equities included in the ISEQ® Index.

ISEQ® TOTAL RETURN EQUITY INDICES 2016

Month End	ISEQ® Overall	ISEQ® Financial	ISEQ® General	ISEQ® Small Cap	ISEQ® ESM	ISEQ® 20	ISEQ® 20 Capped	
31-Dec-15	14,108	1,074	16,370	3,491	2,467	1,461	1,914	
29-Jan-16	13,185	964	15,374	3,316	2,276	1,369	1,815	
29-Feb-16	13,206	829	15,638	3,269	2,159	1,374	1,817	
31-Mar-16	13,197	812	15,656	3,452	2,249	1,366	1,756	
29-Apr-16	12,917	840	15,244	3,419	2,232	1,334	1,716	
31-May-16	13,622	863	16,117	3,499	2,354	1,406	1,799	
30-Jun-16	11,837	594	14,276	3,186	2,036	1,213	1,545	
29-Jul-16	12,309	601	14,874	3,178	2,089	1,260	1,607	
31-Aug-16	12,946	649	15,614	3,427	2,201	1,320	1,690	
30-Sep-16	12,700	601	15,378	3,468	2,151	1,293	1,659	
31-Oct-16	12,452	630	15,007	3,300	2,163	1,265	1,616	
30-Nov-16	13,093	647	15,805	3,239	2,219	1,329	1,684	
30-Dec-16	13,731	748	16,455	3,386	2,515	1,393	1,770	
% Chg 2016	-3%	-30%	1%	-3%	2%	-5%	-8%	
High 2016	13,993	1,068	16,455	3,552	2,536	1,449	1,905	
Date		05-Jan-16	04-Jan-16	30-Dec-16	06-Jan-16	19-Dec-16	05-Jan-16	05-Jan-16
Low 2016	11,112	523	13,420	3,083	1,937	1,142	1,470	
Date		27-Jun-16	02-Aug-16	27-Jun-16	03-Aug-16	06-Jul-16	27-Jun-16	27-Jun-16

ISEQ® BOND INDICES 2016

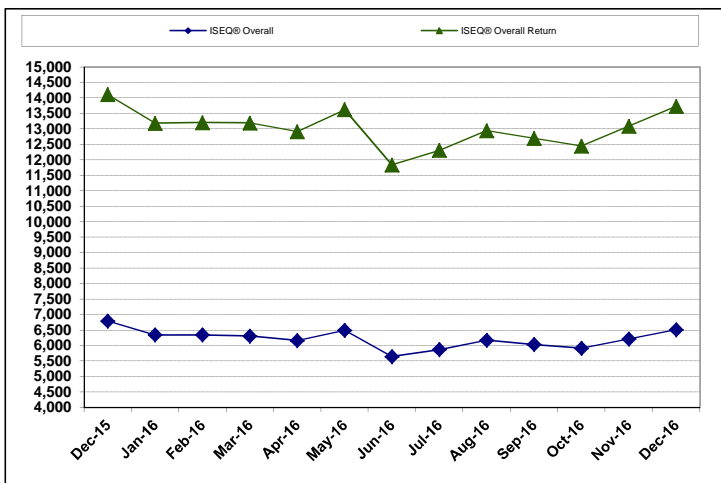
Month End	All Bond Mkt. Cap. €m	ISEQ® All Bond	ISEQ® Under 3	ISEQ® Under 5	ISEQ® Under 10	ISEQ® 5 Plus	ISEQ® 10 Plus
31-Dec-15	117,766	118.68	93.12	106.02	115.47	128.11	131.76
29-Jan-16	122,265	120.17	92.98	106.15	116.32	131.56	137.90
29-Feb-16	122,979	120.17	92.61	105.73	116.11	132.17	139.27
31-Mar-16	115,256	120.62	92.28	105.43	116.12	133.61	142.52
29-Apr-16	114,338	119.05	91.95	105.11	115.24	130.54	136.88
31-May-16	115,836	119.85	91.62	104.91	115.55	132.53	140.52
30-Jun-16	117,361	121.44	91.33	104.75	116.08	136.23	150.61
29-Jul-16	118,386	122.16	91.23	104.74	116.42	137.82	154.35
31-Aug-16	117,963	121.77	90.80	104.35	116.17	137.45	152.94
30-Sep-16	119,279	121.97	90.49	104.08	116.25	138.22	154.07
31-Oct-16	118,313	119.89	90.08	103.52	114.95	134.41	145.98
30-Nov-16	117,544	118.43	89.86	103.20	114.05	131.66	140.34
30-Dec-16	117,935	118.82	89.60	103.06	114.28	132.66	141.90
% Chg 2016	0.14%	0.11%	-3.78%	-2.80%	-1.03%	3.55%	7.70%
High 2016	122.50	93.19	106.24	116.73	138.64	155.09	
Date		11-Aug-16	06-Jan-16	06-Jan-16	13-Jul-16	11-Aug-16	12-Aug-16
Low 2016	117.18	89.60	102.93	113.39	128.63	132.76	
Date		12-Dec-16	30-Dec-16	12-Dec-16	14-Nov-16	04-Jan-16	12-Jan-16

ISEQ® TOTAL RETURN BOND INDICES 2016

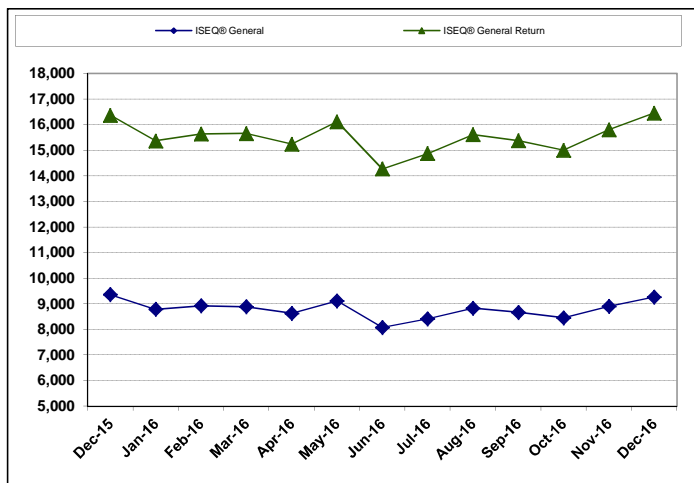
Month End	ISEQ® All Bond	ISEQ® Under 3	ISEQ® Under 5	ISEQ® Under 10	ISEQ® 5 Plus	ISEQ® 10 Plus	
31-Dec-15	195.87	142.93	167.14	185.75	215.50	232.42	
29-Jan-16	198.83	143.21	167.88	187.64	221.64	243.48	
29-Feb-16	199.41	143.17	167.82	187.90	223.14	246.25	
31-Mar-16	200.72	143.21	167.94	188.50	226.05	252.32	
29-Apr-16	198.68	143.20	167.98	187.64	221.33	242.78	
31-May-16	200.57	143.25	168.29	188.75	225.19	249.57	
30-Jun-16	203.75	143.31	168.60	190.15	231.92	267.85	
29-Jul-16	205.49	143.64	169.14	191.23	235.07	274.88	
31-Aug-16	205.60	143.52	169.16	191.51	235.31	273.52	
30-Sep-16	206.32	143.54	169.31	192.09	236.72	275.25	
31-Oct-16	203.41	143.41	168.99	190.54	230.76	261.35	
30-Nov-16	201.51	143.59	169.06	189.62	226.57	251.76	
30-Dec-16	202.71	143.71	169.42	190.55	228.71	254.93	
% Chg 2016	3.50%	0.54%	1.36%	2.58%	6.13%	9.68%	
High 2016	206.39	143.76	169.50	192.10	236.81	276.73	
Date		10-Aug-16	29-Dec-16	29-Dec-16	28-Sep-16	10-Aug-16	10-Aug-16
Low 2016	196.321	142.91	167.28	186.05	216.42	234.27	
Date		04-Jan-16	18-Feb-16	04-Jan-16	04-Jan-16	04-Jan-16	04-Jan-16

Annual Statistical Report 2016

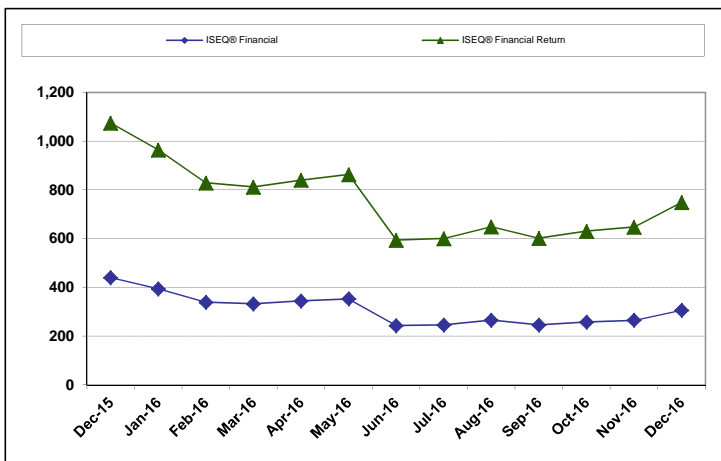
ISEQ® OVERALL INDEX



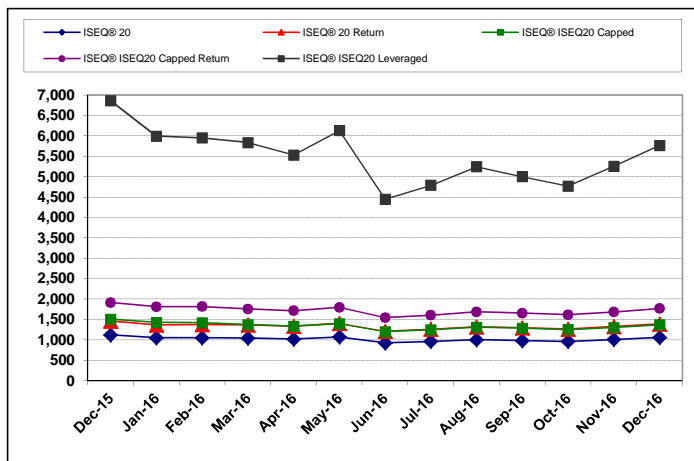
ISEQ® GENERAL INDEX



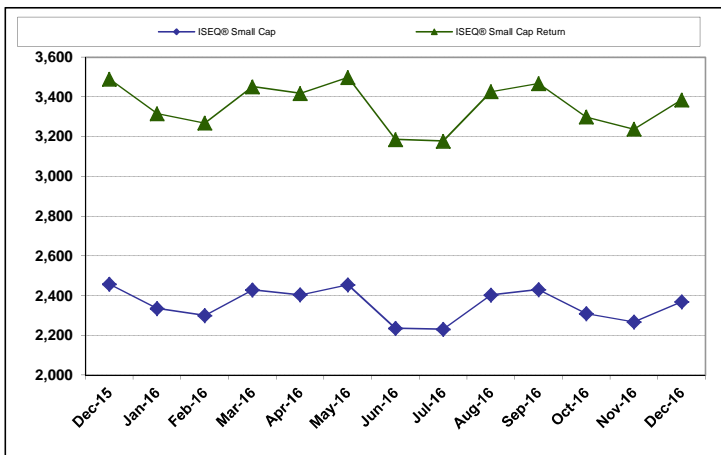
ISEQ® FINANCIAL INDEX



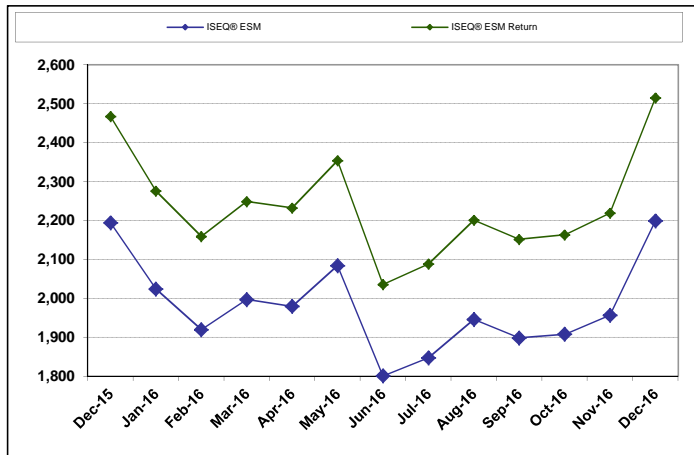
ISEQ® 20, ISEQ® 20 CAPPED, ISEQ® 20 LEVERAGED INDICES



ISEQ® SMALL CAP INDEX

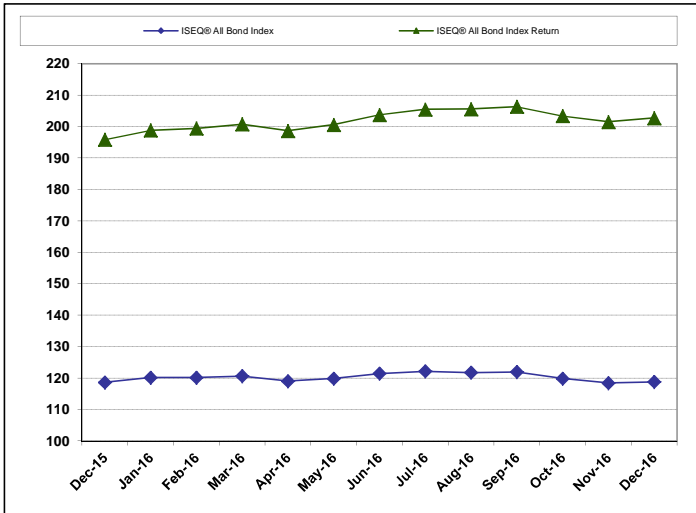


ISEQ® ESG INDEX

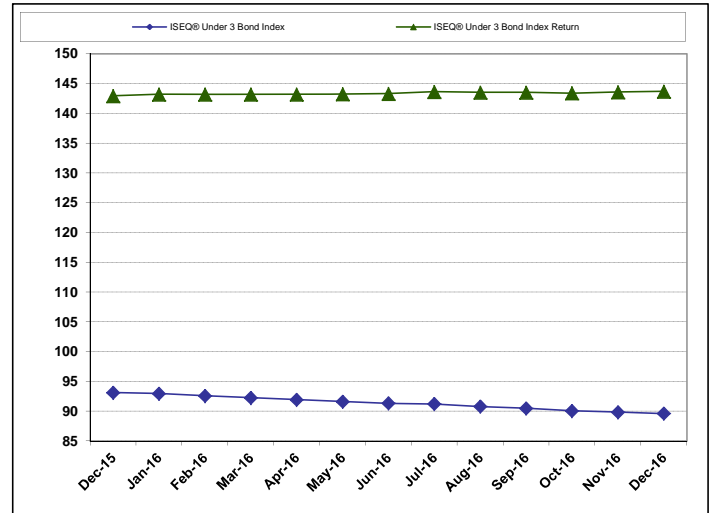


Annual Statistical Report 2016

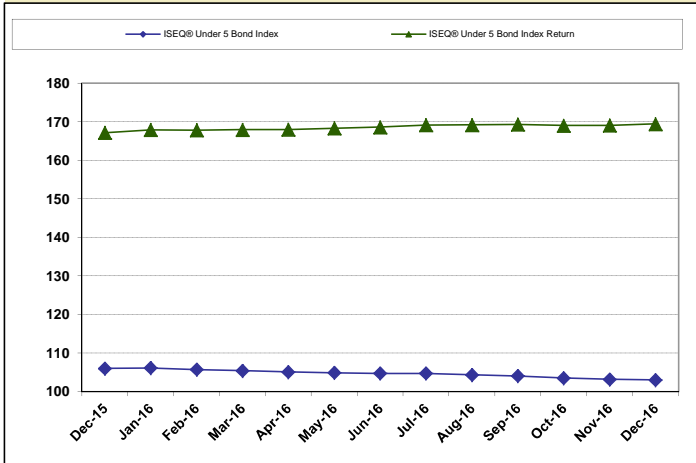
ISEQ® ALL BOND INDEX



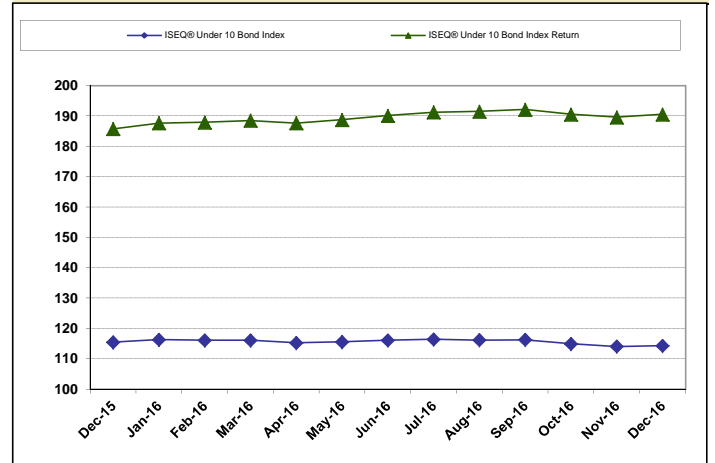
ISEQ® UNDER 3 BOND INDEX



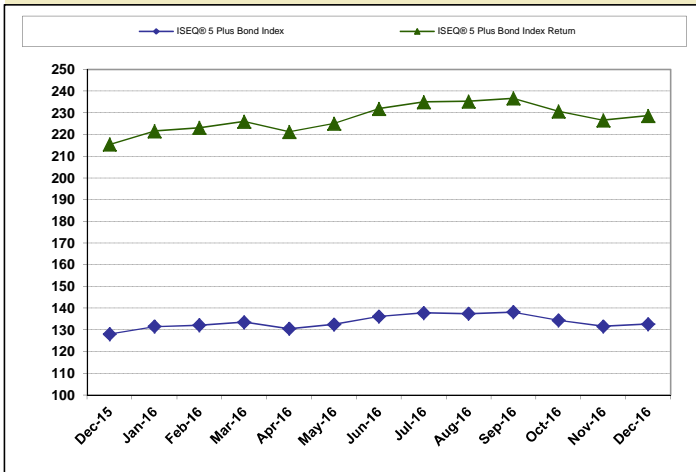
ISEQ® UNDER 5 BOND INDEX



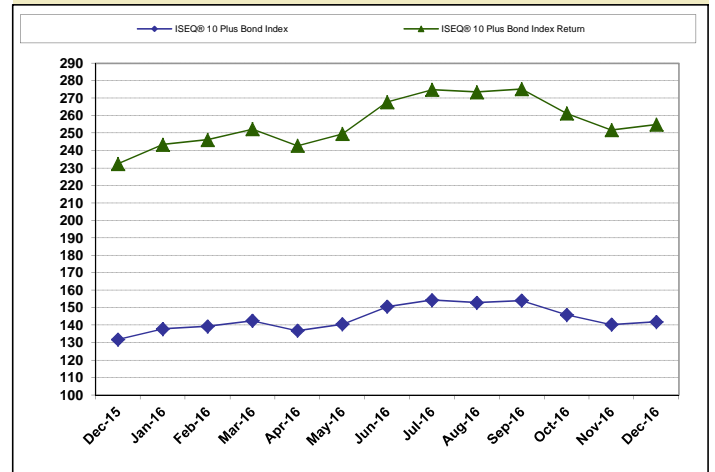
ISEQ® UNDER 10 BOND INDEX



ISEQ® 5 PLUS BOND INDEX



ISEQ® 10 PLUS BOND INDEX



Annual Statistical Report 2016



INDIVIDUAL COMPANY DATA 2016

	Share Price (€) 30/12/2016	Share Price (€) 31/12/2015	Absolute Change 2016	% Change 2016	Market Cap. €m 30-Dec-16	Market Turnover €m 2016	Volume (m) 2016	ISEQ® Weighting 30-Dec-16	ISEQ® Beta Coef 250 2016
Main Securities Market									
Aminex Plc Note 1	0.0250	0.0160	0.01	56%	86.90	1.29	66.49	0.05	0.53
ARYZTA AG	41.4500	47.2465	-5.80	-12%	3,679.04	416.25	10.83	3.84	0.66
BOI NC, Euro Pref Stock	22.6000	21.5000	1.10	5%	68.40	5.41	0.25	-	0.00
BOI NCP STKSRS A STG1&STG9 LIQ	23.3465	23.3465	0.00	0%	43.80	4.45	0.22	-	0.00
Bank of Ireland	0.2340	0.3380	-0.10	-31%	7,573.01	9,983.48	43,460.38	6.64	1.87
C&C Group Plc	3.8500	3.7130	0.14	4%	1,218.25	1,271.70	347.68	1.21	0.41
CRH Plc 5PCum Pref	1.0000	1.0000	0.00	0%	0.05	-	-	-	0.00
CRH Plc 7PC A' Cum Pref	1.0000	1.0000	0.00	0%	0.87	-	-	-	0.00
CRH Plc Ord	32.9550	26.7000	6.26	23%	27,448.83	19,029.63	686.23	28.92	1.14
Dalata Hotel Group Plc	4.3950	5.5000	-1.11	-20%	804.14	1,286.02	296.72	0.84	0.95
DATALEX PLC	3.4400	3.1500	0.29	9%	254.70	123.18	38.42	0.15	0.31
Diageo Plc	14.4200	14.4200	0.00	0%	36,279.69	-	-	-	0.00
FBD Holdings Plc	6.8900	6.6100	0.28	4%	238.85	111.42	17.50	0.17	0.36
Glanbia Plc ORD Eo 0.06	15.7800	16.9500	-1.17	-7%	4,671.52	2,901.88	173.77	3.10	0.58
Green REIT Plc	1.3720	1.5930	-0.22	-14%	947.16	1,123.97	803.20	1.23	0.97
Hibernia REIT Plc	1.2310	1.41	-0.18	-13%	843.7913	1,234.54	958.30	0.87	0.46
Hostelworld Group Plc	2.5900	3.0720	-0.48	-16%	247.53	3.95	1.34	0.26	0.57
IFG Grp Plc	1.7600	2.2300	-0.47	-21%	185.52	102.57	50.61	0.17	0.53
Independent News & Media Plc	0.1275	0.1690	-0.04	-25%	176.78	120.81	836.95	0.10	0.29
Irish Continental Group Plc	4.5000	5.4140	-0.91	-17%	846.24	1,065.66	224.51	0.76	0.84
Irish Residential Prop. REIT	1.1700	1.1700	0.00	0%	488.23	460.05	405.58	0.43	0.29
Kenmare Resources Plc Note 2	2.9500	1.2600	1.69	134%	323.32	6.86	46.33	0.20	0.04
Kerry Grp Plc	67.9000	76.3100	-8.41	-11%	11,949.22	9,217.44	123.93	10.86	0.43
Kingspan Grp Plc	25.6000	24.3100	1.49	6%	4,636.90	5,463.13	240.25	3.96	1.28
Paddy Power Betfair Plc	101.5000	123.1000	-21.60	-18%	8,518.22	10,849.54	91.13	8.87	0.96
Permanent TSB Group Holdings	2.7600	4.6010	-1.84	-40%	1,254.96	589.27	255.82	0.33	1.38
Ryanair Holdings Plc	14.5050	15.0100	-0.51	-3%	18,654.31	13,984.74	1,069.97	18.74	1.29
Smurfit Kappa Group Plc	21.7950	23.5400	-1.75	-7%	5,151.14	8,055.63	371.57	5.31	0.96
Tesco Plc	4.1400	4.1400	0.00	0%	32,177.85	-	-	-	0.00
Tullow Oil Plc	3.6400	2.2340	1.41	63%	3,318.19	18.15	6.89	-	0.00
Enterprise Securities Market									
Abbey Plc	13.9500	16.5500	-2.6	-16%	300.28	17.12	1.22	0.08	0.37
Allied Irish Banks Plc	5.0000	6.6600	-1.66	-25%	13,571.91	8.46	1.27	0.01	0.32
Amryt Pharma Plc Note 3	0.2000	0.0310	0.17	545%	41.67	0.13	1.09	0.02	0.67
Applegreen Plc	4.2000	5.7000	-1.50	-26%	337.98	159.35	35.85	0.14	0.36
Conroy Gold & Natural Res. Plc	0.1633	0.6000	-0.44	-73%	1.80	0.05	0.17	0.00	0.02
CPL Resources Plc	5.3600	6.3000	-0.94	-15%	163.72	82.89	15.28	0.11	0.29
Donegal Investment Group Plc	5.3030	6.0465	-0.74	-12%	51.92	8.50	1.54	0.05	-0.03
Draper Esprit Plc	3.9000	n/a	n/a	n/a	158.92	1.16	0.29	-	0.00
Falcon Oil & Gas Ltd	0.0564	0.1100	-0.05	-49%	51.97	0.03	0.42	-	0.00
First Derivatives Plc	25.0500	21.0600	3.99	19%	621.53	9.09	0.39	0.44	0.43
Fyffes Plc	2.2600	1.5100	0.75	50%	745.61	536.54	282.33	0.68	0.32
GAN Plc	0.4000	0.4600	-0.06	-13%	28.02	0.23	0.59	-	0.00
Great Western Mining Corp Plc	0.0100	0.0060	0.00	67%	3.90	0.01	0.78	0	0.73
Karelian Diamond Resources Plc	0.0040	0.0090	-0.01	-56%	1.65	0.01	1.47	0	-0.15
Mainstay Medical Intl Plc	14.2000	17.3000	-3.10	-18%	93.89	0.71	0.05	0.02	0.08
Malin Corporation Plc	12.2000	10.6100	1.59	15%	482.64	37.12	2.87	0.14	0.05
Mincon Group Plc	0.7310	0.6500	0.08	12%	153.91	33.32	47.22	0.06	-0.10
Origin Enterprises Plc	6.1810	7.5500	-1.37	-18%	776.20	815.21	136.79	0.80	0.61
Ormonde Mining Plc	0.0180	0.0180	0.00	0%	8.51	0.89	46.40	0.01	-0.21
Ovoca Gold Plc	0.1290	0.0800	0.05	61%	10.52	0.25	2.51	0	-0.40
Petronet Resources Plc	0.0280	0.0250	0.00	12%	19.67	0.59	22.03	0.02	1.55
Providence Resources Plc	0.1747	0.2100	-0.04	-17%	104.41	3.18	21.89	0.11	1.04
Total Produce Plc	1.9650	1.4700	0.50	34%	629.66	320.52	204.15	0.56	0.26
Venn Life Sciences Hldgs Plc	0.2700	n/a	n/a	n/a	16.26	0.19	0.59	-	0.00
Zamano Plc	0.0600	0.1330	-0.07	-55%	5.97	1.90	23.87	0	0.06
Exchange Traded Funds on ISE-Xetra									
WisdomTree Issuer Plc	12.8420	13.7840	-0.94	-7%	28.25	8.81	0.71	-	0.00

Note 1: Aminex Plc price (31st December 2015) has been adjusted to reflect an open offer of 1 New Ordinary Share for every 10 Existing Ordinary Shares held at a price of Stg1.3p per New Ordinary Share on eighth of August 2016.

Note 2: Kenmare Resources Plc price (31st December 2015) has been adjusted to reflect a capital reorganisation and consolidation on the twenty sixth of July 2016.

Note 3: Fastnet Equity plc acquired Amryt Pharma Plc in a reverse takeover on nineteenth of April 2016, it also underwent a capital reorganisation and change of company name to Amryt Pharma plc on the same date.

Disclaimer
Statistics are prepared based on the best information available to us at time of publication. The calculation of statistics may be revised from time to time.
For other statistics please check our website, www.ise.ie.

The Irish Stock Exchange,
28 Anglesea Street,
Dublin 2.
Tel : +353 1 6174200
Fax : +353 1 6776045
E - Mail : info@ise.ie
Web Address : www.ise.ie