



# THE IRISH STOCK EXCHANGE

## Annual Statistical Review 2001

SUMMARY OF KEY STATISTICS	2001	2000	1999	1998
<b>MARKET CAPITALISATION</b>				
	€m	€m	€m	€m
Irish Government Bonds	18,812	20,750	16,797	24,191
Official List - Included in ISEQ	78,633	79,851	70,853	58,993
- Not Included in ISEQ	110,318	113,816	66,433	62,149
<i>ITEQ</i> (See Note 1)	1,938	3,664	N/A	N/A
Exploration Securities Market	144	499	419	201
Developing Companies Market	34	95	192	113
<b>NUMBER OF COMPANIES (Domestic)</b>				
Official List	49	57	69	66
<i>ITEQ</i> (See Note 1)	8	7	N/A	N/A
Exploration Securities Market	7	8	11	11
Developing Companies Market	4	4	4	3
Total	68	76	84	80
<b>MONEY RAISED (Domestic)</b>				
	€m	€m	€m	€m
Net Irish Government Bond Issues / (Redemptions)	(2,106)	(1,983)	(421)	(982)
Equity Issues : (See Note 2)				
Official List	4,239	5,192	4,957	1,129
<i>ITEQ</i> (See Note 1)	213	656	N/A	N/A
Exploration Securities Market	41	30	34	37
Developing Companies Market	1	1	35	25
No. Companies Raising Funds	57	48	65	55
Corporate Bond Issues	993	2,060	1,301	3,450
No. Companies Raising Funds	3	4	9	9
<b>TURNOVER</b>				
	€m	€m	€m	€m
Irish Government Bonds	43,590	44,903	110,917	89,757
Official List, <i>ITEQ</i> , ESM & DCM (See Note 3)	51,042	31,463	93,461	74,286
<b>ISEQ OVERALL INDEX</b>				
ISEQ Overall Index	5,707.00	5,722.53	5,017.54	4,995.82
% Change (on year)	-0.27%	14.05%	0.43%	23.24%
ISEQ Overall Total Return Index	8,426.72	8,297.10	7,169.37	7,016.20
<b>ENTRANTS, TRANSFERS AND DEPARTURES</b>				
<b>NEW COMPANIES ENTERING THE MARKETS</b>				
	2	3	8	3
<i>Company</i>		<i>Market</i>		<i>Date</i>
Conduit Plc		ITEQ		6-Apr-01
<b>QUOTATIONS GRANTED TO COMPANIES HAVING THEIR PRIMARY MARKET IN THE U.K.</b>				
Real Estate Opportunities Ltd		OL		22-Jun-01
<b>DEPARTURES FROM MARKETS</b>				
<i>Company</i>		<i>Departure From</i>		<i>Date</i>
Athlone Extrusions Plc		OL		9-Mar-01
Tuskar Resources Plc		ESM		9-Apr-01
ICC Bank Plc		OL		24-Apr-01
Ashquay Group Plc		OL		4-May-01
Seafield Plc		OL		8-May-01
Jermyn Investment Properties Plc		OL		19-Jun-01
Reflex Group Plc		OL		10-Sep-01
Ire-Tex Group Plc		OL		15-Oct-01
Golden Vale Plc		OL		26-Oct-01
Cream (James) Plc		OL		31-Oct-01
Eircom Plc		OL		10-Dec-01
<b>NEW FUNDS / SPECIALIST SECURITIES ENTERING THE MARKETS</b>				
UCITS & Investment Funds (Including Umbrella Funds listed for the first time)	317	207	171	197
- Sub Funds	400	318	252	233
Specialist Securities - Asset Backed	233	91	10	N/A
Specialist Securities - Bonds (Including Eurobonds)	6	0	16	N/A

**Note 1 :** *ITEQ*, the Irish Stock Exchange's specialist technology market, commenced on 8 September 2000. With the exception of Conduit Plc, *ITEQ* companies are also listed on the Official List. *ITEQ* figures are not included in Official List totals.

**Note 2 :** In line with the Federation of European Stock Exchanges (FESE), Equity money raised figures for 2001 & 2000, are based on market price on date of issue. The figures are the aggregate of both new and existing shares introduced to the market. 1999 & 1998 figures are based on net proceeds received.

**Note 3 :** Equity turnover for 2001 & 2000 is calculated using a trading based methodology. Turnover in previous years is calculated based on transaction data provided by the CREST settlement system (settlement based methodology). Pre year 2000 turnover includes domestic companies only while 2001 & 2000 turnover includes both domestic and foreign companies.

# THE IRISH STOCK EXCHANGE

# Annual Statistical Review 2001

## ISEQ INDICES 2001

Month End	Overall Mkt. Cap.* €m	ISEQ Overall	ISEQ Financial	ISEQ General	ISEQ Small Cap	ITEQ
29-Dec-00	83,428	5,722.53	7,863.83	4,629.32	981.01	1,175.25
31-Jan-01	86,161	5,891.26	8,164.39	4,746.91	1,082.96	1,139.65
28-Feb-01	86,372	5,881.82	7,761.60	4,846.62	1,085.48	1,056.06
30-Mar-01	82,532	5,541.36	7,254.59	4,580.74	1,015.99	866.90
30-Apr-01	87,041	5,833.67	7,977.78	4,730.90	1,049.43	909.58
31-May-01	90,340	6,267.40	8,425.81	5,127.03	1,083.51	876.01
29-Jun-01	92,776	6,435.15	8,641.39	5,267.04	1,126.63	895.17
31-Jul-01	88,443	6,060.64	8,062.22	4,981.54	1,111.09	657.51
31-Aug-01	84,397	5,757.76	8,042.02	4,625.87	1,133.32	574.21
28-Sep-01	73,375	5,002.77	6,534.23	4,145.46	1,010.30	412.32
31-Oct-01	76,527	5,221.16	7,204.27	4,219.52	1,021.84	473.33
30-Nov-01	77,086	5,463.77	7,622.84	4,391.99	1,057.24	508.39
31-Dec-01	80,605	5,707.00	8,034.73	4,566.14	1,096.68	509.06
<b>High 2001</b>		6,526.81	8,835.19	5,371.67	1,190.81	1,228.00
<b>Date</b>		21-Jun-01	23-May-01	21-Jun-01	11-Jul-01	25-Jan-01
<b>Low 2001</b>		4,550.58	6,044.59	3,703.44	953.86	379.70
<b>Date</b>		21-Sep-01	21-Sep-01	21-Sep-01	24-Sep-01	20-Sep-01

\* Market Capitalisation = Official List + Developing Companies Market + ITEQ equities included in the ISEQ Index.

## ISEQ TOTAL RETURN INDICES 2001

Month End	Return Overall	Return Financial	Return General	Return Small Cap	ITEQ
29-Dec-00	8,297.10	13,930.44	5,999.89	1,040.40	1,175.25
31-Jan-01	8,543.91	14,462.84	6,154.60	1,152.71	1,139.65
28-Feb-01	8,554.95	13,864.74	6,286.87	1,156.40	1,056.06
30-Mar-01	8,073.49	12,965.25	5,955.57	1,083.82	866.90
30-Apr-01	8,515.80	14,307.24	6,158.47	1,127.55	909.58
31-May-01	9,174.24	15,223.85	6,678.14	1,167.40	876.01
29-Jun-01	9,421.04	15,613.95	6,862.34	1,215.56	895.17
31-Jul-01	8,879.00	14,567.79	6,496.97	1,200.62	657.51
31-Aug-01	8,454.72	14,602.93	6,039.43	1,227.42	574.21
28-Sep-01	7,358.79	11,885.75	5,421.97	1,099.60	412.32
31-Oct-01	7,686.61	13,104.27	5,525.67	1,114.06	473.33
30-Nov-01	8,063.85	13,929.62	5,759.99	1,153.21	508.39
31-Dec-01	8,426.72	14,690.84	5,990.65	1,197.37	509.06
<b>High 2001</b>	9,454.00	15,804.91	6,909.75	1,250.62	1,225.96
<b>Date</b>	22-Jun-01	03-Jul-01	06-Jun-01	04-Sep-01	25-Jan-01
<b>Low 2001</b>	6,836.13	11,166.03	4,987.42	979.87	388.07
<b>Date</b>	21-Sep-01	25-Sep-01	21-Sep-01	03-Jan-01	20-Sep-01

## EQUITY TURNOVER (OL, ESM, DCM, ITEQ)

	2001 €m	2000 €m	1999 €m	1998 €m
January	3893.79	2,331.82	8,911.64	5,655.25
February	3906.4	2,885.77	7,817.00	7,064.12
March	5030.36	3,013.69	6,014.06	7,643.04
April	3401.54	2,156.90	7,504.33	6,979.84
May	4350.34	2,407.38	6,148.38	5,201.96
June	5003.4	2,202.10	7,340.35	5,802.92
July	4063.61	1,763.07	17,431.61	7,673.54
August	4153.26	2,168.29	5,865.82	5,666.21
September	5015.21	3,190.25	7,487.25	5,976.47
October	4375.26	2,514.84	5,844.14	5,865.78
November	4511.27	4,340.55	7,181.19	6,038.48
December	3337.11	2,488.42	5,915.70	4,718.42
<b>Total</b>	<b>51,041.55</b>	<b>31,463.06</b>	<b>93,461.47</b>	<b>74,286.03</b>
<b>Daily Average:</b>	<b>201.75</b>	<b>125.85</b>	<b>373.85</b>	<b>295.96</b>

Equity turnover for the years 2001 & 2000 is calculated using a trading based methodology. Turnover in previous years was calculated based on transaction data provided by the CREST settlement system (settlement based methodology). Pre year 2000 turnover includes domestic companies only while 2001 & 2000 turnover includes both domestic and foreign companies.

## IRISH GOVERNMENT BOND TURNOVER

	2001 €m	2001 Volume	2000 €m	1999 €m	1998 €m
January	5,133.83	5,440.26	3,151.91	4,958.54	8,904.93
February	3,854.54	4,071.72	2,694.95	5,238.39	7,931.77
March	4,212.00	4,411.34	3,725.98	4,925.43	10,958.22
April	3,615.59	3,827.13	3,610.90	4,645.84	8,382.20
May	2,872.26	3,058.92	4,786.35	67,720.04	6,720.34
June	3,217.55	3,411.12	3,532.67	4,452.35	5,094.56
July	2,749.37	2,896.38	5,494.31	4,117.71	6,067.75
August	2,979.41	3,101.70	3,141.52	2,497.56	6,806.14
September	3,914.18	4,100.25	4,474.22	2,610.09	11,009.34
October	5,785.60	5,983.33	4,101.22	2,932.43	8,499.16
November	3,470.40	3,566.31	3,630.41	4,039.64	4,482.11
December	1,785.16	1,855.30	2,558.78	2,779.01	4,899.96
<b>Total</b>	<b>43,589.89</b>	<b>45,723.76</b>	<b>44,903.22</b>	<b>110,917.03</b>	<b>89,756.48</b>
<b>Daily Average:</b>	<b>172.29</b>	<b>25.61</b>	<b>179.61</b>	<b>443.67</b>	<b>359.03</b>

## MONEY RAISED (EQUITIES)

	2001 €m	2000 €m	1999 €m	1998 €m
<b>Domestic</b>				
Money Raised	4,494	5,878	5026	1,191
No. of Companies				
Raising Funds	57	48	65	55

## MONEY RAISED (CORPORATE BONDS)

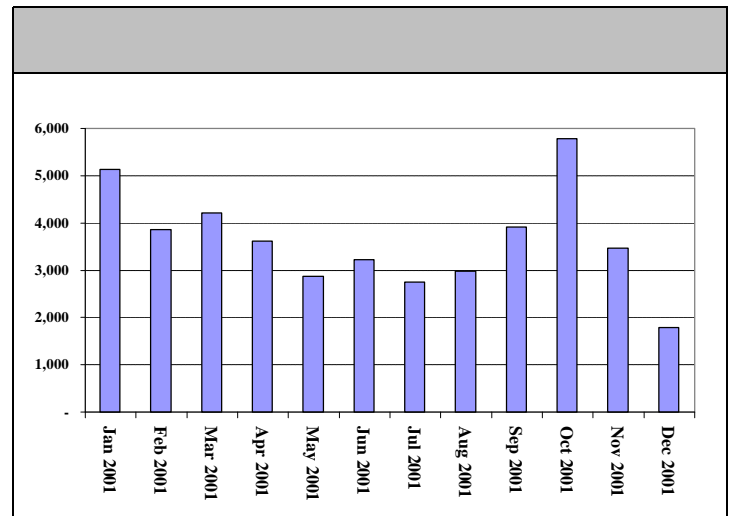
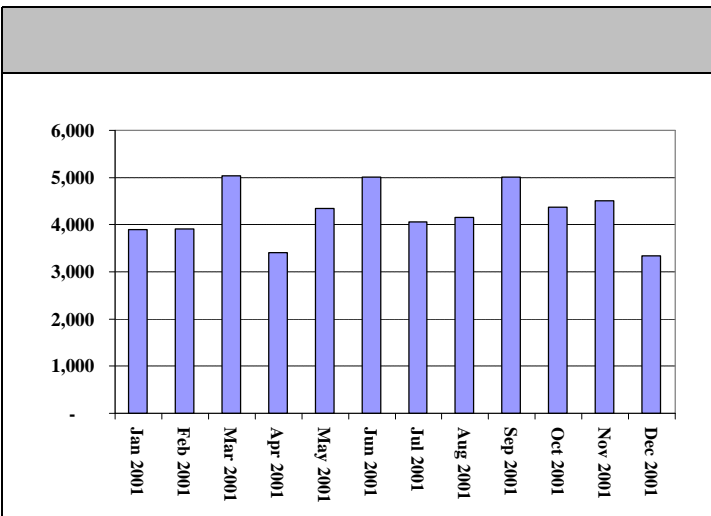
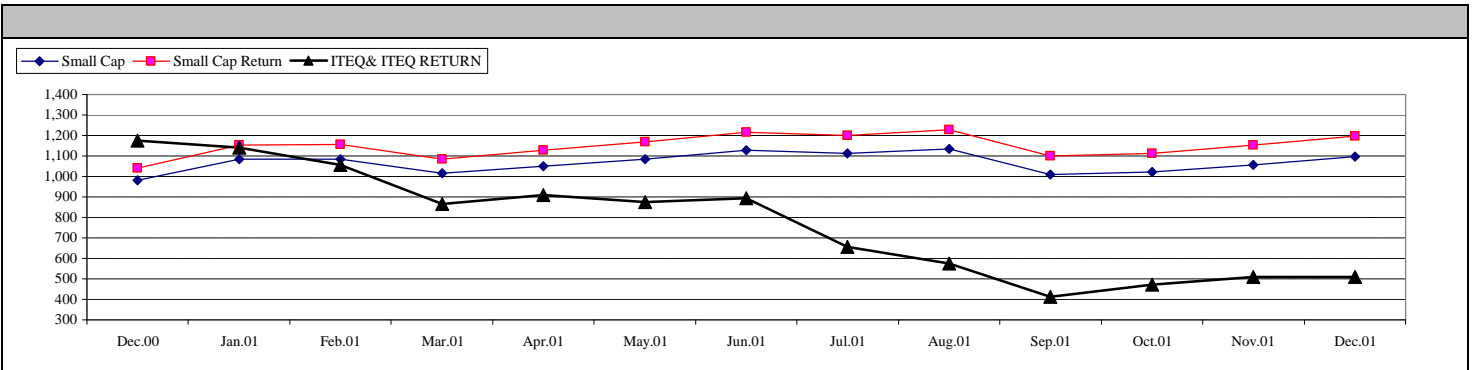
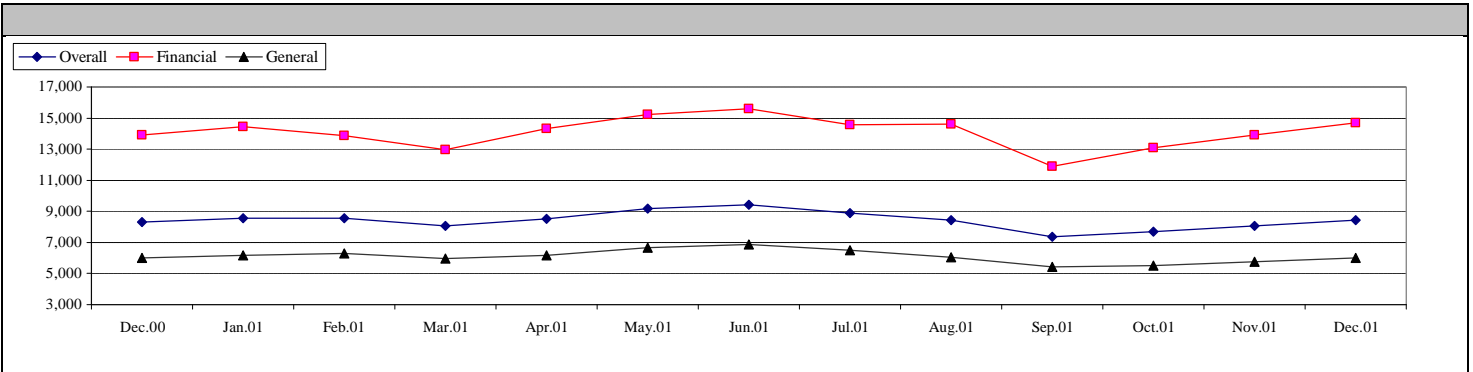
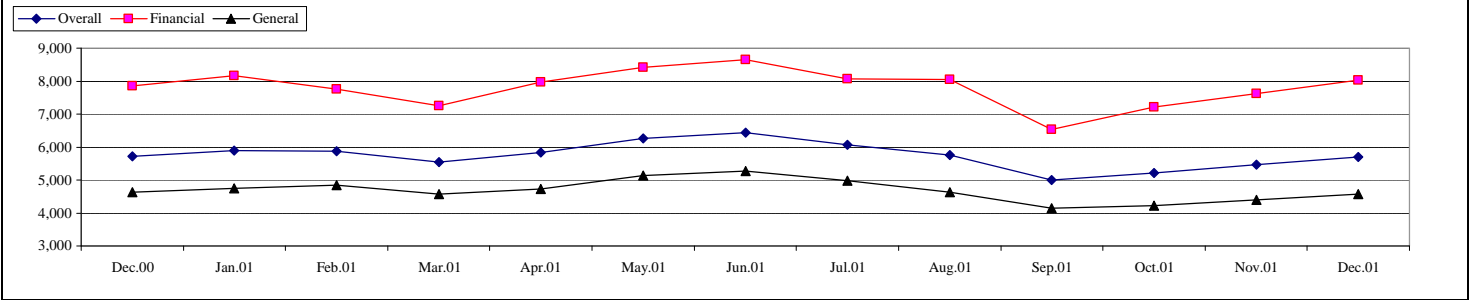
	2001 €m	2000 €m	1999 €m	1998 €m
<b>Domestic</b>				
Money Raised	993	2,060	1,301	3,450
No. of Companies				
Raising Funds	3	4	9	9

In line with FESE standards, Equity money raised figures for the year 2001 & 2000 are based on market price on date of issue. 1999 & 1998 figures are based on net proceeds received.

## NUMBER OF FUNDS / SPECIALIST SECURITIES 31 DECEMBER 2001

UCITS & Investment Funds (Including Umbrella Funds)	1,159
- Sub Funds	1,347
Specialist Securities - Asset Backed	407
Specialist Securities - Bonds (Including Eurobonds)	16

ISEQ OVERALL, FINANCIAL & GENERAL INDICES 2001



**INDIVIDUAL COMPANY DATA 2001 (Domestic)**

<b>OFFICIAL LIST</b>	<b>Share Price (€) 31.Dec.01</b>	<b>Share Price (€) 29.Dec.00</b>	<b>Absolute Change 2001</b>	<b>% Change 2001</b>	<b>Market Cap. €m 31.Dec.01</b>	<b>Market Turnover €m 2001</b>	<b>Volume 2001</b>	<b>ISEQ * Weighting 31.Dec.01</b>	<b>ISEQ ** Beta Coef 250 2001</b>
Abbey	388	290	98	34%	132.22	70.38	19.31	0.16%	0.33
Allied Irish Banks	1,300	1,235	65	5%	11,522.68	7,105.86	599.07	14.30%	1.04
Aminex	39	50	-11	-22%	29.84	0.12	0.30	0.04%	0.21
Anglo Irish Bank Corporation	435	314	121	39%	1,330.26	2,244.61	600.19	1.65%	0.88
Arcon International Resources	4	16	-12	-75%	11.50	2.88	40.34	0.01%	-0.54
Ardagh	110	140	-30	-21%	37.89	8.69	7.37	0.05%	-0.15
Arnotts	690	670	20	3%	123.54	24.64	3.60	0.15%	0.30
Bank of Ireland	1,042	1,055	-13	-1%	10,491.30	9,245.94	912.25	13.02%	1.29
Barlo Group	27	90	-63	-70%	47.26	93.54	140.12	0.06%	0.32
Bula Resources - Units of 10 shares (See Note 1)	26	39	-13	-33%	58.15	11.98	55.45	0.07%	0.73
CRH (See Note 2)	1,983	1,797	186	10%	10,334.54	7,671.05	411.39	12.82%	0.74
DCC	1,205	1,140	65	6%	1,007.03	849.57	79.45	1.25%	0.44
Donegal Creameries	240	200	40	20%	24.08	2.44	1.24	0.03%	0.28
Dragon Oil	42	33	9	27%	152.10	9.89	21.00	0.19%	-0.15
Dunloe Ewart	31	42	-11	-26%	120.25	22.61	65.05	0.15%	0.23
Elan Corporation	5,200	5,180	20	0%	17,508.12	4,109.38	70.64	21.72%	1.57
FBD Holdings	520	450	70	16%	216.46	6.01	1.37	0.27%	0.16
First Active	330	220	110	50%	468.01	180.45	61.16	0.58%	0.60
Fyffes	130	100	30	30%	448.90	421.51	358.17	0.56%	0.49
Glanbia	133	56	77	138%	389.04	113.20	117.34	0.48%	0.64
Grafton Group (see Note 3)	325	219	106	48%	567.22	201.37	65.09	0.70%	0.53
Green Property	630	710	-80	-11%	649.40	870.88	124.25	0.81%	0.46
Greencore Group	280	280	0	0%	524.00	356.62	132.80	0.65%	0.30
Gresham Hotel Group	79	105	-26	-25%	60.89	24.07	27.56	0.08%	0.96
Heiton Holdings	285	285	0	0%	140.78	119.37	37.89	0.17%	0.64
IAWS Group	837	700	137	20%	1,025.70	277.22	35.99	1.27%	0.29
IFG Group	335	190	145	76%	209.91	149.86	49.68	0.26%	0.75
Independent News & Media	210	290	-80	-28%	1,198.33	612.96	284.30	1.49%	0.72
Irish Continental Group	640	620	20	3%	169.98	123.85	19.77	0.21%	0.32
Irish Life and Permanent	1,140	1,320	-180	-14%	3,179.53	3,474.77	279.89	3.94%	0.65
IWP International	203	190	13	7%	153.16	77.25	40.91	0.19%	0.39
Jurys Doyle Hotel Group	810	904	-94	-10%	483.92	342.24	40.31	0.60%	0.42
Kenmare Resources	23	27	-4	-15%	43.94	6.73	22.82	0.05%	0.34
Kerry Group	1,365	1,375	-10	-1%	2,510.32	807.43	59.14	3.11%	0.44
Kingspan Group	330	380	-50	-13%	553.50	547.12	148.65	0.69%	0.67
Marlborough International	36	140	-104	-74%	11.33	6.32	9.88	0.01%	0.84
McInerney Holdings	135	240	-105	-44%	43.97	30.38	13.71	0.05%	0.12
Norish	48	125	-77	-62%	4.06	1.81	2.35	0.01%	0.19
Oakhill Group	12	30	-18	-60%	6.77	4.33	18.12	0.01%	0.60
Oglesby & Butler	38	60	-22	-37%	4.68	0.35	0.72	0.01%	-0.11
Power Leisure	400	275	125	45%	188.58	88.21	24.99	0.23%	0.12
Qualceram Shires	250	239	11	5%	52.38	15.33	5.37	0.06%	0.21
Readymix	128	142	-14	-10%	137.46	22.30	15.74	0.17%	-0.05
Ryanair Holdings	710	1,150	-440	-38%	5,142.64	2,827.10	265.99	6.38%	1.03
Smurfit (Jefferson) Group	245	210	35	17%	2,666.56	1,961.62	911.23	3.31%	0.52
Unidare	120	235	-115	-49%	23.74	5.49	3.15	0.03%	0.33
United Drug	1,480	1,076	404	38%	437.88	155.16	12.48	0.54%	0.26
Waterford Wedgwood	88	125	-37	-30%	666.86	581.64	571.46	0.83%	0.94

**ITEQ MARKET (See Note 4)**

Alphara Group	375	710	-335	-47%	122.74	109.04	16.87	0.15%	0.56
Conduit	292	292	0	0%	50.69	0.92	0.17	0.06%	0.19
Datalax	35	630	-595	-94%	22.94	18.65	14.07	0.03%	0.31
Horizon Technology Group	56	680	-624	-92%	35.67	68.18	31.67	0.04%	1.48
Icon	3,230	1,800	1430	79%	369.50	3.73	0.11	0.46%	0.08
Iona Technologies	2,325	7,700	-5375	-70%	622.89	107.62	3.11	0.77%	2.94
Riverdeep Group	325	365	-40	-11%	648.25	674.93	150.85	0.80%	1.41
Trinity Biotech	170	290	-120	-41%	65.67	2.91	1.09	0.08%	0.31

**EXPLORATION SECURITIES MARKET**

Celtic Resources Holdings	18	21	-3	-14%	26.11	2.04	12.35		
Ennex International - Units of 10 Shares (See Note 1)	23	66	-43	-65%	6.49	1.56	5.44		
Glencar Mining	2	16	-14	-88%	1.96	0.95	19.56		
Minmet	17	28	-11	-39%	84.38	0.59	2.62		
Ormonde Mining - Units of 10 Shares (See Note 1)	45	20	25	125%	3.05	1.53	3.36		
Ovoca Resources	12	28	-16	-57%	3.49	2.03	9.42		
Providence Resources - Units of 10 Shares (See Note 1)	11	22	-11	-50%	9.76	3.44	27.36		

**DEVELOPING COMPANIES MARKET**

CPL Resources	30	85	-55	-65%	10.86	1.41	3.20	0.01%	-0.25
Rapid Technology Group	30	105	-75	-71%	6.94	1.11	1.47	0.01%	0.27
Sherry Fitzgerald Group	96	230	-134	-58%	13.05	5.95	3.61	0.02%	0.24
SMF Technologies	40	145	-105	-72%	2.73	0.49	0.41	0.00%	0.10

**Note 1 :** Transactions in these securities are quoted and dealt in units of 10 shares. As a result the price quoted per unit of 10 shares is a multiple of 10 times the price of an individual share. In addition, the volume is in units of 10 shares. Turnover figures are unaffected.

**Note 2 :** CRH Plc price (29 Dec 2000) adjusted to reflect a rights issue at Euro 10.50 per share on the basis of 1 new ordinary share for every 4 existing ordinary shares.

**Note 3 :** Grafton Group Plc price (29 Dec 2000) adjusted to reflect a 1 for 10 stock split May 14, 2001

**Note 4 :** With the exception of Conduit Plc, all ISEQ Companies are also listed on the Official List.

**The Irish Stock Exchange**

**28 Anglesea Street,  
Dublin 2.**

**Tel : +353 1 6174200**

**Fax : +353 1 6776045**

**E - Mail : statistics@ise.ie**

**Web Address : www.ise.ie**