



THE IRISH STOCK EXCHANGE

Annual Statistical Review 2000

SUMMARY OF KEY STATISTICS	2000	1999	1998	1997
MARKET CAPITALISATION				
	€m	€m	IR£m	IR£m
Irish Government Bonds	20,750	16,797	19,052	20,430
Official List (Included in ISEQ)	79,851	70,853	46,461	36,762
(Not Included in ISEQ)	113,816	66,433	48,946	
<i>ITEQ</i> (See Note 1)	3,664	N/A	N/A	N/A
Exploration Securities Market	499	419	158	239
Developing Companies Market	95	192	89	92
NUMBER OF COMPANIES (Domestic)				
Official List	57	69	66	69
<i>ITEQ</i> (See Note 1)	7	N/A	N/A	N/A
Exploration Securities Market	8	11	11	11
Developing Companies Market	4	4	3	3
Total	76	84	80	83
MONEY RAISED (Domestic)				
	€m	€m	IR£m	IR£m
Net Irish Government Bond Issues / (Redemptions)	(1,983)	(421)	(773)	595
Equity Issues : (See Note 2)				
Official List	5,192	4,957	889	1,659
<i>ITEQ</i> (See Note 1)	656	N/A	N/A	N/A
Exploration Securities Market	30	34	29	37
Developing Companies Market	1	35	20	16
No. Companies Raising Funds	48	65	55	66
Corporate Bond Issues	2,060	1,301	2,717	782
No. Companies Raising Funds	4	9	9	7
TURNOVER				
	€m	€m	IR£m	IR£m
Irish Government Bonds	44,903	110,917	70,689	110,526
Official List, <i>ITEQ</i> , ESM & DCM (See Note 3)	31,463	93,461	58,505	22,883
ISEQ INDICES				
ISEQ Overall Index (29-Dec-2000)	5,722.53	5,017.54	4,995.82	4,053.80
% Change (on year)	14.05%	0.43%	23.24%	48.73%
ISEQ Overall Total Return Index	8,297.10	7,169.37	7,016.20	5,589.96

ENTRANTS, TRANSFERS AND DEPARTURES

NEW COMPANIES ENTERING THE MARKETS

	2000	1999	1998	1997
Equities	3	8	3	10
UCITS & Investment Funds	207	171	197	173
Specialist Securities	91	26		

ENTRIES TO MARKETS

Company	Market	Date
Riverdeep Group Plc	Official List & <i>ITEQ</i>	16-Mar-00
Datalex Plc	Official List & <i>ITEQ</i>	26-Oct-00
Power Leisure Plc	Official List	7-Dec-00

QUOTATIONS GRANTED TO COMPANIES HAVING THEIR PRIMARY MARKET IN THE U.K.

Company	Market	Date
CGNU Plc	Official List	30-May-00

DEPARTURES FROM MARKETS

Company	Departure From	Date
Gaelic Resources Plc	ESM	4-Jan-00
Jones Group Plc	Official List	22-Feb-00
Hibernian Group plc	Official List	29-Feb-00
Boxmore International plc	Official List	17-Apr-00
Norwich Union Plc	Official List	30-May-00
Mackie International Group Plc	Official List	20-Jun-00
Esat Telecom Group Plc	Official List	23-Jun-00
BCO Technologies Plc	DCM	4-Sep-00
Adare Printing Group Plc	Official List	7-Nov-00

UCITS, INVESTMENT FUNDS

Category	2000	1999	1998	1997
Investment Funds *	184	152	170	158
-Sub Funds	174	136	137	96
UCITS*	23	19	27	15
-Sub Funds	144	116	96	45

* Including Umbrella Funds listed for the first time.

SPECIALIST SECURITIES

Category	2000	1999
Asset Backed	91	10
Bonds (Including Eurobonds)	0	16

Note 1 : *ITEQ*, the Irish Stock Exchange's specialist technology market, commenced on 8 September 2000. *ITEQ* companies are also listed on the Official List.

ITEQ figures are not included in Official List totals.

Note 2 : In line with FESE standards, Equity money raised figures for the year 2000, are based on market price on date of issue. The figures are the aggregate of both new and existing shares introduced to the market during 2000.

Note 3 : Equity turnover for the year 2000 is calculated using a trading based methodology. Turnover in previous years is calculated based on transaction data provided by the CREST settlement system (settlement based methodology). Pre year 2000 turnover includes domestic companies only while current year turnover includes both domestic and foreign companies.

Consistent with the approach of the Federation of European Stock Exchanges on the introduction of the Euro on 4th January 1999, there has been no restatement of historic statistics in this report.

THE IRISH STOCK EXCHANGE

Annual Statistical Review 2000

ISEQ INDICES 2000

Month End	Overall Mkt. Cap.* €m	ISEQ Overall	ISEQ Financial	ISEQ General	ISEQ Small Cap	ITEQ
30-Dec-99	71,045	5,017.54	6,370.88	4,184.35	1,015.42	1,000.00
31-Jan-00	69,454	4,903.05	5,489.31	4,306.85	1,051.83	1,111.00
29-Feb-00	72,011	5,116.42	5,024.06	4,702.43	1,119.40	1,859.23
31-Mar-00	81,149	5,647.60	6,001.66	5,065.07	1,082.79	1,673.93
28-Apr-00	77,171	5,384.12	6,173.32	4,702.60	1,043.62	1,216.98
31-May-00	71,230	4,915.62	5,513.31	4,327.81	973.15	1,021.99
30-Jun-00	69,333	4,916.62	5,467.18	4,344.02	959.74	1,118.55
31-Jul-00	70,497	4,985.85	5,233.49	4,494.97	974.59	1,160.55
31-Aug-00	76,169	5,403.44	5,544.52	4,908.24	1,011.99	1,329.32
29-Sep-00	81,534	5,737.16	7,165.65	4,843.27	1,032.22	1,315.99
31-Oct-00	84,490	5,862.66	7,188.71	4,988.49	1,037.26	1,282.41
30-Nov-00	81,356	5,654.45	7,471.86	4,659.56	963.58	1,127.84
29-Dec-00	83,428	5,722.53	7,863.83	4,629.32	981.01	1,175.25
High 2000		5,970.69	7,891.69	5,195.36	1,133.99	2,143.06
Date		17-Nov-00	12-Dec-00	04-Sep-00	14-Mar-00	08-Mar-00
Low 2000		4,762.40	4,782.61	4,086.17	943.87	902.01
Date		02-Feb-00	15-Mar-00	05-Jan-00	12-Jul-00	07-Jan-00

* Market Capitalisation = Official List + Developing Companies Market + ITEQ equities included in the ISEQ Index.

ISEQ TOTAL RETURN INDICES 2000

Month End	Return Overall	Return Financial	Return General	Return Small Cap	ITEQ
30-Dec-99	7,169.37	10,963.75	5,371.13	1,040.55	1,000.00
31-Jan-00	7,007.06	9,446.64	5,529.82	1,079.23	1,111.00
29-Feb-00	7,314.35	8,645.98	6,040.28	1,148.95	1,859.23
31-Mar-00	8,105.68	10,445.43	6,518.00	1,120.02	1,673.93
28-Apr-00	7,741.13	10,787.97	6,057.17	1,085.39	1,216.98
31-May-00	7,072.26	9,638.66	5,578.64	1,017.86	1,021.99
30-Jun-00	7,075.17	9,558.02	5,601.19	1,004.86	1,118.55
31-Jul-00	7,183.65	9,150.83	5,805.09	1,023.72	1,160.55
31-Aug-00	7,802.03	9,757.91	6,343.28	1,064.23	1,329.32
29-Sep-00	8,297.28	12,635.37	6,267.24	1,091.57	1,315.99
31-Oct-00	8,480.23	12,677.24	6,456.53	1,097.42	1,282.41
30-Nov-00	8,189.35	13,226.33	6,031.32	1,019.72	1,127.84
29-Dec-00	8,297.10	13,930.44	5,999.89	1,040.40	1,175.25
High 2000	8,592.86	13,930.44	6,581.52	1,162.19	2,143.06
Date	08-Nov-00	29-Dec-00	27-Oct-00	13-Mar-00	08-Mar-00
Low 2000	6,832.62	8,380.10	5,246.81	1,004.86	902.01
Date	26-Jan-00	21-Feb-00	05-Jan-00	30-Jun-00	07-Jan-00

EQUITY TURNOVER (OL, ESM, DCM, ITEQ)

	2000 €m	1999 €m	1998 Ir£m	1997 Ir£m
January	2,331.82	8,911.64	4,453.87	955.21
February	2,885.77	7,817.00	5,563.45	1,068.20
March	3,013.69	6,014.06	6,019.38	767.49
April	2,156.90	7,504.33	5,497.07	1,082.11
May	2,407.38	6,148.38	4,096.88	1,820.62
June	2,202.10	7,340.35	4,570.17	1,749.34
July	1,763.07	17,431.61	6,043.40	3,565.44
August	2,168.29	5,865.82	4,462.50	1,772.92
September	3,190.25	7,487.25	4,706.85	2,179.84
October	2,514.84	5,844.14	4,619.68	2,617.00
November	4,340.55	7,181.19	4,755.69	2,269.76
December	2,488.42	5,915.70	3,716.06	3,034.95
Total	31,463.06	93,461.47	58,505.00	22,882.88
Daily Average:	125.85	373.85	233.09	91.17

Equity turnover for the year 2000 is calculated using a trading based methodology. Turnover in previous years is calculated based on transaction data provided by the CREST settlement system (settlement based methodology). Pre year 2000 turnover includes domestic companies only while current year turnover includes both domestic and foreign companies.

IRISH GOVERNMENT BOND TURNOVER

	2000 €m	2000 Volume	1999 €m	1998 Ir£m	1997 Ir£m
January	3,151.91	3,567.97	4,958.54	7,013.20	14,873.60
February	2,694.95	3,014.88	5,238.39	6,246.78	9,919.10
March	3,725.98	4,073.87	4,925.43	8,630.30	8,842.90
April	3,610.90	3,345.57	4,645.84	6,601.52	10,072.80
May	4,786.35	4,454.11	67,720.04	5,292.70	11,997.10
June	3,532.67	3,864.83	4,452.35	4,012.29	8,942.10
July	5,494.31	6,016.79	4,117.71	4,778.74	7,855.40
August	3,141.52	3,436.69	2,497.56	5,360.27	5,198.90
September	4,474.22	4,887.41	2,610.09	8,670.56	13,057.00
October	4,101.22	4,416.42	2,932.43	6,693.63	9,855.80
November	3,630.41	3,933.51	4,039.64	3,529.95	5,311.10
December	2,558.78	2,727.66	2,779.01	3,859.03	4,600.70
Total	44,903.22	47,739.71	110,917.03	70,688.97	110,526.40
Daily Average:	179.61	190.96	443.67	282.76	440.34

MONEY RAISED (EQUITIES)

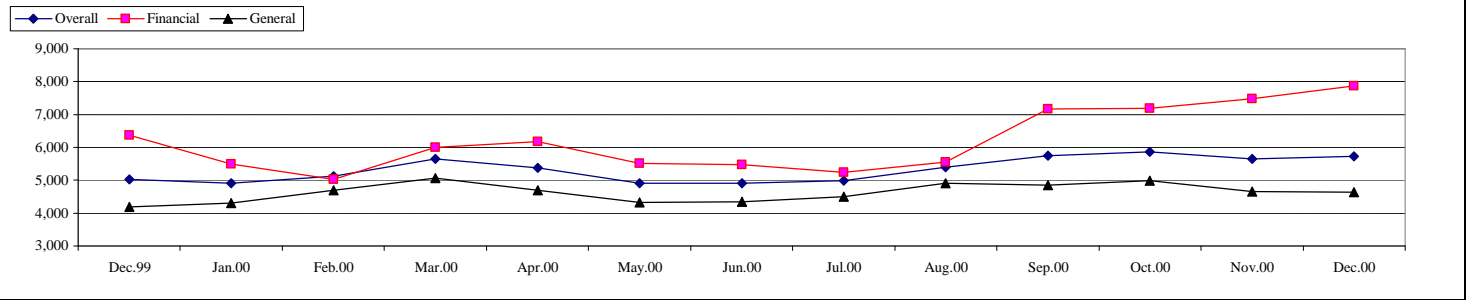
	2000 €m	1999 €m	1998 Ir£m	1997 Ir£m
Domestic (See Note 1)				
Money Raised	5,878	5026	938	1712
No. of Companies				
Raising Funds	48	65	55	66

MONEY RAISED (CORPORATE BONDS)

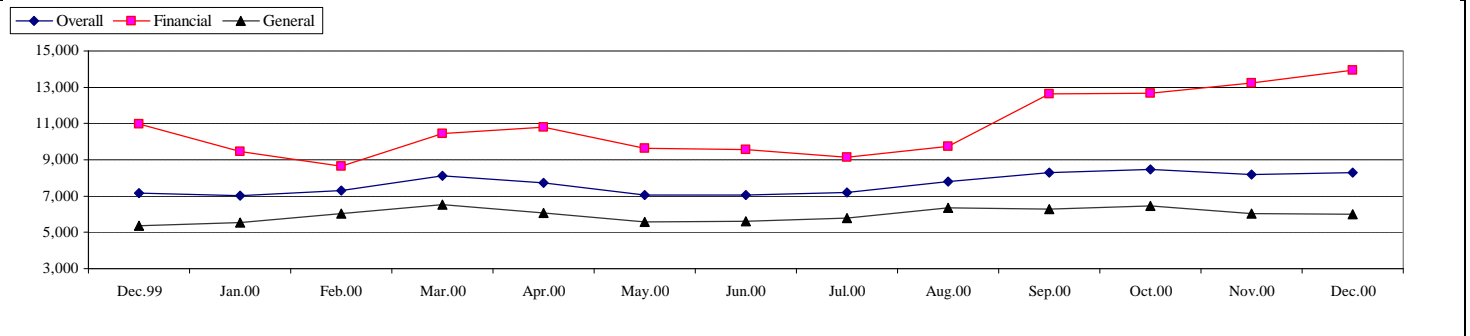
	2000 €m	1999 €m	1998 Ir£m	1997 Ir£m
Domestic				
Money Raised	2,060	1,301	2,717	782
No. of Companies				
Raising Funds	4	9	9	7

In line with FESE standards, Equity money raised figures for the year 2000, are based on market price on date of issue. The figures are the aggregate of both new (€ 4,205m) and existing shares (€ 1,673m) introduced to the market during 2000.

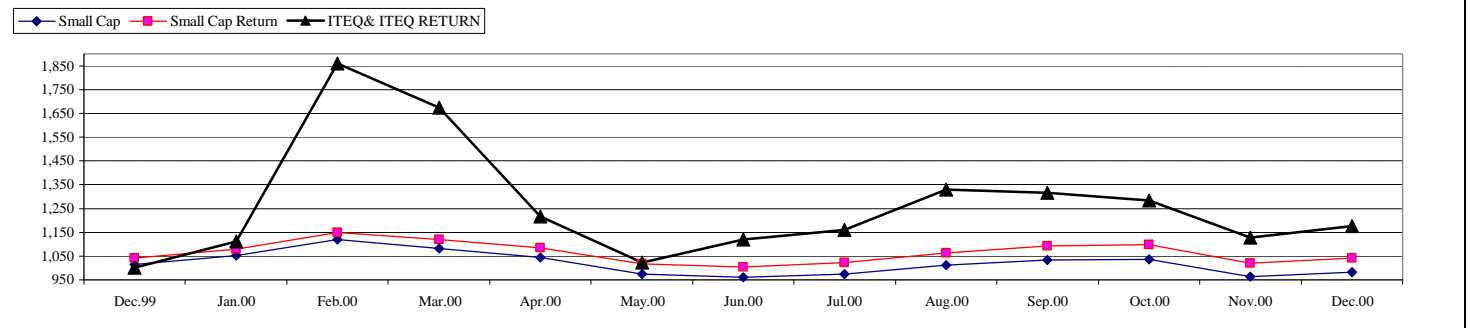
ISEQ OVERALL, FINANCIAL & GENERAL INDICES 2000



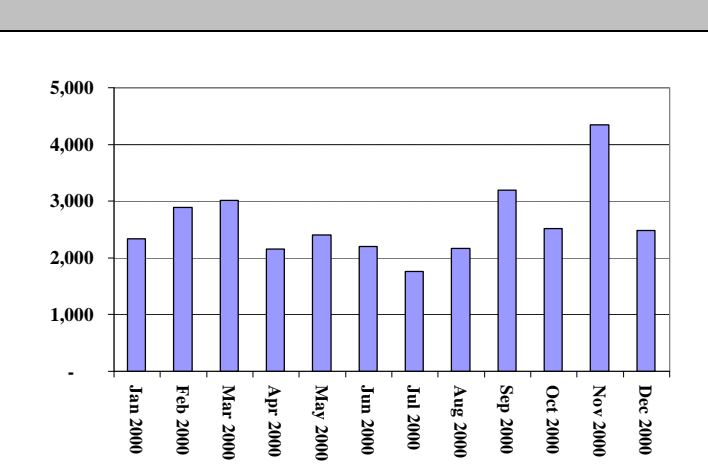
ISEQ OVERALL, FINANCIAL & GENERAL RETURN INDICES 2000



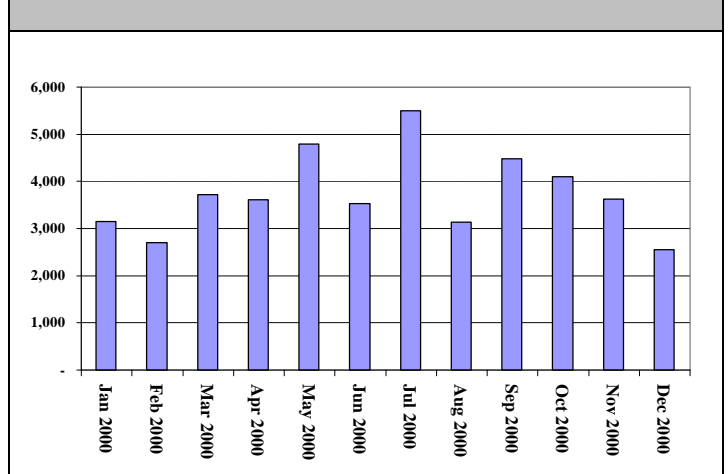
ISEQ SMALL CAP & ITEQ INDICES 2000



OFFICIAL LIST EQUITY TURNOVER (€m) 2000



IRISH GOVERNMENT BOND TURNOVER (€m) 2000



INDIVIDUAL COMPANY DATA 2000

	Share Price (€) 29.Dec.00	Share Price (€) 30.Dec.99	Absolute Change 2000	% Change 2000	Market Cap. €m 29.Dec.00	Market Turnover €m 2000	Volume 2000	ISEQ * Weighting 29.Dec.00	ISEQ ** Beta Coef 250 2000
OFFICIAL LIST (Domestic)									
Abbey	290	325	-35	-11%	101.30	33.70	11.41	0.12%	-0.08
Allied Irish Banks	1,235	1,132	103	9%	10,858.43	4,974.44	468.69	12.99%	1.07
Aminex	50	50	0	0%	38.27	0.04	0.07	0.05%	-0.01
Anglo Irish Bank Corporator	314	230	84	37%	888.08	665.46	268.61	1.06%	0.31
Arcon International Resources	16	21	-5	-24%	46.00	6.72	29.94	0.06%	-0.35
Ardagh	140	170	-30	-18%	47.52	18.46	11.64	0.06%	-0.13
Arnotts	670	620	50	8%	120.48	46.40	7.13	0.14%	0.00
Athlone Extrusions	115	75	40	53%	53.43	21.97	21.07	0.06%	-0.06
Bank of Ireland	1,055	790	265	34%	10,501.04	4,985.31	667.04	12.56%	1.17
Barlo Group	90	91	-1	-1%	153.77	89.28	97.72	0.18%	0.07
Bula Resources - Units of 10 shares (See Note 1)	39	65	-26	-40%	84.41	87.73	718.39	0.10%	0.54
CRH	1,982	2,140	-158	-7%	8,171.48	3,693.07	200.49	9.78%	0.85
Crean (James)	29	35	-6	-17%	13.09	11.88	41.43	0.02%	0.28
DCC	1,140	740	400	54%	973.49	646.78	63.80	1.16%	0.29
Donegal Creameries	200	175	25	14%	20.07	1.48	0.77	0.02%	0.05
Dragon Oil	33	27	6	22%	114.56	1.83	5.89	0.14%	0.04
Dunloe Ewart	42	40	2	5%	162.75	155.09	330.44	0.19%	0.09
Eircom	270	425	-155	-36%	5,961.13	1,722.41	503.04	7.13%	1.23
Elan Corporation	5,180	2,855	2,325	81%	16,512.31	1,435.61	25.63	19.76%	2.06
FBD Holdings	450	520	-70	-13%	187.69	8.49	1.82	0.22%	0.08
First Active	220	200	20	10%	310.87	72.57	33.97	0.37%	0.08
Fyffes	100	200	-100	-50%	293.55	827.58	432.96	0.35%	0.33
Glanbia	56	117	-61	-52%	163.81	37.58	56.18	0.20%	0.46
Golden Vale	96	110	-14	-13%	152.75	56.24	51.87	0.18%	0.20
Grafton Group	2,190	2,250	-60	-3%	378.05	158.55	6.97	0.45%	0.06
Green Property	710	565	145	26%	747.41	500.12	80.16	0.89%	0.01
Greencore Group	280	305	-25	-8%	539.87	482.39	168.08	0.65%	0.37
Heiton Holdings	285	322	-37	-11%	137.27	48.19	15.82	0.16%	0.18
IWP International	190	180	10	6%	143.50	67.30	41.06	0.17%	0.29
IAWS Group	700	475	225	47%	816.30	199.06	30.37	0.98%	0.11
ICC Bank	113	113	0	0%	41.75	-	-	0.05%	-0.01
IFG Group	190	90	100	111%	104.50	31.77	20.61	0.13%	-0.10
Independent News & Media (See Note 2)	290	326	-35.5	-11%	1,501.35	1,152.48	209.92	1.80%	0.68
Ire-Tex Group	33	38	-5	-13%	11.18	0.80	1.82	0.01%	0.02
Irish Continental Group	620	1,020	-400	-39%	163.79	102.24	13.27	0.20%	0.18
Irish Life and Permanent	1,320	940	380	40%	3,723.06	2,940.45	291.35	4.45%	0.61
Jurys Doyle Hotel Group	904	735	169	23%	538.47	194.13	26.41	0.65%	0.14
Kenmare Resources	27	13	14.5	116%	46.05	6.27	26.47	0.06%	-0.18
Kerry Group	1,375	1,190	185	16%	2,365.65	651.63	47.62	2.83%	0.27
Kingspan Group	380	300	80	27%	639.39	297.75	95.30	0.76%	0.05
Marlborough International	140	220	-80	-36%	44.00	28.99	14.61	0.05%	0.32
McInerney Holdings	240	180	60	33%	76.10	23.50	10.74	0.09%	0.18
Norish	125	125	0	0%	10.58	1.49	1.12	0.01%	0.07
Oakhill Group	30	33	-3	-9%	16.93	10.05	32.83	0.02%	0.04
Oglesby & Butler	60	71	-10.5	-15%	7.39	0.66	1.03	0.01%	0.03
Power Leisure	275	-	-	-	129.03	4.53	1.64	0.15%	0.00
Qualceram Shires	239	225	14	6%	50.07	1.77	0.75	0.06%	0.24
Readymix	142	180	-38	-21%	152.23	21.84	16.08	0.18%	0.15
Reflex Group	14	11	3	27%	5.83	2.41	15.57	0.01%	0.49
Ryan Hotels	105	81	24.5	30%	79.88	82.70	81.71	0.10%	0.27
Ryanair Holdings	1,150	1,060	90	8%	4,031.44	1,455.99	124.33	4.82%	1.41
Seafield	15	15	0	0%	9.93	2.75	16.36	0.01%	-0.20
Smurfit (Jefferson) Group	210	300	-90	-30%	2,285.62	1,440.61	640.90	2.73%	0.62
Unidare	235	220	15	7%	46.49	17.63	7.90	0.06%	0.12
United Drug	1,076	720	356	49%	308.75	40.64	4.91	0.37%	-0.02
Waterford Wedgewood	125	101	24	24%	929.31	634.22	544.98	1.11%	0.42
ITEQ MARKET (See Note 4)									
Datalax	630	-	-	-	405.49	24.10	3.50	0.49%	0.00
Horizon Technology Group	680	410	270	66%	428.63	388.84	43.45	0.51%	0.47
Icon	1,800	1716	84	5%	181.97	0.98	0.05	0.21%	0.20
Iona Technologies	7,700	5,075	2,625	52%	1,679.27	140.25	1.88	2.01%	2.48
ITG Group	710	975	-265	-27%	161.19	120.34	10.17	0.19%	0.56
Riverdeep Group	365	-	-	-	704.16	138.32	31.91	0.84%	0.77
Trinity Biotech	290	165	125	76%	103.45	2.74	0.80	0.11%	0.84
EXPLORATION SECURITIES MARKET									
Celtic Resources Holdings	21	9	12	133%	23.30	1.27	6.15		
Ennex International - Units of 10 Shares (See Note 1)	66	85	-19	-22%	16.25	1.85	10.03		
Glencar Mining (See Note 3)	16	38	-22	-58%	15.63	0.90	5.02		
Minmet	28	26	2	8%	131.72	1.08	2.06		
Ormonde Mining - Units of 10 Shares (See Note 1)	20	60	-40	-67%	0.88	0.33	2.52		
Ovoca Resources	28	25	3	12%	7.72	2.99	7.82		
Providence Resources - Units of 10 Shares (See Note 1)	22	16	6	35%	195.04	27.47	356.66		
Tuskar Resources - Units of 10 Shares (See Note 1)	34	40	-6	-15%	39.89	3.52	49.52		
DEVELOPING COMPANIES MARKET									
CPL Resources	85	90	-5	-6%	30.77	3.84	3.69	0.04%	0.30
Rapid Technology Group	105	440	-335	-76%	24.28	3.84	0.97	0.03%	0.28
Sherry Fitzgerald Group	230	197	33	17%	31.26	5.10	2.48	0.04%	-0.10
SMF Technologies	145	90	55	61%	9.01	0.55	0.46	0.01%	0.06

Note 1 : Transactions in these securities are quoted and dealt in units of 10 shares. As a result the price quoted per unit of 10 shares is a multiple of 10 times the price of an individual share. In addition, the volume is in units of 10 shares. Turnover figures are unaffected.

Note 2 : Independent News & Media price (30/12/99) adjusted to reflect a one for one stock split on June 12, 2000.

Note 3 : Glencar Mining price (30/12/99) adjusted to reflect rights issue of one new share for every two held at a price of Eur 0.19 on July 4 2000.

Note 4 : ITEQ Companies are also listed on the Official List.

EXPLORATION SECURITIES MARKET

DEVELOPING COMPANIES MARKET

DEVELOPING COMPANIES MARKET

The Irish Stock Exchange
28 Anglesea Street,
Dublin 2.
Tel : +353 1 6174200
Fax : +353 1 6776045
E - Mail : statistics@ise.ie
Web Address : www.ise.ie

* Weighting shows the percentage of ISEQ Market Capitalisation of each stock.
 ** The beta factor is a measure for the sensitivity of a share to changes in the index, describing to which extent the index-specific performance is reflected by the price of that share.