



# THE IRISH STOCK EXCHANGE

## Annual Statistical Review 2002

SUMMARY OF KEY STATISTICS		2002	2001	2000	1999
<b>MARKET CAPITALISATION</b>		€m	€m	€m	€m
Irish Government Bonds		21,869	18,812	20,750	16,797
Official List - Included in ISEQ		52,234	78,633	79,851	70,853
- Not Included in ISEQ		114,356	110,318	113,816	66,433
<i>ITEQ</i> (See Note 1)		834	1,938	3,664	N/A
Exploration Securities Market		24	144	499	419
Developing Companies Market		41	34	95	192
Covered Warrants (See Note 4)		197			
<b>NUMBER OF COMPANIES (Domestic &amp; Foreign)</b>					
Official List		59	67	76	85
<i>ITEQ</i> (See Note 1)		8	8	7	N/A
Exploration Securities Market		5	8	9	11
Developing Companies Market		4	4	4	5
Total		76	87	96	101
<b>MONEY RAISED (Domestic)</b>		€m	€m	€m	€m
Net Irish Government Bond Issues / (Redemptions)		6,600	(2,106)	(1,983)	(421)
Equity Issues : (See Note 2)					
Official List		1,635	4,239	5,192	4,957
<i>ITEQ</i> (See Note 1)		0	213	656	N/A
Exploration Securities Market		1	41	30	34
Developing Companies Market		0	1	1	35
No. Companies Raising Funds		35	57	48	65
Corporate Bond Issues		0	993	2,060	1,301
No. Companies Raising Funds		0	3	4	9
<b>TURNOVER</b>		€m	€m	€m	€m
Irish Government Bonds		93,470	43,590	44,903	110,917
Official List, <i>ITEQ</i> , ESM & DCM (See Note 3)		70,255	51,042	31,463	93,461
Covered Warrants (See Note 4)		2			
<b>ISEQ OVERALL INDEX</b>					
ISEQ Overall Index		3,995.03	5,707.00	5,722.53	5,017.54
% Change (on year)		-30.00%	-0.27%	14.05%	0.43%
ISEQ Overall Total Return Index		6,034.08	8,426.72	8,297.10	7,169.37
<b>ENTRANTS, TRANSFERS AND DEPARTURES</b>					
<b>NEW COMPANIES ENTERING THE MARKETS</b>		0	2	3	8
<b>DEPARTURES FROM MARKETS</b>					
<i>Company</i>			<i>Departure From</i>		<i>Date</i>
Ivernia West Inc.			ESM		23-Jan-02
Capital Bars Plc			OL		05-Feb-02
Govett European Technology & Income Trust			OL		31-May-02
Lamont Holdings Plc			OL		20-Jun-02
Bioglan Pharma Plc			OL		13-Aug-02
Marlborough International Plc			OL		16-Sep-02
Green Property Plc			OL		20-Sep-02
Smurfit (Jefferson) Group Plc			OL		02-Oct-02
Celtic Resources Holdings Plc			ESM		14-Oct-02
Ennex International Plc			ESM		01-Nov-02
Bula Resources (Holdings) Plc			OL		06-Dec-02
<b>NEW FUNDS / SPECIALIST SECURITIES ENTERING THE MARKETS</b>					
UCITS & Investment Funds (Including Umbrella Funds listed for the first time)		359	317	207	171
- Sub Funds		494	400	318	252
Specialist Securities - Asset Backed , Bonds, Other		376	239	91	26

**Note 1 :** *ITEQ*, the Irish Stock Exchange's specialist technology market, commenced on 8 September 2000. With the exception of Conduit Plc, *ITEQ* companies are also listed on the Official List.

*ITEQ* figures are not included in Official List totals.

**Note 2 :** In line with the Federation of European Stock Exchanges (FESE), Equity money raised figures for 2002, 2001 & 2000, are based on market price on date of issue. The figures are the aggregate of both new and existing shares introduced to the market. 1999 figures are based on net proceeds received.

**Note 3 :** Equity turnover for 2002, 2001 & 2000 is calculated using a trading based methodology. Turnover for 1999 is calculated based on transaction data provided by the CREST settlement system (settlement based methodology). 1999 turnover includes domestic companies only while 2002, 2001 & 2000 turnover includes both domestic and foreign companies.

**Note 4 :** A new market in Covered Warrants was introduced on 22 October 2002.

# THE IRISH STOCK EXCHANGE

# Annual Statistical Review 2002

## ISEQ INDICES 2002

Month End	Overall Mkt. Cap.* €m	ISEQ Overall	ISEQ Financial	ISEQ General	ISEQ Small Cap	ITEQ
31-Dec-01	80,605	5,707.00	8,034.73	4,566.14	1,096.68	509.06
31-Jan-02	74,832	5,292.37	8,392.56	3,958.14	1,137.31	528.85
28-Feb-02	70,421	4,959.61	8,416.08	3,547.33	1,119.26	493.68
28-Mar-02	73,739	5,186.57	9,280.54	3,570.13	1,157.55	515.46
30-Apr-02	73,321	5,146.72	9,711.59	3,396.90	1,235.98	448.78
31-May-02	74,818	5,237.94	10,210.60	3,362.32	1,255.30	411.08
28-Jun-02	67,751	4,743.45	9,271.73	3,037.61	1,193.76	312.50
31-Jul-02	60,607	4,243.39	8,484.33	2,662.17	1,079.51	237.08
30-Aug-02	61,883	4,400.98	8,906.83	2,732.20	1,084.79	224.29
30-Sep-02	51,015	3,838.52	7,808.99	2,363.23	1,022.12	170.42
31-Oct-02	56,073	4,219.27	8,879.45	2,498.79	1,028.33	179.80
29-Nov-02	58,736	4,419.56	8,784.56	2,789.86	1,050.56	227.50
31-Dec-02	53,034	3,995.03	7,986.02	2,506.68	1,059.82	208.54
<b>High 2002</b>		5,714.87	10,335.85	4,555.70	1,256.03	584.19
<b>Date</b>		17-Jan-02	29-May-02	17-Jan-02	31-May-02	08-Jan-02
<b>Low 2002</b>		3,616.99	7,264.49	2,236.27	962.27	158.83
<b>Date</b>		10-Oct-02	10-Oct-02	10-Oct-02	10-Oct-02	01-Oct-02

\* Market Capitalisation = Official List + Developing Companies Market + ITEQ equities included in the ISEQ Index.

## ISEQ TOTAL RETURN INDICES 2002

Month End	Return Overall	Return Financial	Return General	Return Small Cap	ITEQ
31-Dec-01	8,426.72	14,690.84	5,990.65	1,197.37	509.06
31-Jan-02	7,816.96	15,345.14	5,195.62	1,245.12	528.85
28-Feb-02	7,354.68	15,519.99	4,660.27	1,225.60	493.68
28-Mar-02	7,703.42	17,113.13	4,702.46	1,271.63	515.46
30-Apr-02	7,665.19	17,961.23	4,485.78	1,364.40	448.78
31-May-02	7,807.43	18,892.60	4,445.18	1,386.94	411.08
28-Jun-02	7,095.90	17,271.16	4,019.56	1,320.29	312.50
31-Jul-02	6,350.37	15,804.71	3,525.36	1,198.76	237.08
30-Aug-02	6,609.25	16,681.44	3,624.34	1,207.07	224.29
30-Sep-02	5,774.05	14,628.51	3,145.00	1,141.66	170.42
31-Oct-02	6,352.35	16,656.23	3,326.59	1,149.27	179.80
29-Nov-02	6,654.13	16,477.32	3,714.59	1,173.76	227.50
31-Dec-02	6,034.08	15,059.96	3,340.52	1,185.88	208.54
<b>High 2001</b>	8,364.98	19,097.02	5,908.44	1,386.94	577.84
<b>Date</b>	07-Jan-02	15-May-02	17-Jan-02	31-May-02	08-Jan-02
<b>Low 2001</b>	5,445.55	13,695.43	2,989.97	1,083.20	161.55
<b>Date</b>	09-Oct-02	09-Oct-02	09-Oct-02	10-Oct-02	10-Oct-02

## EQUITY TURNOVER (OL, ESM, DCM, ITEQ)

	2002 €m	2001 €m	2000 €m	1999 €m
January	5,128.73	3,893.79	2,331.82	8,911.64
February	5,543.92	3,906.40	2,885.77	7,817.00
March	4,690.92	5,030.36	3,013.69	6,014.06
April	4,816.40	3,401.54	2,156.90	7,504.33
May	6,293.52	4,350.34	2,407.38	6,148.38
June	6,832.66	5,003.40	2,202.10	7,340.35
July	8,385.87	4,063.61	1,763.07	17,431.61
August	5,434.82	4,153.26	2,168.29	5,865.82
September	5,341.49	5,015.21	3,190.25	7,487.25
October	7,402.03	4,375.26	2,514.84	5,844.14
November	5,554.26	4,511.27	4,340.55	7,181.19
December	4,830.26	3,337.11	2,488.42	5,915.70
<b>Total</b>	<b>70,254.89</b>	<b>51,041.55</b>	<b>31,463.06</b>	<b>93,461.47</b>
<b>Daily Average:</b>	<b>277.69</b>	<b>201.75</b>	<b>125.85</b>	<b>373.85</b>

Equity turnover for the years 2002, 2001 & 2000 is calculated using a trading based methodology. 1999 Turnover was calculated based on transaction data provided by the CREST settlement system (settlement based methodology). 1999 turnover includes domestic companies only while 2002, 2001 & 2000 turnover includes both domestic and foreign companies.

## IRISH GOVERNMENT BOND TURNOVER

	2002 €m	2002 Volume	2001 €m	2000 €m	1999 €m
January	36,202.59	37,417.03	5,133.83	3,151.91	4,958.54
February	6,985.07	7,159.04	3,854.54	2,694.95	5,238.39
March	5,348.42	5,548.60	4,212.00	3,725.98	4,925.43
April	5,050.53	5,218.69	3,615.59	3,610.90	4,645.84
May	4,345.98	4,514.40	2,872.26	4,786.35	67,720.04
June	3,899.20	3,996.08	3,217.55	3,532.67	4,452.35
July	6,518.61	6,622.50	2,749.37	5,494.31	4,117.71
August	4,603.95	4,596.42	2,979.41	3,141.52	2,497.56
September	6,127.40	6,011.98	3,914.18	4,474.22	2,610.09
October	6,132.06	6,124.39	5,785.60	4,101.22	2,932.43
November	4,816.34	4,749.33	3,470.40	3,630.41	4,039.64
December	3,439.49	3,372.22	1,785.16	2,558.78	2,779.01
<b>Total</b>	<b>93,469.63</b>	<b>95,330.68</b>	<b>43,589.89</b>	<b>44,903.22</b>	<b>110,917.03</b>
<b>Daily Average:</b>	<b>369.45</b>	<b>376.80</b>	<b>172.29</b>	<b>179.61</b>	<b>443.67</b>

## MONEY RAISED (EQUITIES)

	2002 €m	2001 €m	2000 €m	1999 €m
<b>Domestic</b>				
Money Raised	1,635	4,494	5,878	5026
No. of Companies				
Raising Funds	35	57	48	65

In line with FESE standards, Equity money raised figures for the year 2002, 2001 & 2000 are based on market price on date of issue. 1999 figures are based on net proceeds received.

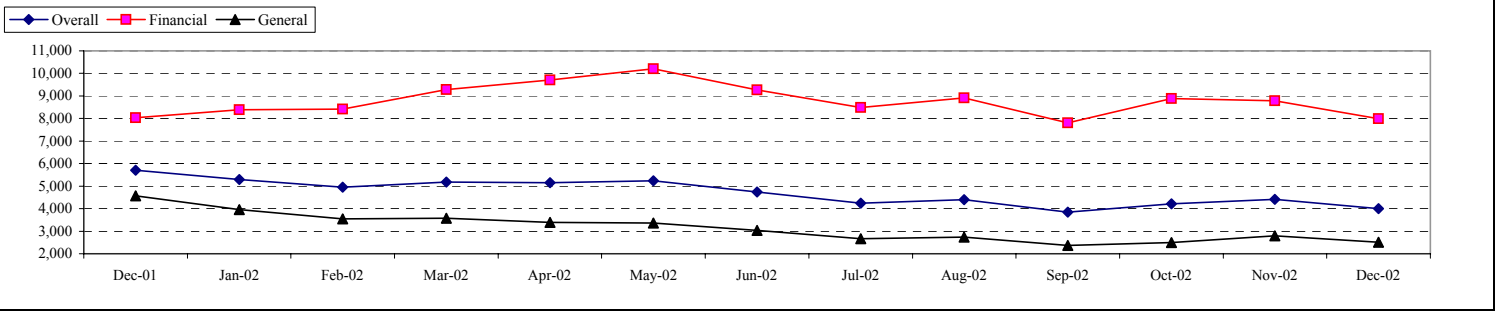
## MONEY RAISED (CORPORATE BONDS)

	2002 €m	2001 €m	2000 €m	1999 €m
<b>Domestic</b>				
Money Raised	0	993	2,060	1,301
No. of Companies				
Raising Funds	0	3	4	9

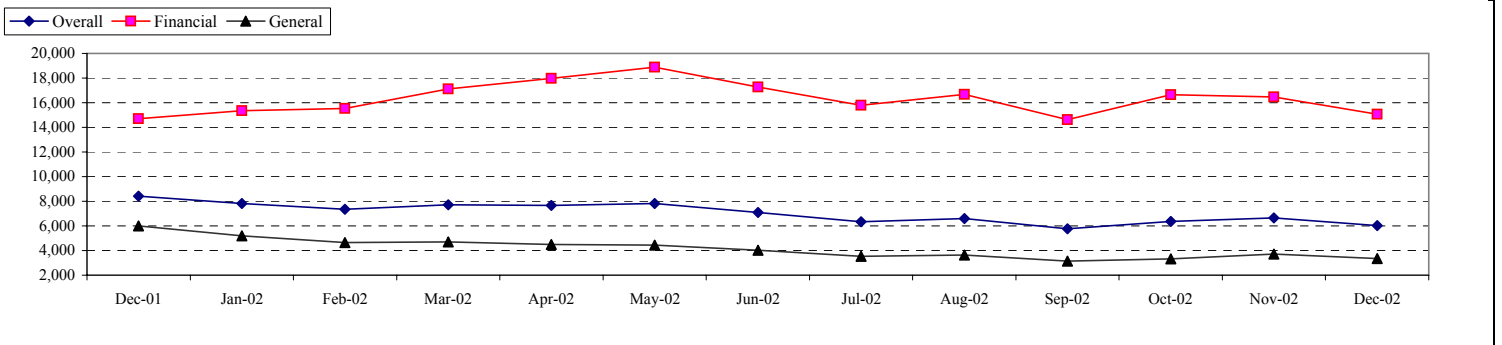
## NUMBER OF FUNDS / SPECIALIST SECURITIES 31 DECEMBER 2002

UCITS & Investment Funds (Including Umbrella Funds)	1,393
- Sub Funds	1,667
Specialist Securities - Asset Backed, Bonds, Other	799

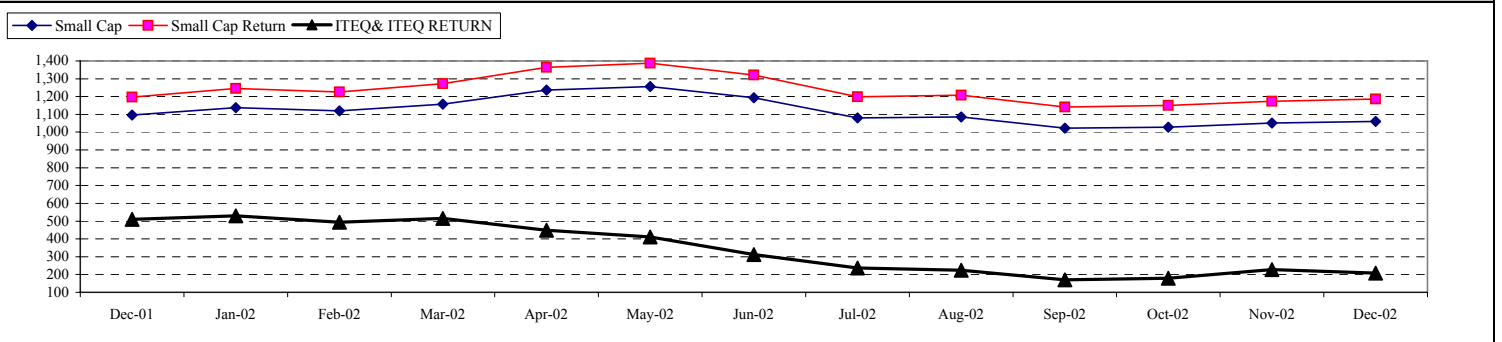
## ISEQ OVERALL, FINANCIAL & GENERAL INDICES 2002



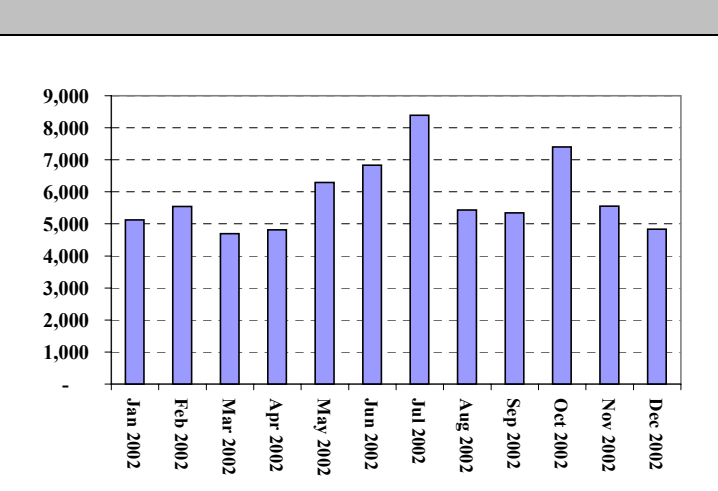
## ISEQ OVERALL, FINANCIAL & GENERAL RETURN INDICES 2002



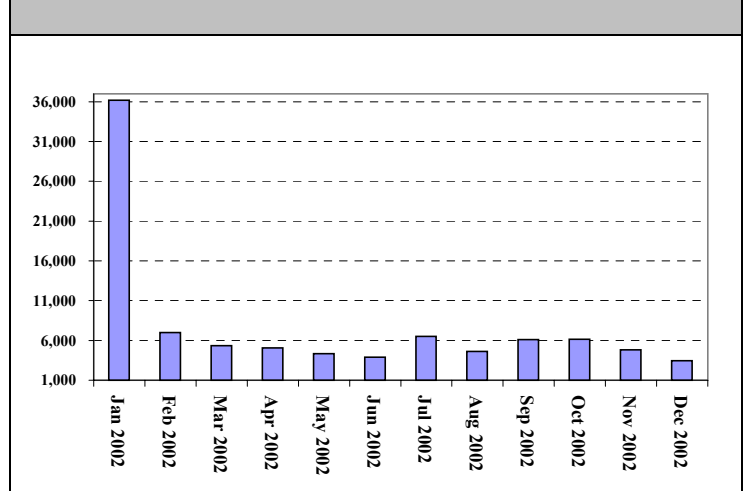
## ISEQ SMALL CAP & ITEQ INDICES 2002



## EQUITY TURNOVER (€m) 2002



## IRISH GOVERNMENT BOND TURNOVER (€m) 2002



**INDIVIDUAL COMPANY DATA 2002**

<b>OFFICIAL LIST (See Note 1)</b>	<b>Share Price (€) 31-Dec-02</b>	<b>Share Price (€) 31-Dec-01</b>	<b>Absolute Change 2002</b>	<b>% Change 2002</b>	<b>Market Cap. €m 31-Dec-02</b>	<b>Market Turnover €m 2002</b>	<b>Volume 2002</b>	<b>ISEQ * Weighting 31-Dec-02</b>	<b>ISEQ ** Beta Coef 2002</b>
Abbey	460	388	72	19%	156.76	73.32	17.32	0.30%	0.21
Allied Irish Banks	1,286	1,300	-14	-1%	11,537.48	12,223.61	932.75	21.76%	1.13
Aminex	19	39	-20	-51%	17.14	0.21	0.63	0.03%	0.34
Anglo Irish Bank Corporation	678	435	243	56%	2,205.33	4,326.43	723.89	4.16%	0.86
Arcon International Resources (See Note 2)	4	4.8	-0.8	-17%	63.25	5.70	180.20	0.12%	-1.16
Ardagh	125	110	15	14%	43.28	8.98	8.48	0.08%	0.02
Arnotts	1,160	690	470	68%	206.43	32.33	3.33	0.39%	0.09
Bank of Ireland	975	1,042	-67	-6%	9,833.37	14,423.05	1,281.13	18.54%	1.22
Barlo Group	25	27	-2	-7%	43.76	23.58	105.42	0.08%	0.03
CRH	1,175	1,983	-808	-41%	6,159.41	8,603.64	547.97	11.61%	0.88
DCC	980	1,205	-225	-19%	819.34	949.15	86.93	1.54%	0.35
Donegal Creameries	216	240	-24	-10%	21.67	7.17	3.25	0.04%	-0.05
Dragon Oil	17	42	-25	-60%	61.57	2.04	8.81	0.12%	0.34
Dunloe Ewart	47	31	16	52%	182.32	95.23	244.93	0.34%	0.30
Elan Corporation	205	5,200	-4995	-96%	717.72	1,412.36	140.85	1.35%	3.30
FBD Holdings	555	520	35	7%	227.31	39.42	7.46	0.43%	-0.00
First Active	540	330	210	64%	766.94	415.21	90.04	1.45%	0.39
Fyffes	132	130	2	2%	455.99	602.70	442.84	0.86%	0.27
Galen Holdings	764	1,095	-331	-30%	1,403.53	317.50	42.46	2.65%	0.66
Glanbia	149	133	16	12%	435.85	173.47	118.25	0.82%	0.17
Grafton Group	360	325	35	11%	634.02	762.77	193.32	1.20%	0.40
Greencore Group	255	280	-25	-9%	479.62	517.63	178.30	0.90%	0.29
Gresham Hotel Group	57	79	-22	-28%	45.05	38.71	45.16	0.08%	0.17
Heiton Holdings	220	285	-65	-23%	108.03	83.90	29.65	0.20%	0.51
IWP	40	203	-163	-80%	29.58	44.46	39.30	0.06%	0.03
IAWS Group	751	837	-86	-10%	923.71	662.82	81.16	1.74%	0.18
IFG Group	39	335	-296	-88%	25.30	115.23	57.91	0.05%	0.45
Independent News & Media	155	210	-55	-26%	892.11	721.06	425.72	1.68%	0.68
Irish Continental Group	712	640	72	11%	176.89	174.22	24.65	0.33%	0.23
Irish Life and Permanent	1,030	1,140	-110	-10%	2,770.89	6,090.09	466.14	5.22%	0.77
Jurys Doyle Hotel Group	720	810	-90	-11%	451.25	433.79	48.94	0.85%	0.33
Kenmare Resources	17	23	-6	-26%	44.58	5.17	21.98	0.08%	0.25
Kerry Group	1,275	1,365	-90	-7%	2,364.72	1,554.58	106.51	4.46%	0.21
Kingspan Group	163	330	-167	-51%	266.96	472.18	203.86	0.50%	0.64
McInerney Holdings	215	135	80	59%	70.14	40.73	19.31	0.13%	0.61
Norish	90	48	42	88%	7.62	3.32	5.38	0.01%	0.24
Oakhill Group	7	12	-5	-42%	3.95	1.28	16.15	0.01%	0.86
Oglesby & Butler	49	38	11	29%	6.03	0.12	0.29	0.01%	0.16
Power Leisure	508	400	108	27%	239.49	287.97	59.30	0.45%	0.25
Qualceram Shires	100	250	-150	-60%	22.17	6.34	4.41	0.04%	0.20
Readymix	120	128	-8	-6%	129.58	28.13	18.73	0.24%	0.24
Ryanair Holdings	675	710	-35	-5%	5,091.63	5,121.15	798.30	9.46%	1.11
Ulster Television	551	454	97	21%	289.53	2.90	0.52	0.55%	0.01
Unidare	110	120	-10	-8%	21.76	4.88	4.51	0.04%	0.26
United Drug	1,240	1,480	-240	-16%	362.33	294.50	21.76	0.68%	0.14
Viridian Group	787	800	-13	-2%	1,039.68	18.04	2.30	1.96%	-0.06
Waterford Wedgwood	49	88	-39	-44%	379.36	409.32	717.33	0.72%	0.81

**ITEQ MARKET (See Note 1)**

Alphya Group	255	375	-120	-32%	83.46	103.81	53.98	0.16%	1.10
Conduit (See Note 3)	240	292	-52	-18%	41.67	9.27	4.19	0.08%	0.16
Datalex	40	35	5	14%	26.22	6.27	19.50	0.05%	0.11
Horizon Technology Group	35	56	-21	-38%	23.77	5.68	16.42	0.04%	-0.23
Icon	2,550	3,230	-680	-21%	291.71	4.59	0.18	0.55%	0.11
Iona Technologies	240	2,325	-2085	-90%	76.90	52.42	8.03	0.15%	1.29
Riverdeep Group	120	325	-205	-63%	239.35	563.40	254.30	0.45%	0.74
Trinity Biotech	130	170	-40	-24%	50.72	0.03	0.02	0.10%	-0.16

**EXPLORATION SECURITIES MARKET**

Glencar Mining	1	2	-1	-50%	0.98	0.42	16.06		
Minmet	2	17	-15	-88%	9.95	0.33	3.10		
Ormonde Mining - Units of 10 Shares (See Note 4)	40	45	-5	-11%	3.13	2.15	3.52		
Ovoca Resources	15	12	3	25%	4.36	1.58	8.47		
Providence Resources - Units of 10 Shares (See Note 4)	6	11	-5	-45%	5.32	1.18	14.44		

**DEVELOPING COMPANIES MARKET (See Note 1)**

CPL Resources	45	30	15	50%	16.29	0.81	2.05	0.03%	-0.09
Rapid Technology Group	15	30	-15	-50%	3.47	0.56	2.60	0.01%	-0.18
Sherry Fitzgerald Group	142	96	46	48%	18.25	3.48	2.89	0.03%	0.20
SMF Technologies	40	40	0	0%	2.73	0.00	0.00	0.01%	0.00

**Note 1 :** Domestic and Northern Ireland registered companies included in the ISEQ Indices.

**Note 2 :** Arcon International resources price (31 Dec 2001) adjusted to reflect a rights issue at Euro 0.025 per share on the basis of 4 new ordinary share for every 1 existing ordinary shares.

**Note 3 :** With the exception of Conduit Plc, all ITEQ Companies are also listed on the Official List.

**Note 4 :** Transactions in these securities are quoted and dealt in units of 10 shares. As a result the price quoted per unit of 10 shares is a multiple of 10 times the price of an individual share. In addition, the volume is in units of 10 shares. Turnover figures are unaffected.

**The Irish Stock Exchange**  
**28 Anglesea Street,**  
**Dublin 2.**  
**Tel : +353 1 6174200**  
**Fax : +353 1 6776045**  
**E - Mail : statistics@ise.ie**  
**Web Address : www.ise.ie**