

SUMMARY OF KEY STATISTICS	2007	2006	2005	2004	2003
<b>MARKET CAPITALISATION</b>	€m	€m	€m	€m	€m
Irish Government Bonds	31,190	32,413	33,062	33,031	29,557
Official List - Included in ISEQ®	90,460	116,987	93,925	80,868	62,548
- Not Included in ISEQ®	80,678	80,010	97,146	96,946	95,056
- ISEQ® 20 ETF	68	51	29	n/a	n/a
<i>IEX</i> (See Note 1)	3,083	2,464	850	n/a	n/a
ITEQ	n/a	n/a	n/a	691	840
Exploration Securities Market	n/a	n/a	n/a	130	125
Developing Companies Market	n/a	n/a	n/a	361	49
<b>NUMBER OF COMPANIES (Domestic &amp; Foreign)</b>					
Official List	43	45	53	52	54
ITEQ	n/a	n/a	n/a	5	5
Exploration Securities Market	n/a	n/a	n/a	5	5
Developing Companies Market	n/a	n/a	n/a	3	2
<i>IEX</i> (See Note 1)	30	23	13		
Total	73	68	66	65	66
<b>MONEY RAISED (Domestic)</b>	€m	€m	€m	€m	€m
Net Irish Government Bond Issues / (Redemptions)	5,959	-	1,440	2,837	6,570
Equity Issues : (See Note 2)					
Official List	5,376	2,761	1,435	2,543	721
ITEQ	n/a	n/a	n/a	0	0
Exploration Securities Market	n/a	n/a	n/a	47	26
Developing Companies Market	n/a	n/a	n/a	0	2
<i>IEX</i> (See Note 1)	1,241	941	132	n/a	n/a
No. Companies Raising Funds	38	37	38	39	35
<b>TURNOVER</b>	€m	€m	€m	€m	€m
Irish Government Bonds	51,994	37,457	51,297	72,333	74,461
Official List, <i>IEX</i>	198,566	128,961	108,651	72,508	77,516
ISEQ® 20 ETF	607	285	180	n/a	n/a
<b>ISEQ® EQUITY OVERALL INDEX</b>					
ISEQ® Overall Index	6,934.35	9,408.12	7,363.96	6,197.83	4,920.73
% Change (on year)	-26%	28%	19%	26%	23.17%
ISEQ® Overall Total Return Index	11,856.38	15,711.46	12,023.04	9,879.38	7,652.33
% Change (on year)	-25%	31%	22%	29%	27%
<b>ISEQ® ALL BOND INDEX</b>					
ISEQ® Overall Index	98.84	101.08	105.80	104.32	99.81
% Change (on year)	-2%	-4%	1%	5%	
ISEQ® Overall Total Return Index	114.17	111.85	112.24	106.42	97.79
% Change (on year)	2%	-0.40%	5%	9%	
<b>MEMBER FIRMS</b>					
No. ISE Member Firms	32	30	28	24	22
% Change (on year)	7%	7%	17%	9%	
<b>FUNDS/SPECIALIST DEBT</b>					
Investment Funds	1,918	1,897	1,902	1,804	1,549
-Subfunds	2,575	2,436	2,284	2,249	1,884
-Fund Classes	10,210	9,630	8,829	7,816	6,266
Specialist Securites -Asset Backed, Bonds, Other	3,867	2,883	1,541	1,054	707
of which are Programmes	614	479	354	162	103
-Tranches	24,273	16,385	9,728	6,142	3,676

**Note 1 :** *IEX*, the Irish Stock Exchange's market for small to mid-sized companies commenced on 12 April 2005. All eight companies previously quoted on the ESM and the DCM transferred to *IEX* on 12 April 2005.

**Note 2 :** Money raised figures includes all domestic companies and companies who have their centre of economic interest in Ireland

ENTRANTS, TRANSFERS AND DEPARTURES	2007	2006	2005	2004	2003
------------------------------------	------	------	------	------	------

<b>NEW COMPANIES ENTERING THE MARKETS</b>	9	10	5	2	0
---	---	----	---	---	---

### ENTRANTS TO MARKETS

Company	Market	Date
Total Produce Plc	IEX	02-Jan-07
Zamano Plc	IEX	26-Feb-07
Smurfit Kappa Grp Plc	OL	14-Mar-07
Boundary Capital Plc	IEX	15-May-07
Origin Enterprises Plc	IEX	05-Jun-07
First Derivatives Plc	IEX	08-Jun-07
Andor Technology Plc	IEX	29-Jun-07
TVC Holdings Plc	IEX	11-Jul-07
Merrion Pharmaceuticals Plc	IEX	13-Dec-07

### DEPARTURES FROM MARKETS

Company	Departure From	Date
South Wharf Plc	OL	30-Jan-07
Calyx Group Plc	IEX	26-Jul-07
Minmet Plc	IEX	24-Sep-07
Trinity Biotech Plc	OL	05-Nov-07

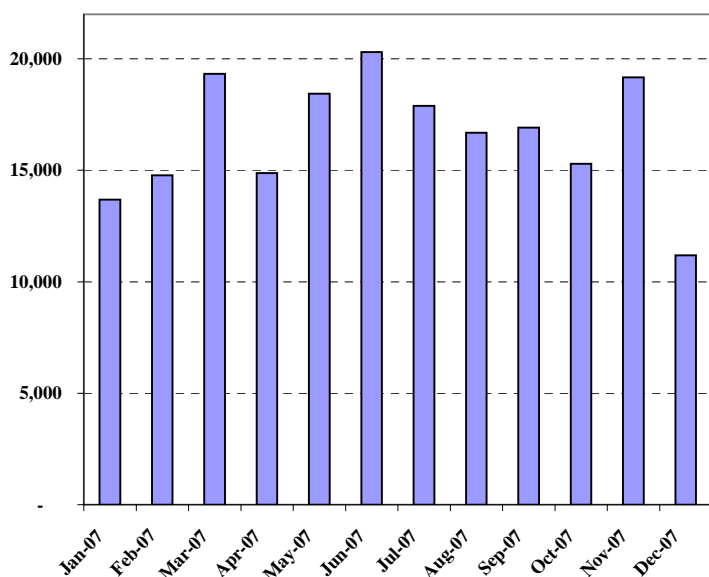
### TRANSFERS BETWEEN MARKETS

Company	Departure From	Entry to	Date
Fyffes Plc	OL	IEX	10-Jan-07

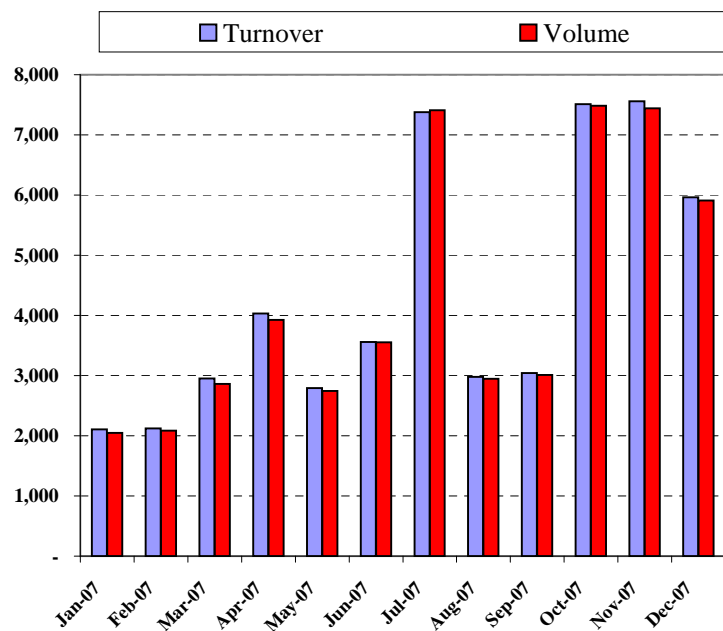
### NEW FUNDS / SPECIALIST SECURITIES ENTERING THE MARKETS

Investment Funds & UCITS (Including Umbrella Funds))	311	256	342	426	284
- Sub Funds	449	373	348	563	390
- Fund Classes	3,732	3,481	3,361	3,268	2,304
Specialist Securities - Asset Backed , Bonds, Other	984	988	588	406	305
of which are Programmes	135	125	95	59	61
- Tranches	10012	7,883	4,148	2,719	1,645

### EQUITY TURNOVER (€m) 2007



### IRISH GOVERNMENT BOND TURNOVER (€m) 2007



# THE IRISH STOCK EXCHANGE

## Annual Statistical Review 2007



Irish Stock Exchange

### ISEQ® EQUITY INDICES 2007

Month End	Overall Mkt. Cap.* €m	ISEQ® Overall	ISEQ® Financial	ISEQ® General	ISEQ® Small Cap	ITEQ	ISEQ® 20
29-Dec-06	119,312	9,408	16,864	6,545	4,202	467	1,486
31-Jan-07	116,911	9,205	16,574	6,379	4,296	472	1,446
28-Feb-07	120,221	9,409	16,857	6,548	4,355	486	1,478
30-Mar-07	123,916	9,375	16,398	6,650	4,400	520	1,467
30-Apr-07	125,369	9,470	16,356	6,784	4,366	535	1,481
31-May-07	130,611	9,855	16,751	7,145	4,524	545	1,551
29-Jun-07	124,145	9,306	15,107	6,995	4,549	516	1,461
31-Jul-07	114,611	8,563	14,101	6,363	4,347	523	1,338
31-Aug-07	112,116	8,401	13,888	6,222	4,017	496	1,316
28-Sep-07	105,305	7,884	12,898	5,888	3,816	524	1,230
31-Oct-07	105,868	7,911	12,534	6,061	3,916	560	1,227
30-Nov-07	96,412	7,207	11,326	5,556	3,455	530	1,112
31-Dec-07	93,341	6,934	10,886	5,351	3,378	590	1,069
<b>% Chg 2007</b>		<b>-26%</b>	<b>-35%</b>	<b>-18%</b>	<b>-20%</b>	<b>26%</b>	<b>-28%</b>
<b>High 2007</b>		10,041.27	18,097.76	7,280.74	4,613.76	601.87	1,585.46
<b>Date</b>		21-Feb-07	21-Feb-07	01-Jun-07	05-Jun-07	24-Dec-07	21-Feb-07
<b>Low 2007</b>		6,281.22	9,138.03	5,108.48	3,253.33	463.46	967.54
<b>Date</b>		22-Nov-07	22-Nov-07	22-Nov-07	19-Dec-07	09-Jan-07	22-Nov-07

### ISEQ® TOTAL RETURN EQUITY INDICES 2007

Month End	Return Overall	Return Financial	Return General	Return Small Cap	ITEQ	ISEQ® 20
29-Dec-06	15,711	36,592	9,319	5,047	467	1,558
31-Jan-07	15,374	35,961	9,084	5,160	472	1,516
28-Feb-07	15,714	36,576	9,325	5,232	486	1,549
30-Mar-07	15,751	35,850	9,512	5,291	520	1,548
30-Apr-07	15,941	35,842	9,719	5,258	535	1,566
31-May-07	16,605	36,738	10,249	5,448	545	1,642
29-Jun-07	15,750	33,475	10,034	5,478	516	1,553
31-Jul-07	14,493	31,247	9,128	5,236	523	1,423
31-Aug-07	14,255	30,937	8,929	4,839	496	1,403
28-Sep-07	13,400	28,734	8,475	4,605	524	1,313
31-Oct-07	13,463	27,962	8,734	4,735	560	1,312
30-Nov-07	12,306	25,455	8,011	4,179	530	1,193
31-Dec-07	11,856	24,534	7,717	4,086	590	1,149
<b>% Chg 2007</b>	<b>-25%</b>	<b>-33%</b>	<b>-17%</b>	<b>-19%</b>	<b>26%</b>	<b>-26%</b>
<b>High 2007</b>	16,788.30	38,951.39	10,423.78	5,478.06	601.87	1,659.81
<b>Date</b>	01-Jun-07	21-Feb-07	01-Jun-07	29-Jun-07	24-Dec-07	01-Jun-07
<b>Low 2007</b>	10,828.66	20,713.82	7,451.77	3,950.05	465.40	1,048.33
<b>Date</b>	22-Nov-07	22-Nov-07	22-Nov-07	19-Dec-07	12-Jan-07	22-Nov-07

\* Constitits Market Cap = Official List + Irish Enterprise Exchange equities included in the ISEQ® Index.

### ISEQ® BOND INDICES 2007

Month End	All Bond Mkt. Cap.* €m	ISEQ® All Bond	ISEQ® Under 3	ISEQ® Under 5	ISEQ® Under 10	ISEQ® 5 Plus	ISEQ® 10 Plus
29-Dec-06	32,155	101.08	95.84	97.86	98.86	103.51	106.10
31-Jan-07	32,251	100.22	95.72	97.73	98.27	102.20	104.35
28-Feb-07	32,302	101.00	95.91	97.94	98.84	103.34	105.82
30-Mar-07	31,921	100.21	95.69	97.69	98.26	102.20	104.33
30-Apr-07	31,579	99.74	95.67	97.65	97.90	101.46	103.49
31-May-07	31,225	98.38	95.35	97.33	96.89	99.44	100.94
29-Jun-07	31,006	97.80	95.34	97.31	96.51	98.50	99.65
31-Jul-07	31,338	98.39	95.46	97.44	96.92	99.38	100.86
31-Aug-07	31,307	98.73	95.69	97.67	97.35	99.80	100.91
28-Sep-07	25,118	98.68	95.86	97.84	97.36	99.59	100.59
31-Oct-07	31,305	99.21	95.79	97.77	97.62	100.25	101.52
30-Nov-07	31,466	99.80	96.16	98.14	98.32	100.90	101.96
31-Dec-07	31,183	98.84	95.92	97.90	97.49	99.77	100.84
<b>% Chg 2007</b>	<b>-2.21%</b>	<b>0.09%</b>	<b>0.04%</b>	<b>-1.39%</b>	<b>-3.62%</b>	<b>-4.96%</b>	
<b>High 2007</b>		101.17	96.27	98.27	98.97	103.65	106.26
<b>Date</b>		05-Jan-07	22-Nov-07	22-Nov-07	05-Mar-07	14-Mar-07	05-Jan-07
<b>Low 2007</b>		97.19	95.26	97.23	96.07	97.56	98.47
<b>Date</b>		06-Jul-07	06-Jul-07	06-Jul-07	06-Jul-07	06-Jul-07	18-Jun-07

### ISEQ® TOTAL RETURN BOND INDICES 2007

Month End	ISEQ® All Bond	ISEQ® Under 3	ISEQ® Under 5	ISEQ® Under 10	ISEQ® 5 Plus	ISEQ® 10 Plus
29-Dec-06	111.85	105.93	107.38	109.27	115.18	117.71
31-Jan-07	111.34	106.16	107.60	109.04	114.21	116.28
28-Feb-07	112.54	106.68	108.13	110.00	115.82	118.23
30-Mar-07	112.07	106.76	108.21	109.74	115.01	117.03
30-Apr-07	111.95	107.07	108.51	109.73	114.63	116.55
31-May-07	110.84	107.06	108.51	109.00	112.79	114.11
29-Jun-07	110.57	107.37	108.82	108.94	112.15	113.08
31-Jul-07	111.64	107.86	109.31	109.81	113.60	114.89
31-Aug-07	112.42	108.45	109.91	110.66	114.51	115.37
28-Sep-07	112.74	108.94	110.41	111.04	114.67	115.41
31-Oct-07	113.76	109.19	110.67	111.75	115.90	116.93
30-Nov-07	114.83	109.91	111.38	112.91	117.06	117.86
31-Dec-07	114.17	109.95	111.43	112.38	116.22	117.02
<b>% Chg 2007</b>	<b>2.08%</b>	<b>3.80%</b>	<b>3.77%</b>	<b>2.84%</b>	<b>0.90%</b>	<b>-0.59%</b>
<b>High 2007</b>	115.44	110.00	111.48	113.33	117.80	118.84
<b>Date</b>	27-Nov-07	05-Dec-07	27-Nov-07	27-Nov-07	27-Nov-07	14-Mar-07
<b>Low 2007</b>	109.85	105.99	107.44	108.42	111.59	111.59
<b>Date</b>	18-Jun-07	02-Jan-07	11-Jan-07	15-Jun-07	18-Jun-07	18-Jun-07

### EQUITY TURNOVER (OL, IEX)

	2007 €m	2006 €m	2005 €m	2004* €m	2003* €m
January	13,678.54	12,410.74	8,224.49	7,636.91	5,919.32
February	14,776.86	9,785.39	9,118.40	6,784.62	4,913.45
March	19,330.86	11,070.99	9,478.35	7,523.99	5,315.49
April	14,875.26	9,110.86	8,653.38	5,289.79	6,232.86
May	18,441.59	12,738.21	7,960.54	5,103.29	6,961.37
June	20,310.44	10,438.36	11,245.54	5,154.99	8,571.90
July	17,896.71	9,057.02	9,185.34	5,422.37	6,937.57
August	16,683.66	8,950.86	7,836.53	4,390.14	5,701.88
September	16,910.43	10,496.70	8,855.33	6,609.90	7,940.95
October	15,295.33	12,160.90	8,389.20	5,802.23	7,619.53
November	19,173.99	13,412.20	10,565.34	7,194.71	6,186.30
December	11,192.45	9,329.12	9,138.40	5,595.49	5,215.02
<b>Total</b>	<b>198,566.12</b>	<b>128,961.33</b>	<b>108,650.84</b>	<b>72,508.43</b>	<b>77,515.64</b>
<b>Daily Average</b>	<b>781.76</b>	<b>509.73</b>	<b>427.76</b>	<b>286.59</b>	<b>306.39</b>

### ISEQ® 20 ETF TURNOVER

	2007 €m
January	39
February	28
March	75
April	21
May	47
June	84
July	59
August	98
September	27
October	40
November	51
December	38
<b>Total</b>	<b>607</b>
<b>Daily Average</b>	<b>2.39</b>

### IRISH GOVERNMENT BOND TURNOVER

	2007 €m	2007 Volume	2006 €m	2005 €m	2004 €m	2003 €m
January	2,104.02	2,048.03	3,491.46	5,210.98	5,591.63	3,875.28
February	2,124.49	2,085.06	2,500.53	4,371.41	18,062.57	9,768.11
March	2,952.53	2,859.65	3,796.90	4,596.73	6,096.67	7,703.85
April	4,032.00	3,925.72	3,271.95	4,704.68	5,938.71	5,400.33
May	2,792.37	2,744.81	4,429.95	3,634.58	5,921.89	5,376.02
June	3,558.75	3,553.30	2,448.57	4,487.05	5,654.11	6,305.52
July	3,736.02	7,410.67	2,760.87	2,479.34	3,901.09	8,444.69
August	2,978.21	2,948.61	2,011.49	2,741.41	3,646.14	5,481.79
September	3,043.38	3,008.27	2,190.87	5,033.06	3,064.44	7,003.36
October	7,511.57	7,485.00	3,101.67	6,080.41	3,370.82	6,007.58
November	7,556.47	7,440.90	4,477.08	4,690.65	4,962.59	4,254.73
December	5,963.79	5,907.92	2,975.43	3,266.46	6,121.98	4,839.60
<b>Total</b>	<b>51,993.60</b>	<b>51,417.94</b>	<b>37,456.77</b>	<b>51,296.76</b>	<b>72,332.64</b>	<b>74,460.86</b>
<b>Daily Average</b>	<b>204.70</b>	<b>202.43</b>	<b>148.05</b>	<b>201.96</b>	<b>285.90</b>	<b>294.31</b>

\* Note Equity Turnover figures for 2001 - 2004 include companies from the Developing Companies Market (DCM) and Exploration Securities Market (ESM). All eight companies previously quoted on the ESM and the DCM transferred to IEX on 12 April 2005.



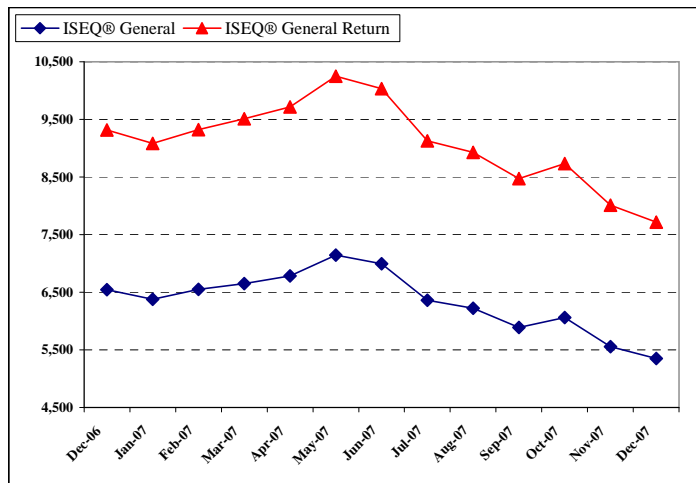
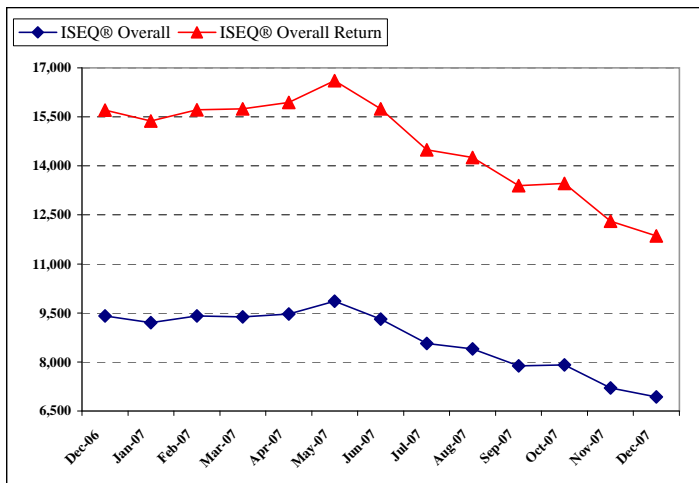
Irish Stock Exchange

# THE IRISH STOCK EXCHANGE

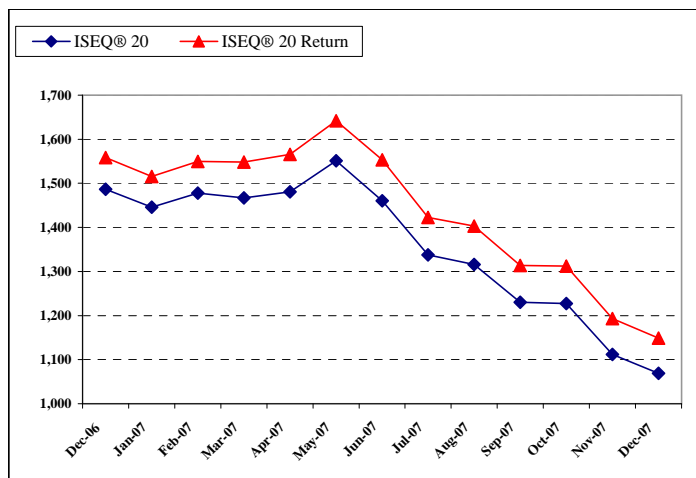
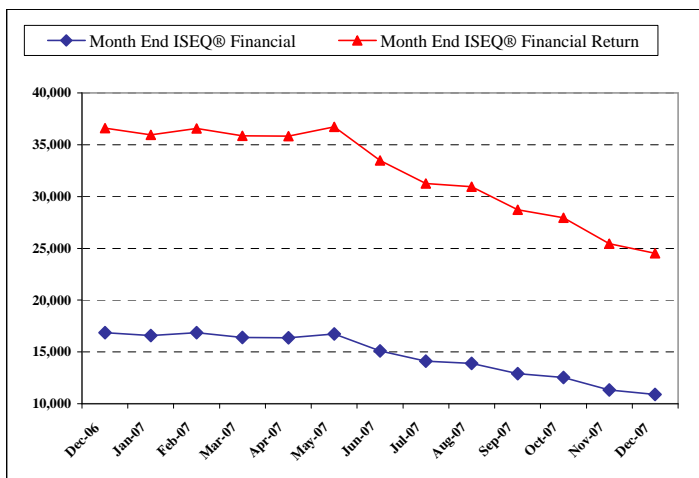
Annual Statistical Review 2007

## ISEQ® Equity Indices

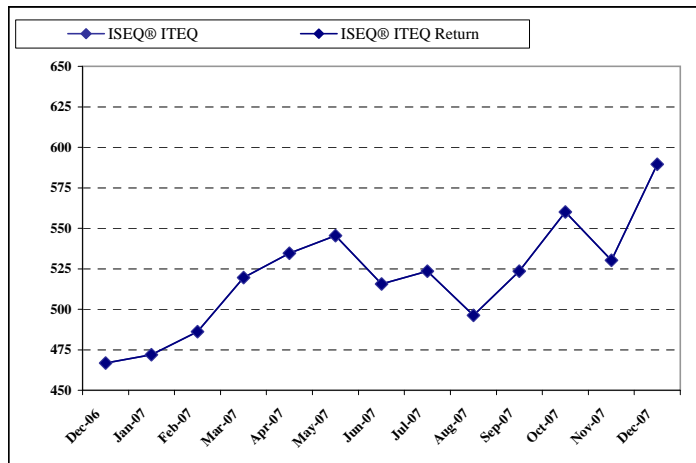
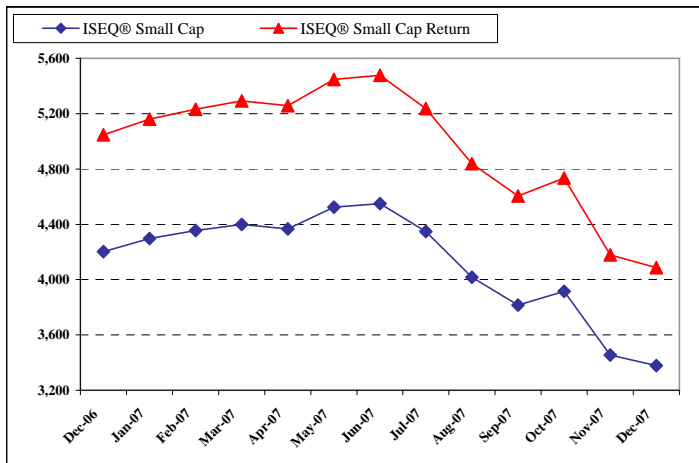
### ISEQ® OVERALL & GENERAL INDICES 2007



### ISEQ® FINANCIAL & ISEQ® 20 INDICES 2007



### ISEQ® SMALL CAP & ITEQ® INDICES 2007





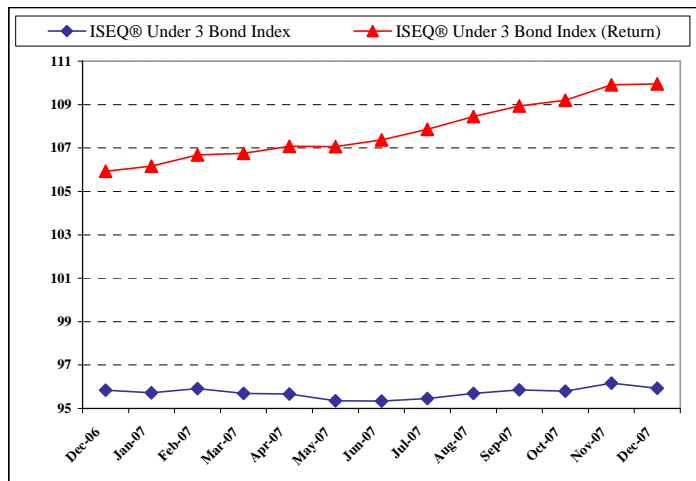
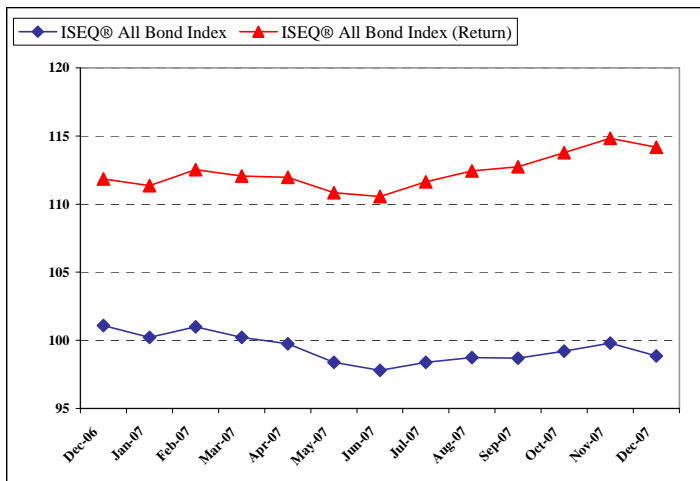
Irish Stock Exchange

# THE IRISH STOCK EXCHANGE

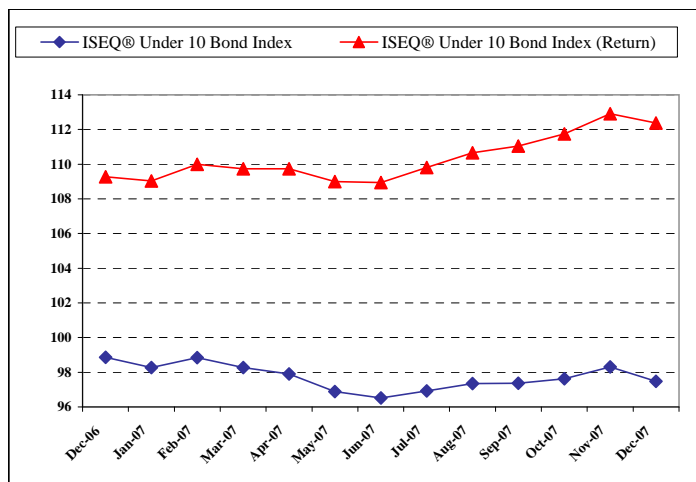
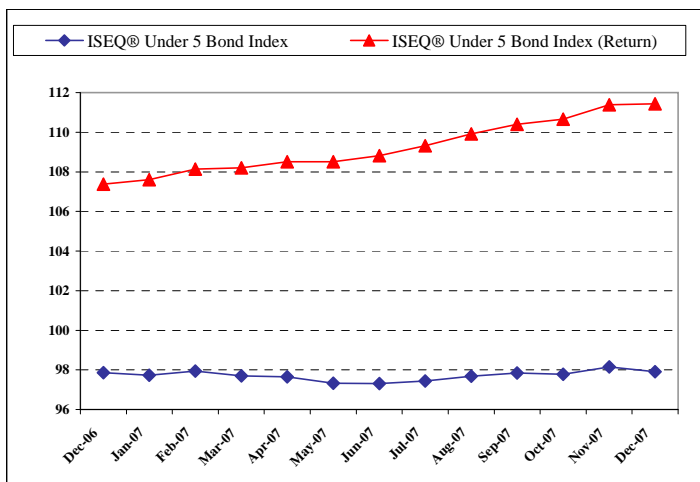
## Annual Statistical Review 2007

### ISEQ® Bond Indices

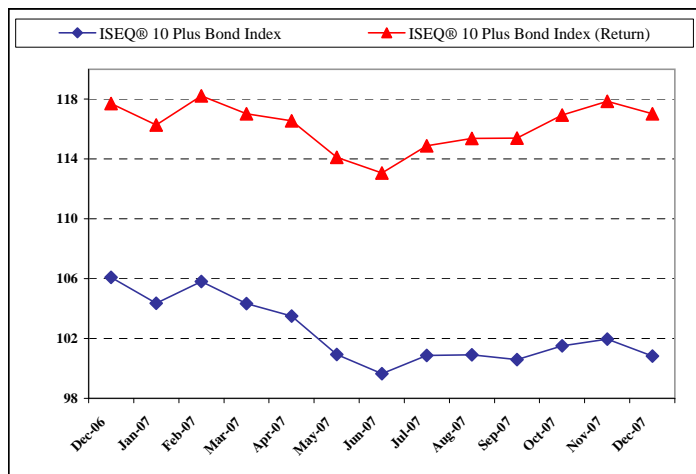
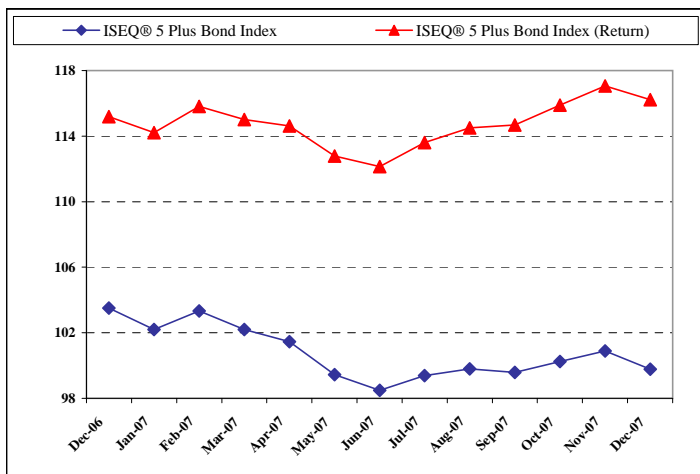
#### ISEQ® ALL BOND & UNDER 3 BOND INDICES 2007



#### ISEQ® UNDER 5 BOND & UNDER 10 BOND INDICES 2007



#### ISEQ® 5 PLUS & 10 PLUS BOND INDICES 2007



### INDIVIDUAL COMPANY DATA 2007

	Share Price (€) 31/12/2007	Share Price (€) 29/12/2006	Absolute Change 2007	% Change 2007	Market Cap. €m 31-Dec-07	Market Turnover €m 2007	Volume (m) 2007	ISEQ® Weighting 31-Dec-07	ISEQ® Beta 2007	ISEQ® Coef 250
<b>OFFICIAL LIST</b>										
Aer Lingus Group Plc	2.090	2.740	-0.650	-24%	1,110.85	821.58	319.43	0.40		0.49
Allied Irish Banks Plc NCP F	20.300	17.750	2.550	14%	5,075.00	2.40	0.12	-		-
Allied Irish Banks Plc	15.671	22.500	-6.829	-30%	13,800.45	31,325.87	1,628.48	16.54		1.25
Aminex Plc <i>Note 4</i>	0.340	0.325	0.015	5%	82.31	3.02	9.48	0.07		0.21
Anglo Irish Bank Corp Plc	10.940	15.710	-4.770	-30%	8,327.74	29,081.41	2,122.10	9.73		1.30
BOI NC. Euro Pref Stock	25.000	25.000	0.000	0%	75.66	-	-	-		-
BOI NCP STKSRS A STG1&STG9 LIQ	11.270	21.880	-10.610	-48%	21.14	0.60	0.05	-		-
Bank of Ireland	10.192	17.500	-7.308	-42%	10,097.07	22,953.60	1,657.02	11.99		1.24
CRH Plc 5PCum Pref	1.050	1.050	0.000	0%	0.05	-	-	-		-
CRH Plc 7PC'A' Cum Pref	1.080	1.180	-0.100	-8%	0.94	0.00	0.00	-		-
CRH Plc Ord	23.850	31.540	-7.690	-24%	13,034.97	28,262.70	920.56	15.55		1.09
C&C Group Plc	4.100	13.450	-9.350	-70%	1,303.89	13,069.18	1,548.41	1.52		0.47
Datalax Plc	0.650	0.770	-0.120	-16%	45.32	34.60	40.97	0.03		0.24
DCC Plc	19.272	25.750	-6.478	-25%	1,552.76	3,278.94	148.10	1.80		0.56
Diageo Plc	14.420	14.420	0.000	0%	37,407.94	-	-	-		-
Dragon Oil Plc	4.750	2.540	2.210	87%	2,427.79	149.97	46.66	1.38		0.63
Elan Corporation	14.792	10.750	4.042	38%	6,950.87	2,277.67	167.29	8.32		0.88
FBD Holdings Plc	25.250	41.300	-16.050	-39%	838.92	1,984.10	62.86	0.65		0.63
Gartmore Irish Plc	13.850	12.500	1.350	11%	185.75	0.03	0.00	-		-
Glanbia Plc ORD Eo 0.06	4.640	2.960	1.680	57%	1,360.63	630.20	158.15	0.73		0.22
Grafton Group Plc Units	5.400	12.660	-7.260	-57%	1,251.74	6,256.29	664.28	1.34		0.95
Greencore Grp Plc	4.480	4.680	-0.200	-4%	894.92	1,607.81	344.82	0.76		0.13
Horizon Tech Grp Ord EO 0.07	0.740	1.050	-0.310	-30%	60.92	29.50	30.83	0.04		0.03
LAWS Grp Plc	15.050	19.400	-4.350	-22%	1,909.98	4,161.91	254.59	2.25		0.52
Icon Plc	44.700	28.950	15.750	54%	1,284.18	33.92	0.97	1.39		0.21
IFG Grp Plc	1.625	2.100	-0.475	-23%	113.21	154.40	74.32	0.07		0.69
Independent News & Media Plc	2.369	3.000	-0.631	-21%	1,870.15	4,271.59	1,403.19	1.39		0.84
Iona Technologies Plc	2.500	3.850	-1.350	-35%	90.04	7.58	2.10	0.10		0.38
Irish Contin. Grp Units	22.050	13.900	8.150	59%	537.64	1,532.04	72.12	0.19		0.31
IL&P Plc ORD Eo 0.32	11.810	20.900	-9.090	-43%	3,256.91	10,173.70	579.03	3.83		1.30
ISEQ Exchange Traded Fund	13.390	18.740	-5.350	-29%	68.29	607.72	35.85	-		-
Kenmare Resources Plc	0.740	0.660	0.080	12%	513.97	52.19	73.16	0.59		0.53
Kenmare Res Warrants	0.480	0.380	0.100	26%	37.28	0.32	0.62	-		-
Kerry Grp Plc	21.700	18.930	2.770	15%	3,782.76	4,244.49	206.31	3.43		0.38
Kingspan Grp Plc	10.350	20.070	-9.720	-48%	1,774.27	6,652.54	382.22	1.58		1.12
McInerney Holdings Plc <i>Note 2</i>	1.390	4.570	-3.180	-70%	280.85	717.71	234.05	0.30		0.83
Mosney Irish Holidays 5.5PCCF	0.950	0.950	0.000	0%	0.19	-	-	-		-
Oglesby & Butler Plc	0.190	0.210	-0.020	-10%	2.34	0.13	0.66	-		0.17
Paddy Power Plc	22.510	15.050	7.460	50%	1,107.47	2,619.19	120.57	1.14		0.57
Qualceram Shires Plc	0.950	2.200	-1.250	-57%	21.06	14.03	7.74	0.01		0.25
Readymix Plc	1.600	2.600	-1.000	-38%	175.43	47.05	20.08	0.08		0.30
Real Estate Opportunities Ltd	1.350	1.350	0.000	0%	450.58	-	-	-		-
Real Estate Opport. Zero Pref	1.580	1.580	0.000	0%	91.25	-	-	-		-
Ryanair Holdings Plc	4.630	10.440	-5.810	-56%	6,960.55	12,485.97	2,120.20	7.86		1.06
Smurfit Kappa Group Plc	11.193	-	11.193	-	2,439.75	5,337.20	317.65	1.56		0.59
Tesco Plc	4.140	4.140	0.000	0%	30,843.51	-	-	-		-
Tullow Oil Plc	8.870	6.040	2.830	47%	6,382.09	157.66	24.64	-		-
United Drug	3.950	3.970	-0.020	-1%	899.59	871.49	225.37	1.06		0.47
UTV Media Plc	3.500	5.190	-1.690	-33%	191.81	2.41	0.54	0.20		0.02
Vislink Plc	0.770	1.430	-0.660	-46%	106.67	0.19	0.17	-		-
Waterford Wedgwood Ord Eo 0.06 <i>Note 3</i>	0.020	0.610	-0.590	-97%	107.09	112.20	2,434.56	0.06		0.55

### Irish Enterprise Exchange

Abbey Plc	6.000	10.750	4.750	44%	173.82	142.82	15.11	0.14		0.35
AGI Therapeutics Plc	1.505	1.980	0.475	24%	101.46	45.67	27.12	0.07		0.07
Amarin Corporation Plc	0.218	1.590	1.372	86%	30.16	14.68	16.28	-		-
Andor Technology Plc	0.920	-	-	-	24.66	0.43	0.33	0.02		0.22
Boundary Capital Plc	0.560	-	-	-	29.90	30.05	34.08	0.02		0.25
Blackrock Intl Land Plc	0.330	0.520	0.190	37%	192.48	375.09	761.33	0.10		0.76
CPL Resources Plc	4.800	6.000	1.200	20%	178.56	477.94	70.69	0.13		0.62
Donegal Creameries Plc	6.300	4.700	-1.600	-34%	64.80	35.13	5.36	0.07		0.08
Finance Ireland Plc <i>Note 6</i>	0.270	0.230	-0.090	-39%	4.97	1.01	7.14	-		0.13
First Derivatives Plc	3.930	-	-	0%	51.61	1.57	0.40	0.01		0.19
Fyffes Plc <i>Note 1</i>	0.940	1.390	-0.450	-32%	330.07	758.35	754.74	0.35		0.49
Getmobile Europe Plc	0.140	0.190	0.050	26%	13.23	5.92	38.01	-		-
Glencar Mining Plc	0.101	0.163	0.062	38%	26.10	8.33	56.60	0.03		0.30
Lapp Plats Plc	0.240	0.240	-	0%	5.34	-	-	-		-
Merrion Pharmaceuticals Plc	4.400	-	-	-	72.97	0.04	0.01	-		0.01
Newcourt Group Plc	1.130	1.750	0.620	35%	101.73	183.03	116.85	0.09		0.38
Norkom Group Plc	1.880	2.050	0.170	8%	167.83	52.34	28.31	0.09		0.34
Origin Enterprises Plc	3.800	-	-	-	505.46	255.32	69.07	0.15		0.19
Ormonde Mining Plc	0.150	0.230	0.080	35%	29.65	19.12	115.37	0.03		0.50
Ovoca Gold Plc	0.200	0.170	-0.030	-18%	86.09	5.15	30.07	0.06		0.07
Petroceltic International Plc	0.120	0.240	0.120	50%	88.48	7.28	38.84	0.10		0.47
Petronaft Resources Plc	0.460	0.720	0.260	36%	88.30	60.86	87.36	0.05		0.45
Prime Active Capital Plc <i>Note 5</i>	0.860	0.594	0.266	45%	19.51	8.05	7.39	0.02		0.61
Providence Resources Plc	0.086	0.082	-0.004	-5%	206.57	51.65	569.86	0.15		0.51
Siteserv Plc	0.330	1.100	0.770	70%	36.51	75.03	91.03	0.03		0.90
Thirdforce Plc	0.160	0.250	0.090	36%	40.66	30.64	157.42	0.03		0.48
Total Produce Plc	0.590	-	-	-	207.07	449.12	605.13	0.22		0.52
TVC Holding Plc	1.220	-	-	-	123.36	8.98	7.77	0.04		0.31
Veris Plc	1.800	4.750	2.950	62%	46.45	72.06	20.25	0.04		0.18
Zamano Plc	0.43	34.75	-	0%	35	11.97	26.83	0.03		0.18

**Note 1:** Fyffe's Plc price (29th Dec 2006) has been adjusted to reflect the de-merger of Total Produce on the 2nd January 2007.

**Note 2:** McInerney Plc price (29th Dec 2006) has been adjusted to reflect a rights issue of 1 new ordinary share for every 5 existing ordinary shares held on the 27th February 2007 and a subdivision of shares into 5 shares for every 1 existing on the 18th May.

**Note 3:** Waterford Wedgwood Plc price (29th Dec 2006) has been adjusted to reflect an Entitlement Issue of 1 Preference Share with 57 Warrants attached for every 535 existing Stock Units held on the 31st May 2007

**Note 4:** Aminex Plc price (29th Dec 2006) has been adjusted to reflect a rights issue of 1 new ordinary share for every 6 existing ordinary shares held on the 21st June 2007.

**Note 5:** Prime Active Plc price (29th Dec 2006) has been adjusted to reflect a share consolidation of 1 new ordinary share for every 5 existing ordinary shares held on the 6th Aug 2007.

**Note 6:** Finance Ireland price (29th Dec 2006) has been adjusted to reflect a share consolidation of 1 new ordinary share for every 5 existing ordinary shares held on the 27th Sept 2007

**The Irish Stock Exchange,  
28 Anglesea Street,  
Dublin 2.**

**Tel : +353 1 6174200  
Fax : +353 1 6776045**

**E - Mail : info@ise.ie  
Web Address : www.ise.ie**