



Irish Stock Exchange

# THE IRISH STOCK EXCHANGE

## Annual Statistical Review 2004

SUMMARY OF KEY STATISTICS	2004	2003	2002	2001	2000
<b>MARKET CAPITALISATION</b>	€m	€m	€m	€m	€m
Irish Government Bonds	33,031	29,557	21,869	18,812	20,750
Official List - Included in ISEQ	80,868	62,548	52,234	78,633	79,851
- Not Included in ISEQ	96,946	95,056	114,159	110,318	113,816
ITEQ (See Note 1)	691	840	834	1,938	3,664
Exploration Securities Market	130	125	24	144	499
Developing Companies Market	361	49	41	34	95
<b>NUMBER OF COMPANIES (Domestic &amp; Foreign)</b>					
Official List	53	54	59	67	76
ITEQ (See Note 1)	5	5	8	8	7
Exploration Securities Market	5	5	5	8	9
Developing Companies Market	2	2	4	4	4
Total	65	66	76	87	96
<b>MONEY RAISED (Domestic)</b>	€m	€m	€m	€m	€m
Net Irish Government Bond Issues / (Redemptions)	2,837	6,570	6,600	(2,106)	(1,983)
Equity Issues : (See Note 2)					
Official List	2543	721	1,635	4,239	5,192
ITEQ (See Note 1)	0	0	0	213	656
Exploration Securities Market	47	26	1	41	30
Developing Companies Market	0.1	2	0	1	1
No. Companies Raising Funds	39	35	35	57	48
<b>TURNOVER</b>	€m	€m	€m	€m	€m
Irish Government Bonds	72,333	74,461	93,470	43,590	44,903
Official List (incl Grey Mkt), ITEQ, ESM & DCM	72,508	77,516	70,255	51,042	31,463
<b>ISEQ OVERALL INDEX</b>					
ISEQ Overall Index	6,197.83	4,920.73	3,995.03	5,707.00	5,722.53
% Change (on year)	26%	23.17%	-30.00%	-0.27%	14.05%
ISEQ Overall Total Return Index	9,879.38	7,652.33	6,034.08	8,426.72	8,297.10

### ENTRANTS, TRANSFERS AND DEPARTURES

<b>NEW COMPANIES ENTERING THE MARKETS</b>	2	0	0	2	3
<b>ENTRANTS TO MARKETS</b>	<i>Market</i>				
Eircom Group PLC	OL		19-Mar-04		
C & C Group PLC	OL		14-May-04		
<b>DEPARTURES FROM MARKETS</b>	<i>Company</i>	<i>Departure From</i>	<i>Date</i>		
First Active PLC		OL	06-Jan-04		
Barlo Group PLC		OL	15-Jun-04		
Gresham Hotel Group PLC		OL	09-Aug-04		
<b>TRANSFERS BETWEEN MARKETS</b>	<i>Company</i>	<i>Departure From</i>	<i>Entry to</i>	<i>Date</i>	
Abbey PLC		OL	DCM	16-Nov-04	
<b>NEW FUNDS / SPECIALIST SECURITIES ENTERING THE MARKETS</b>					
Investment Funds & UCITS (Including Umbrella Funds)	426	284	359	317	207
- Sub Funds	563	390	494	400	318
- Fund Classes	3,268	2304	1979	1459	930
Specialist Securities - Asset Backed, Bonds, Other	406	305	376	239	91
of which are Programmes	59	61	n/a	n/a	n/a
- Tranches	2,719	1645	1160	645	270

**Note 1 :** ITEQ, the Irish Stock Exchange's specialist technology market, commenced on 8 September 2000. ITEQ companies are also listed on the Official List. ITEQ figures are not included in Official List totals.

**Note 2 :** Money raised figures includes all domestic companies and companies who have their centre of economic interest in Ireland.

### ISEQ INDICES 2004

Month End	Overall Mkt. Cap.* €m	ISEQ Overall	ISEQ Financial	ISEQ General	ISEQ Small Cap	ITEQ
31-Dec-03	63,437	4,920.73	9,234.83	3,286.98	1,659.13	362.69
30-Jan-04	64,956	5,103	9,799.38	3,338.85	1,790.56	367.02
27-Feb-04	64,781	5,092	9,162.11	3,525.95	1,783.20	336.24
31-Mar-04	67,101	5,177	8,981.50	3,689.12	1,798.72	355.25
30-Apr-04	68,997	5,322	8,977.36	3,870.46	1,835.84	348.55
31-May-04	68,526	5,226	8,791.22	3,807.06	1,778.22	322.06
30-Jun-04	71,736	5,466	9,313.13	3,947.01	1,879.99	335.66
30-Jul-04	70,408	5,359	9,291.84	3,820.15	1,836.42	283.05
31-Aug-04	71,687	5,451	9,495.15	3,872.35	1,854.63	309.00
30-Sep-04	73,817	5,610	9,738.36	3,996.52	1,899.45	277.25
29-Oct-04	74,841	5,682	9,794.74	4,068.06	1,905.81	260.01
30-Nov-04	78,718	5,974	10,479.71	4,222.06	2,055.08	300.23
31-Dec-04	81,822	6,198	11,043.95	4,328.52	2,100.96	294.82
<b>High 2004</b>		6,213.61	11,070.81	4,403.11	2,107.05	404.37
<b>Date</b>		31-Dec-04	31-Dec-04	16-Nov-04	30-Dec-04	14-Apr-04
<b>Low 2004</b>		4,912.06	8,516.13	3,282.95	1,655.03	257.32
<b>Date</b>		02-Jan-04	17-May-04	02-Jan-04	02-Jan-04	28-Oct-04

### ISEQ TOTAL RETURN INDICES 2004

Month End	Return Overall	Return Financial	Return General	Return Small Cap	ITEQ
31-Dec-03	7,652.33	18,109.48	4,466.64	1,898.72	362.69
30-Jan-04	7,938.78	19,216.55	4,539.64	2,050.93	367.02
27-Feb-04	7,923.41	17,966.85	4,796.59	2,042.60	336.24
31-Mar-04	8,113.14	17,802.96	5,039.63	2,070.39	355.25
30-Apr-04	8,355.99	17,853.04	5,292.51	2,117.44	348.55
31-May-04	8,216.43	17,499.29	5,214.96	2,054.86	322.06
30-Jun-04	8,629.01	18,704.71	5,408.64	2,176.09	335.66
30-Jul-04	8,460.93	18,662.81	5,236.44	2,127.72	283.05
31-Aug-04	8,633.99	19,186.68	5,314.28	2,148.83	309
30-Sep-04	8,901.34	19,681.60	5,499.28	2,210.47	277.25
29-Oct-04	9,024.10	19,823.66	5,601.74	2,222.78	260.01
30-Nov-04	9,489.32	21,210.38	5,815.34	2,397.16	300.23
31-Dec-04	9,879.38	22,495.14	5,969.77	2,455.91	294.82
<b>High 2004</b>	9,901.17	22,495.14	6,055.25	2,458.21	397.82
<b>Date</b>	30-Dec-04	31-Dec-04	15-Nov-04	30-Dec-04	13-Apr-04
<b>Low 2004</b>	7,733.10	17,170.37	4,509.86	1,926.13	258.99
<b>Date</b>	02-Jan-04	28-May-04	02-Jan-04	02-Jan-04	27-Oct-04

\* Market Capitalisation = Official List + Developing Companies Market +ITEQ equities included in the ISEQ Index.

### EQUITY TURNOVER (OL, ESM, DCM, ITEQ)

	2004 €m	2003 €m	2002 €m	2001 €m	2000 €m
January	7,636.91	5,919.32	5,128.73	3,893.79	2,331.82
February	6,784.62	4,913.45	5,543.92	3,906.40	2,885.77
March	7,523.99	5,315.49	4,690.92	5,030.36	3,013.69
April	5,289.79	6,232.86	4,816.40	3,401.54	2,156.90
May	5,103.29	6,961.37	6,293.52	4,350.34	2,407.38
June	5,154.99	8,571.90	6,832.66	5,003.40	2,202.10
July	5,422.37	6,937.57	8,385.87	4,063.61	1,763.07
August	4,390.14	5,701.88	5,434.82	4,153.26	2,168.29
September	6,609.90	7,940.95	5,341.49	5,015.21	3,190.25
October	5,802.23	7,619.53	7,402.03	4,375.26	2,514.84
November	7,194.71	6,186.30	5,554.26	4,511.27	4,340.55
December	5,595.49	5,215.02	4,830.26	3,337.11	2,488.42
<b>Total</b>	<b>72,508.43</b>	<b>77,515.64</b>	<b>70,254.89</b>	<b>51,041.55</b>	<b>31,463.06</b>
<b>Daily Average</b>	<b>285.47</b>	<b>306.39</b>	<b>277.69</b>	<b>201.75</b>	<b>125.85</b>

### IRISH GOVERNMENT BOND TURNOVER

	2004 €m	2004 Volume	2003 €m	2002 €m	2001 €m	2000 €m
January	5591.63	5531.32	3,875.28	36,202.59	5,133.83	3,151.91
February	18062.57	17623.68	9,768.11	6,985.07	3,854.54	2,694.95
March	6096.67	5950.22	7,703.85	5,348.42	4,212.00	3,725.98
April	5938.71	5905.02	5,400.33	5,050.53	3,615.59	3,610.90
May	5921.89	5959.55	5,376.02	4,345.98	2,872.26	4,786.35
June	5654.11	5652.39	6,305.52	3,899.20	3,217.55	3,532.67
July	3901.09	3851.79	8,444.69	6,518.61	2,749.37	5,494.31
August	3646.14	3549.21	5,481.79	4,603.95	2,979.41	3,141.52
September	3064.44	2978	7,003.36	6,127.40	3,914.18	4,474.22
October	3370.82	3249.47	6,007.58	6,132.06	5,785.60	4,101.22
November	4962.59	4737.72	4,254.73	4,816.34	3,470.40	3,630.41
December	6121.98	5698.41	4,839.60	3,439.49	1,785.16	2,558.78
<b>Total</b>	<b>72,332.64</b>	<b>70,686.78</b>	<b>74,460.86</b>	<b>93,469.63</b>	<b>43,589.89</b>	<b>44,903.22</b>
<b>Daily Average</b>	<b>284.77</b>	<b>278.29</b>	<b>294.31</b>	<b>369.45</b>	<b>172.29</b>	<b>179.61</b>

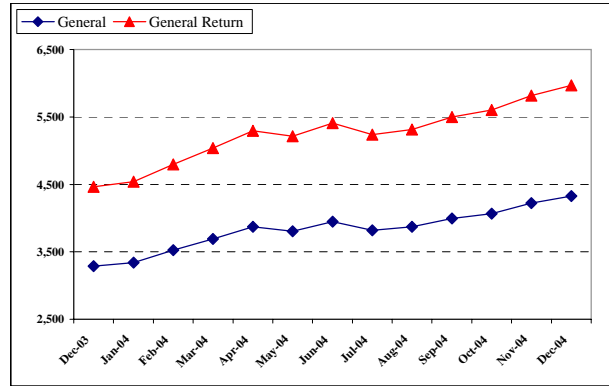
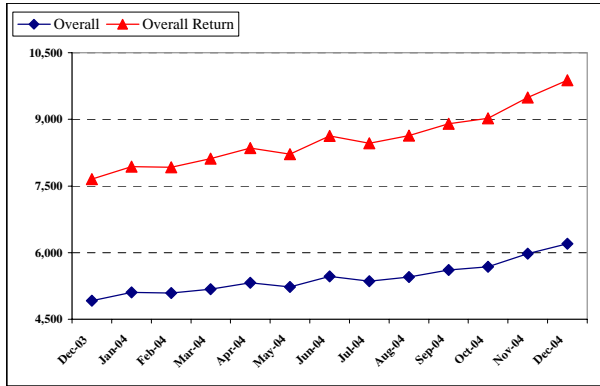
### MONEY RAISED (EQUITIES)

	2004 €m	2003 €m	2002 €m	2001 €m	2000 €m
<b>Domestic</b>					
Money Raised	2591	749	1,635	4,494	5,878
No. of Companies					
Raising Funds	39	35	35	57	48

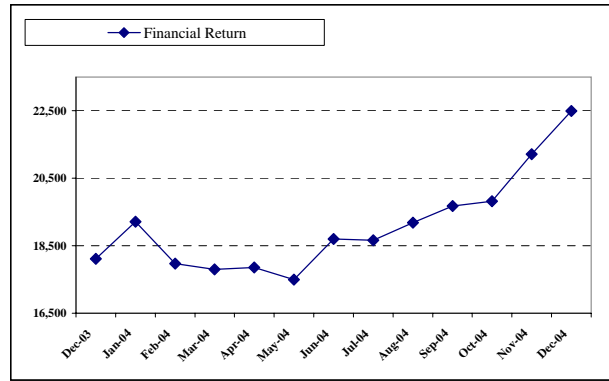
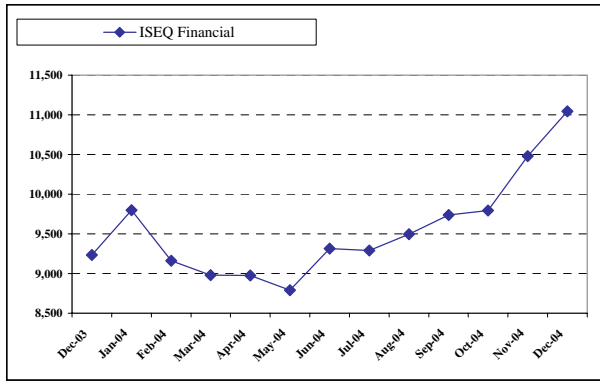
### NUMBER OF FUNDS / SPECIALIST SECURITIES 31 DECEMBER 2004

	Funds	Sub-Funds	Fund-Classes
<b>Number of Investment Funds</b>	1,804	2,249	7,816
<b>Newly Listed 2004</b>	426	563	3,268
<b>Specialist Security Programmes</b>		<b>Specialist Security Issuers</b>	<b>Specialist Security Tranches</b>
<b>Number of Specialist Securities</b>	162	1054	6,142
<b>Newly Listed 2004</b>	59	347	2,719

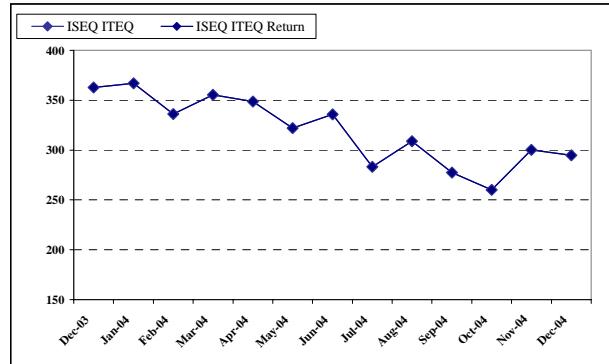
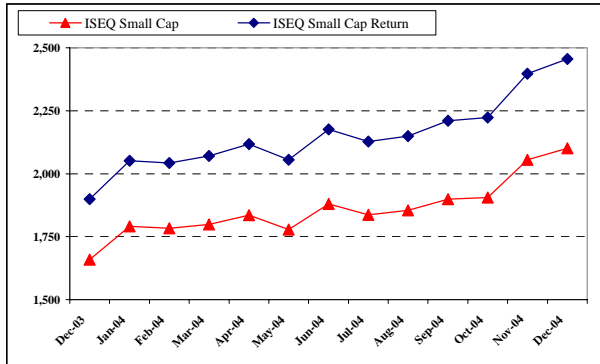
### ISEQ® OVERALL & GENERAL INDICES 2004



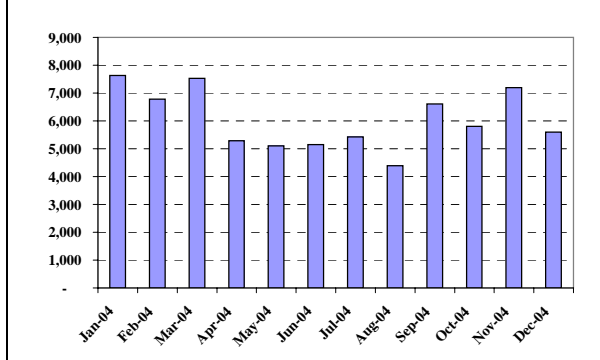
### ISEQ® FINANCIAL INDICES 2004



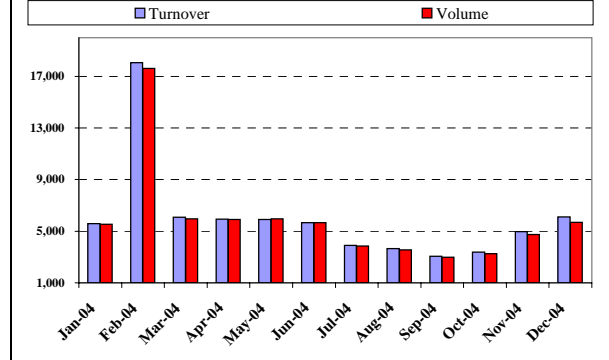
### ISEQ® SMALL CAP & ITEQ® INDICES 2004



### EQUITY TURNOVER (€m) 2004



### IRISH GOVERNMENT BOND TURNOVER (€m) 2004



### INDIVIDUAL COMPANY DATA 2004

<u>OFFICIAL LIST</u>	Share Price (€) 31-Dec-04	Share Price (€) 31-Dec-03	Absolute Change 2004	% Change 2004	Market Cap. €m 31-Dec-04	Market Turnover €m 2004	Volume 2004	ISEQ Weighting 31-Dec-04	ISEQ Beta Coef 2004
Allied Irish Banks Plc	1,535	1270	265	21%	13,294	12356.94	949.04	16.15	1.00
Allied Irish Banks Plc NCP FI	2,680	2680	0	0%	6,700	3.36	0.24	0.00	0.00
Aminex Plc	16	30	-15	-48%	15	0.07	0.29	0.02	-0.62
Anglo Irish Bank Corp Plc	1,790	1251	539	43%	5,985	7791.25	555.72	7.32	0.90
AICF Ltd. EO Series B 7.75PCNC	2,525	2525	0	0%	162	1.01	0.04	0.00	0.00
AICF Limited A \$ FL rate NC	2,613	2613	0	0%	131	0.00	0.00	0.00	0.00
Aviva Plc	591	591	0	0%	13,458	0.00	0.00	0.00	0.00
Bank of Ireland	1,225	1082	143	13%	11,838	13186.23	1211.83	14.48	0.98
BOI NC. Euro Pref Stock	2,784	2450	334	14%	292	1.78	0.07	0.00	0.00
BOI NCP STKSRS A STG1&STG9 LIQ	3,033	2700	333	12%	152	45.49	1.66	0.00	0.00
CRH Plc Ord	1,970	1628	342	21%	10,461	10256.18	569.60	12.83	0.71
CRH Plc 5PCum Pref	105	58	47	81%	0	0.69	0.06	0.00	0.00
CRH Plc 7PCA' Cum Pref	105	110	-5	-5%	1	1.11	0.52	0.00	0.00
C&C Group Plc	296	0	0	0%	951	636.81	246.62	1.16	0.12
DCC Plc	1,650	1082	568	52%	1,321	1457.93	106.62	1.62	0.16
Diageo Plc	1,442	1442	0	0%	43,543	0.00	0.00	0.00	0.00
Donegal Creameries Plc	445	331	114	34%	45	32.56	7.53	0.05	0.08
Dragon Oil Plc	95	44	51	115%	382	54.60	89.56	0.47	0.55
Eircom Group Plc	173	0	0	0%	1,280	1442.81	948.29	1.57	0.07
Elan Corporation	1,960	546	1414	259%	7,653	2668.65	164.81	9.24	3.35
FBD Holdings Plc	1,925	1380	545	39%	807	255.17	15.39	0.99	-0.06
Fyffes Plc Ord	193	165	28	17%	669	1074.49	608.28	0.82	0.46
Gartmore Irish Plc	700	404	296	73%	135	0.00	0.00	0.00	0.00
Glanbia Plc ORD Eo 0.06	280	210	70	33%	819	268.72	107.43	1.00	0.27
Grafton Group Plc Units	800	547	253	46%	1,701	1306.13	196.32	2.08	0.63
Greencore Grp Plc	302	355	-53	-15%	579	768.85	247.63	0.71	0.30
Heiton Group Plc 6PCum Prf	127	127	0	0%	0	0.00	0.00	0.00	0.00
Heiton Group Plc Ord	700	410	290	71%	350	299.96	55.06	0.43	0.40
IWP International Plc Units	18	24	-6	-25%	13	16.10	67.36	0.02	-0.28
IWP INTL. PLC 12PCCP	19	115	-96	-83%	0	0.00	0.00	0.00	0.00
IAWS Grp Plc	1,220	970	250	26%	1,506	1250.13	124.63	1.84	0.21
IFG Grp Plc	78	100	-22	-22%	51	77.00	72.98	0.07	0.46
Independent News & Media Plc	232	188	44	23%	1,723	1472.52	714.00	2.09	0.53
Irish Contin. Grp units	1,155	1070	85	8%	266	251.57	22.90	0.32	0.51
IL&P Plc ORD Eo 0.32	1,380	1280	100	8%	3,719	3625.04	277.06	4.55	0.82
Jurys Doyle Hotel Grp Plc	1,232	970	262	27%	776	471.16	45.55	0.95	0.37
Kenmare Resources Plc	24	22	2	9%	155	15.19	59.36	0.19	0.32
Kerry Grp Plc	1,765	1490	275	18%	3,277	1883.97	114.48	4.02	0.32
Kingspan Grp Plc	705	420	285	68%	1,167	1246.25	241.55	1.43	0.46
McInerney Holdings Plc	660	470	190	40%	217	379.20	71.45	0.27	0.29
Mosney Irish Holidays 5.5PCCP	95	115	-20	-17%	0	0.00	0.00	0.00	0.00
Norish Plc	80	75	5	7%	7	0.98	1.27	0.01	-0.01
Oakhill Grp Plc	19	15	4	27%	11	3.74	20.91	0.01	-0.40
Oglesby & Butler Plc	25	25	0	0%	3	1.65	5.44	0.00	-0.12
Paddy Power Plc	1,085	715	370	52%	543	649.85	69.40	0.66	0.24
Qualceram Shires Plc	137	125	12	10%	30	30.78	16.07	0.04	-0.22
Readymix Plc	183	200	-17	-9%	199	70.56	40.92	0.24	0.29
Real Estate Opportunities Ltd	135	135	0	0%	266	0.00	0.00	0.00	0.00
Real Estate Opport. Zero Pref	158	158	0	0%	91	0.00	0.00	0.00	0.00
Ryanair Holdings Plc	525	659	-134	-20%	3,960	5487.77	1132.85	4.84	2.18
South Wharf Plc	190	72	118	164%	68	3.97	2.74	0.08	-0.22
Tesco Plc	414	414	0	0%	30,587	0.00	0.00	0.00	0.00
Tullow Oil Plc	214	121	93	77%	1,378	45.95	27.80	0.00	0.00
Ulster Television Plc	633	550	83	15%	339	1.59	0.25	0.41	0.00
Unidare Plc Units	300	127	173	136%	59	20.20	9.42	0.07	0.20
United Drug	348	230	118	51%	749	507.78	178.07	0.92	0.33
Viridian Grp Plc	1,051	795	256	32%	1,401	19.07	2.09	1.71	0.05
Vislink Plc	43	22	21	95%	44	0.02	0.04	0.00	0.00
Warner Chilcott Plc	1,228	1054	174	17%	2,249	129.41	11.96	2.75	0.35
Waterford Wedgwood Ord Eo 0.06	6	19	12	-67%	165	317.39	2008.91	0.20	0.22
<u>ITEQ MARKET</u>									
Datalec Plc	42	67	25	-37%	28	32.07	61.94	0.03	-0.02
Horizon Tech Grp ord EO 0.07	115	90	25	28%	85	27.78	28.17	0.10	0.08
Icon Plc	2,836	3325	489	-15%	367	1.59	0.05	0.45	-0.40
Iona Technologies Plc	370	430	60	-14%	127	19.25	4.65	0.16	1.06
Trinity Biotech Plc	215	411	196	-48%	84	1.61	0.56	0.10	0.19
<u>EXPLORATION SECURITIES MARKET</u>									
Glencar Mining Plc	4.6	6	2	-28%	8	3.49	50.45	0.00	0.00
Mimmet Plc	4.8	7	2	-31%	44	0.19	3.41	0.00	0.00
Ormonde Mining Plc	14.0	7	-7	92%	17	14.13	125.68	0.00	0.00
Ovoca Resources Plc	9.0	8	-1	13%	5	3.98	53.02	0.00	0.00
Providence Resources Plc	2.8	4	1	-28%	56	61.42	1374.74	0.00	0.00
<u>DEVELOPING COMPANIES MARKET</u>									
Abbey Plc	815	665	-150	23%	278	191.94	23.64	0.34	0.24
CPL Resources Plc	130	55	-75	136%	48	17.47	18.95	0.06	0.44
Thirdforce Plc	27	22	-5	23%	35	5.76	18.91	0.04	0.19

The Irish Stock Exchange  
28 Angelsea Street,

Dublin 2.

Tel : +353 1 6174200  
Fax : +353 1 6776045

E - Mail : [statistics@ise.ie](mailto:statistics@ise.ie)  
Web Address : [www.ise.ie](http://www.ise.ie)

**Note 1 :** Providence Resources PLC price (31 Dec 2003) has been adjusted to reflect a rights issue of 1 unit for every 57 shares. Units will comprise of 4 new ord shares at Eur 0.03 and 1 Warrant at Eur 0.045.

**Note 2 :** Kenmare Resources Plc price (31 Dec 2003) has been adjusted to reflect an entitlement issue of 13 new ord shares at Stg 16p per share for every 27 shares. Also Warrants issued on the basis of 1 warrant for every 4 new ord shares subscribed for.

**Note 3 :** Waterford Wedgwood Plc price (31 Dec 2003) has been adjusted to reflect a rights issue at Euro 0.06 per new unit on the basis of 5 New Stock Units for every 3 Units held.